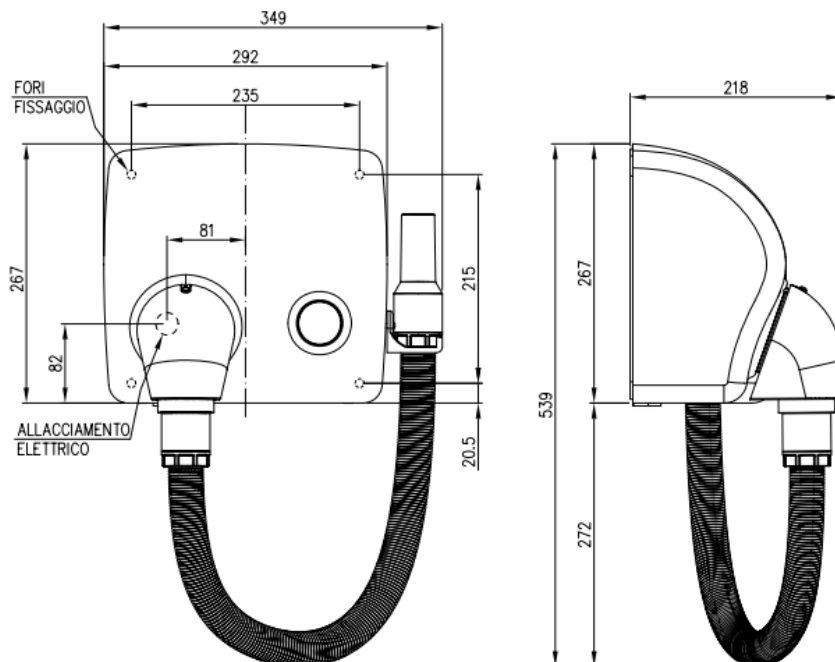


MG88HT HAIR

ELECTRIC HOT-AIR HAIR DRYER (push-button)



ASSORTMENT

MG88HT (b) LEM	Porcelain white	MG88HT (l) LEM	Polished
MG88HT (a) LEM	Porcelain anthracite	MG88HT (s) LEM	Satin

SPECIFICATION ITEM

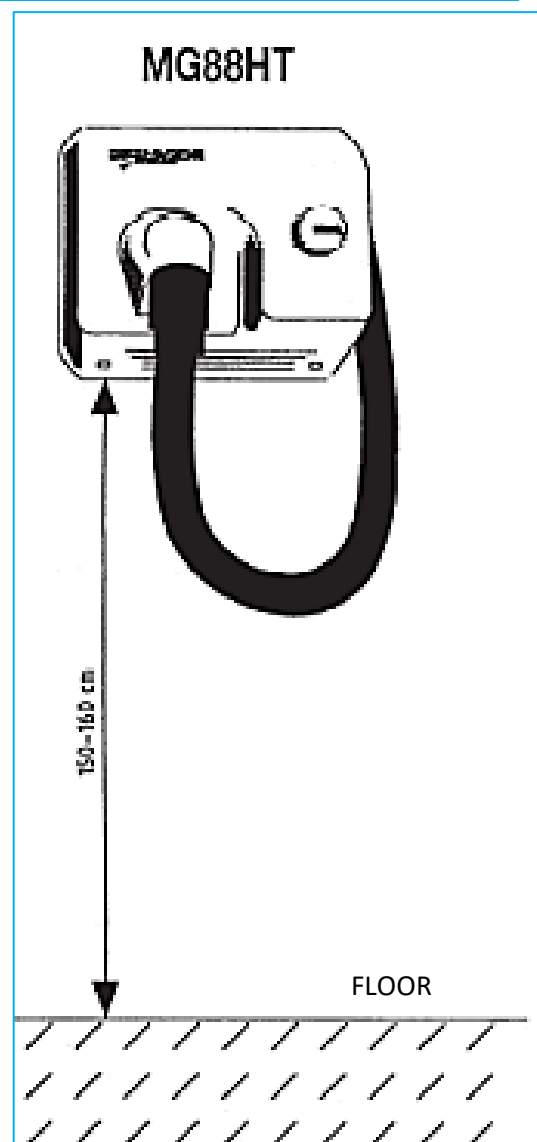
Compact, high-performance hot air electric hair dryer with activation by push-button, equipped with flexible hose with adjustable air nozzle (optional version with fixed nozzle) with skin-care system. Machine body with simple design for quick cleaning and anti-theft and anti-vandal execution in aluminium with AISI 304 stainless steel locking rods. Cover in carbon steel with anti-writer treatment for porcelain white and anthracite versions, or in AISI 304 stainless steel in polished or satin finish. High-performance and long-lasting motor unit with thermo-protector with automatic reset, with patented LEM system with quick-change fan unit. Anti-theft and safety locking system with special screws and bushings. Safety system with motor protection with locking function. Operating voltage: 220/240 V. Mains frequency: 50/60 Hz. Total power consumption: 1000 W. electrical insulation classes: Class II. Degree of protection against the intrusion of foreign bodies and against water: IP21 (IP23 in the optional version with fixed air nozzle). Enclosure made of Class V0 fireproof material. Combinable with single-channel and multi-channel token dispensers for the supply of service against payment.

MG88HT HAIR

ELECTRIC HOT-AIR HAIR DRYER (push-button)

TECHNICAL SPECIFICATIONS

	<i>MG88H LEM</i>
activation	push-button
lid material	stainless steel AISI 304 / carbon steel
surface treatment	polished / satin / porcelain
electrical insulation classes	class II
degrees of internal protection	IP21 (IP23 optional version with fixed air nozzle)
operating voltage	220/240V
mains frequency	50/60 Hz
motor power	250 W
resistance	750 W
total consumption	1000 W
air outlet speed	87.2 km/h
air flow rate	78 m ³ /h
average drying time	21''
air temperature at 15 cm	50.47°C
noise [at 1 mt]	76.2 dB
machine size (mm)	292x267x218
acceptance certificate	yes
weight	7530 gr



INSTALLATION

Wall-mounting by means of the provided kit.

CLEANING

Clean with a damp cloth. Use neutral, non-abrasive, solvent-free cleaning agents.

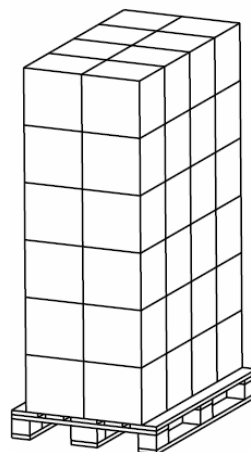
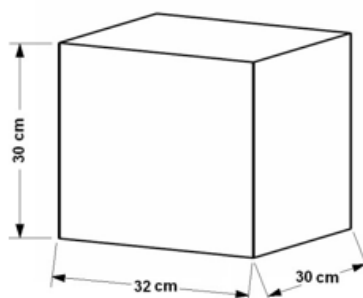
SINGLE CARDBOARD BOX PACKAGING

Weight 8,43 kg

PACKAGING ON PALLETS

Size: 80x120 H=195 cm

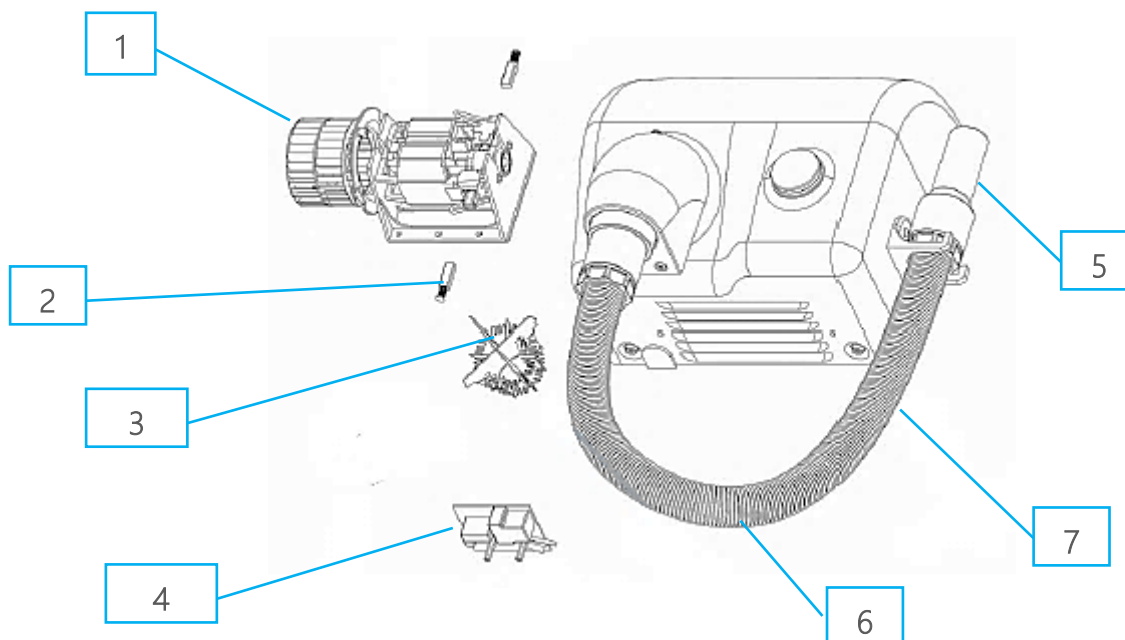
n.48 pieces per pallet, weight: kg 425.



MG88HT HAIR

ELECTRIC HOT-AIR HAIR DRYER (push-button)

RECOMMENDED SPARE PARTS



1	MGR253	LEM kit electric motor 230V 250W
2	MGR174A	Pair of electric motor brushes
3	MGR121P1Ht	Electrical resistance 750W
4	MGR226AH	90-second electroic timer
5	MGR171	Air outlet connector
6	MGR163	Pipe with fittings
7	MGR163S	Pipe without fittings
8	MGR145	Spiral-shaped LEM

PACKAGING AND EQUIPMENT

N°1	Main unit (DRYER)
N°4	Plastic plugs for wall mounting
N°4	Steel screws for wall mounting
N°1	Special spanner for lid removal/installation
N°1	Cable gland M20
N°1	Instruction manual with individual acceptance certificate



WARNINGS FOR THE CORRECT DISPOSAL OF THE PRODUCT IN ACCORDANCE WITH EUROPEAN DIRECTIVE 2002/96/EC.

At the end of its useful life, the product must not be disposed of with municipal waste. It can be handed in at the special separate collection centres set up by municipal authorities, or at retailers who provide this service. Disposing of a household appliance separately avoids possible negative consequences for the environment and health resulting from its inappropriate disposal and allows the materials from which it is made to be recovered in order to achieve significant savings in energy and resources.