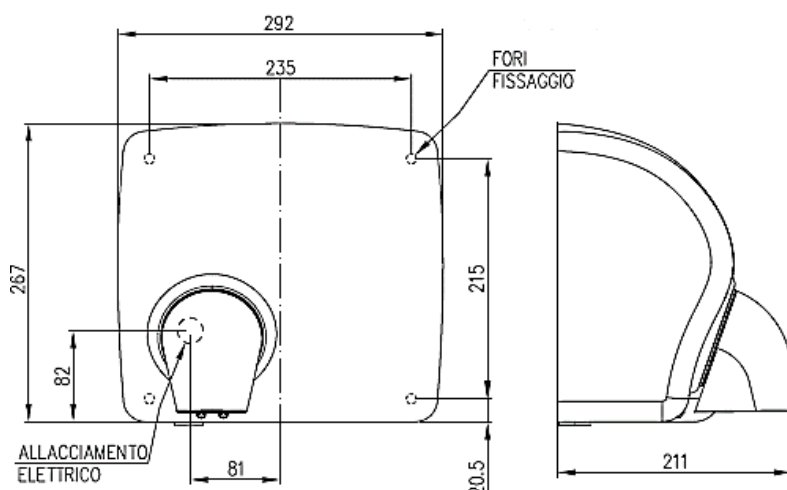


# MG88A 250UVC

## ELECTRIC HOT-AIR HAND DRYER WITH UVC LAMP



## ASSORTMENT

MG88A (b) 250 UVC	Porcelain white
MG88A (l) 250 UVC	Polished
MG88A (s) 250 UVC	Satin

### SPECIFICATION ITEM

Professional electric hot-air hand dryer with high performance and small size, equipped with special UVC lamp for bacterial load abatement. Available in automatic version, with activation by photocell (model MG88A 250 UVC). Equipped with adjustable air nozzle (optional version with fixed nozzle). Machine body with simple design for rapid cleaning and anti-theft and anti-vandal execution in aluminium with AISI 304 stainless steel locking rods. Cover in carbon steel with anti-writer treatment for the porcelain white version, or in AISI 304 stainless steel in polished or satin finish. High-performance, long-lasting motor unit with thermo-protector with automatic reset, with patented LEM system for easy and quick maintenance. Average drying time: 21". Anti-theft and security locking system with special screws and bushings. Safety system with motor protection with locking function. Operating voltage: 220/240 V. Mains frequency: 50/60 Hz. Total power consumption: 2250 W. Insulation class: Class I. Degree of protection against the intrusion of foreign bodies and against water: IP21 (IP23 in the optional version with fixed air nozzle). Enclosure made of Class V0 fireproof material. Maximum consumption per drying: 0.02 KW/h.

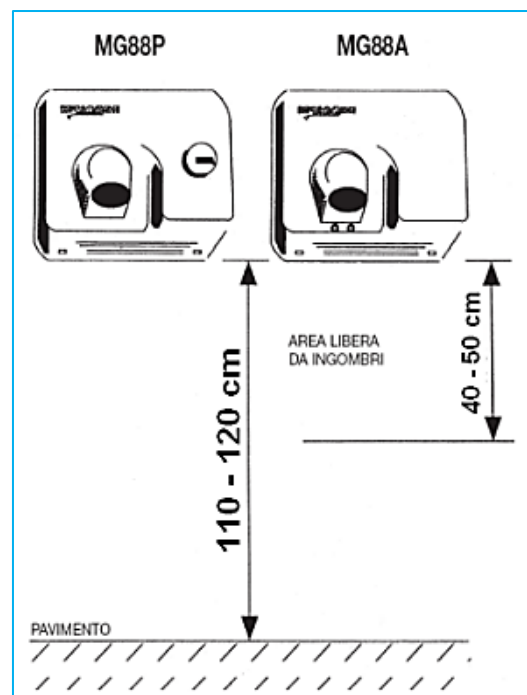
# MG88A 250UVC

## ELECTRIC HOT-AIR HAND DRYER WITH UVC LAMP

### TECHNICAL SPECIFICATIONS

#### MG88A 250 UVC

activation	photocell
lid material	stainless steel AISI 304 / carbon steel
surface treatment	polished / satin / porcelain
electrical insulation classes	class I
	IP21 (IP23 optional version with fixed air nozzle)
degrees of internal protection	
operating voltage	220/240V
mains frequency	50/60 Hz
motor power	250 W
resistance	2000 W
total consumption	2250 W
max consumption per drying	0.02 KW/h
adjustable air outlet speed	105 km/h
air flow rate	258 m <sup>3</sup> /h
average drying time	21"
noise [at 1 mt]	76.2 dB
machine size (mm)	292x267x211
acceptance certificate	yes
weight	gr.7220



### INSTALLATION

Wall-mounting by means of the provided kit.

### CLEANING

Clean with a damp cloth. Use neutral, non-abrasive, solvent-free cleaning agents.

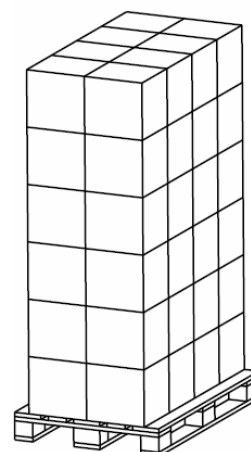
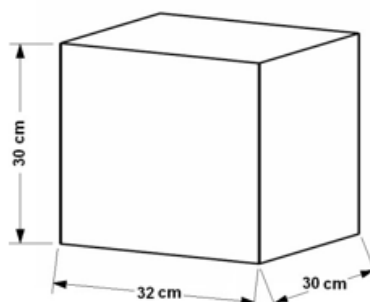
### SINGLE CARDBOARD BOX PACKAGING

weight 7.9 kg

### PACKAGING ON PALLETS

Size: 80x120 H=195 cm

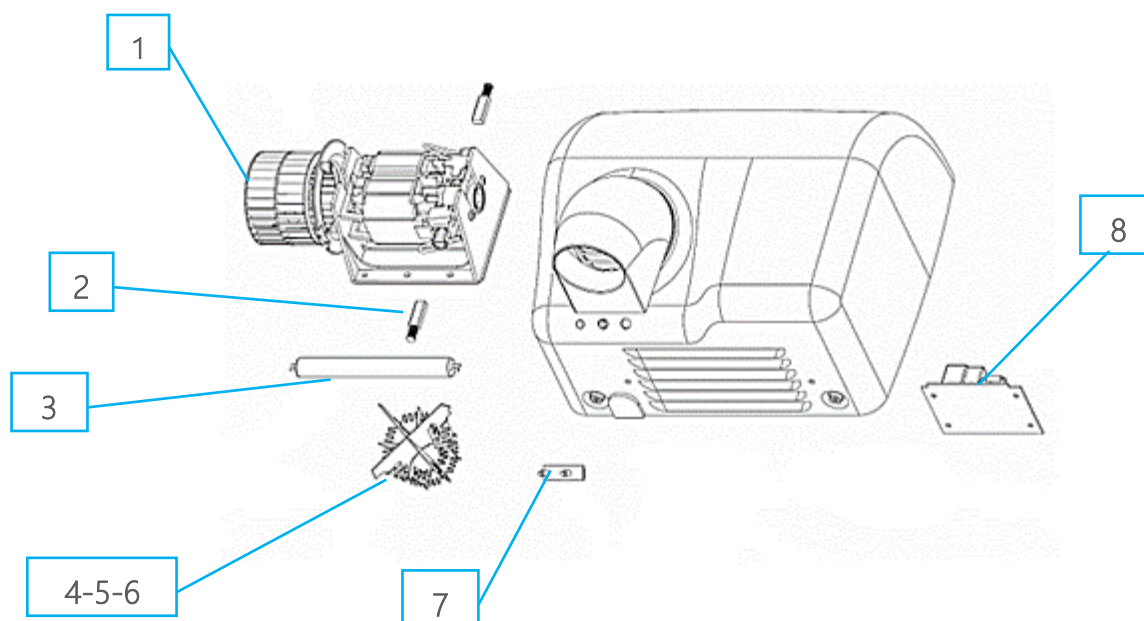
n.48 pieces per pallet, weight: kg 395.



# MG88A 250UVC

## ELECTRIC HOT-AIR HAND DRYER WITH UVC LAMP

### RECOMMENDED SPARE PARTS



1	MGR253	LEM kit electric motor 230V 250W
2	MGR174A	Pair of electric motor brushes
3	MGR206	UVC lamp
4	MGR121P2	Electrical resistance 1500W (OPTION)
5	MGR121P4	Electrical resistance 1000W (OPTION)
6	MGR121P3	Electrical resistance 2000W (STANDARD)
7	MGR156A	Photosensors
8	MGR155A	Electronic card
9	MGR145	Spiral-shaped LEM

### PACKAGING AND EQUIPMENT

N°1	Main unit (DRYER)
N°4	Plastic plugs for wall mounting
N°4	Steel screws for wall mounting
N°1	Special spanner for lid removal/installation
N°1	Cable gland M20
N°1	Instruction manual with individual acceptance certificate



WARNINGS FOR THE CORRECT DISPOSAL OF THE PRODUCT IN ACCORDANCE WITH EUROPEAN DIRECTIVE 2002/96/EC.

At the end of its useful life, the product must not be disposed of with municipal waste. It can be handed in at the special separate collection centres set up by municipal authorities, or at retailers who provide this service. Disposing of a household appliance separately avoids possible negative consequences for the environment and health resulting from its inappropriate disposal and allows the materials from which it is made to be recovered in order to achieve significant savings in energy and resources.