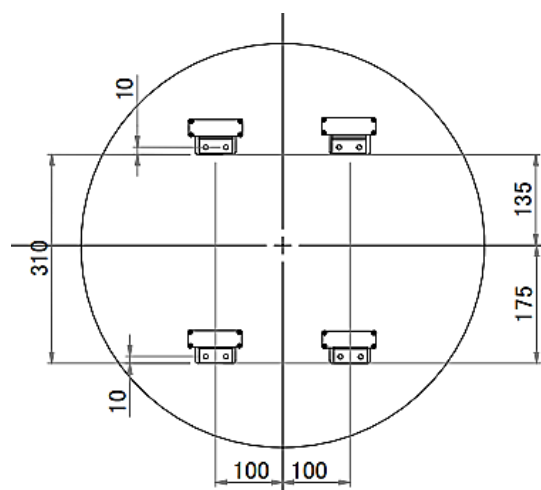
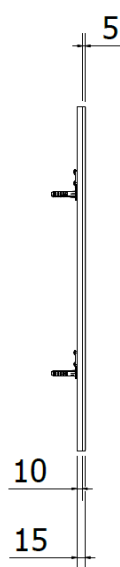
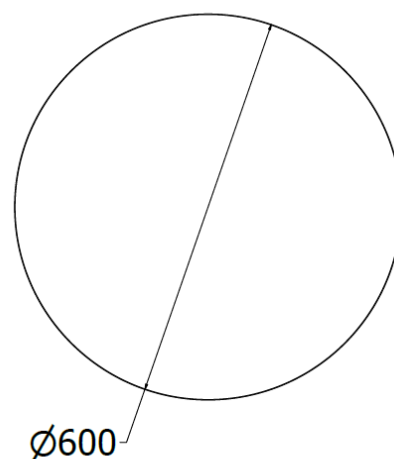


CDS-060

WALL-MOUNTED ROUND MIRROR



SPECIFICATION ITEM

Round polished 5-mm thick mirror with safety film applied with accident-preventing gluing system and with HPL back support. Concealed wall mounting system.

TECHNICAL SPECIFICATIONS

composition	HPL / safety mirror
finish	Polished
weight	4 Kg
size	Ø 600 x 15 mm
mirror	5 mm

CDS-060

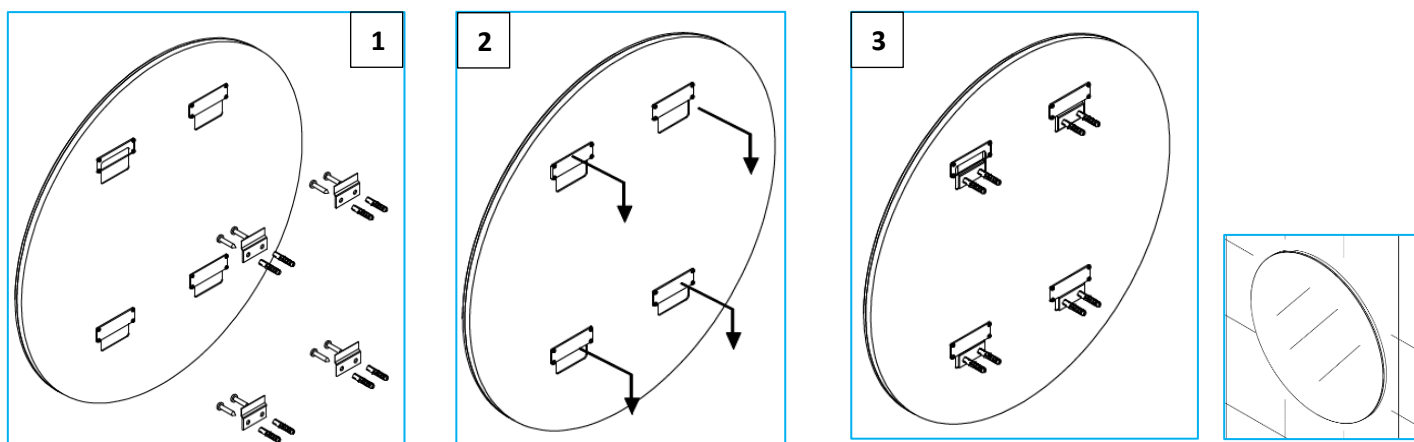
WALL-MOUNTED ROUND MIRROR

INSTALLATION

Wall mounting by means of 4 wall plugs; 4 shaped slots of 25x9 mm are provided on the fixing bracket.

NOTE: as the fixing plugs depend on the type of wall on which the installation is to be made, they are not supplied.

Periodically check that the mirror is correctly fixed to the wall.



CLEANING AND MAINTENANCE

Clean metal surfaces with a soft cloth (microfiber, no abrasive products) and neutral cleaning agents or denatured alcohol.

PRODUCTS TO BE AVOIDED: acid detergents, bleach, Lysol, limescale remover, silver cleaning products, abrasive powders, wire wool, steel wool, abrasive pastes.

PACKAGING AND EQUIPMENT

N°1	Main unit (MIRROR)
N°4	Fixing brackets



The most correct way to dispose of the product is to throw it in the bulky waste bin or take it to authorised recycling centres.