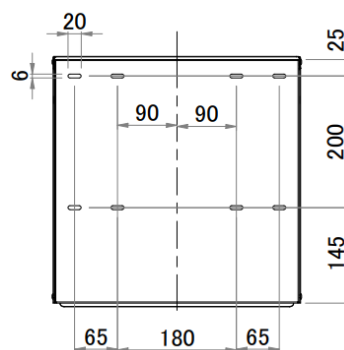
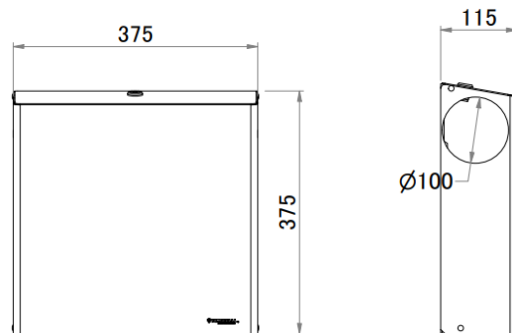


BLU7305

SANITARY NAPKINS BIN



SPECIFICATION ITEM

Wall-mounted bin, equipped with lockable lid. Made of stainless steel, in polished or satin finish. Double opening on the sides for waste introduction. Bag-holding notches. Easy bag extraction.

ASSORTMENT

BLU7305C-S4	INOX AISI 304 POLISHED	BLU7305S-S4	INOX AISI 304 SATIN
-------------	------------------------	-------------	---------------------

TECHNICAL SPECIFICATIONS

activation	manual
composition	AISI304 stainless steel bottom thickness 0.8 mm-AISI 304 stainless steel cover thickness 0.8 mm
height	375mm
width	375 mm
depth	115 mm
capacity	16 litres
weight	4.5 Kg

INSTALLATION:

Wall mounting by means of the provided kit.

CLEANING:

Clean metal surfaces with a soft cloth (microfiber, no abrasive products) and neutral cleaning agents or denatured alcohol. For satin-finished surfaces, clean in the direction of the satin finish.

PACKAGING:

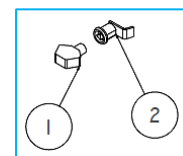
Single cardboard box packaging. The box includes:

N° 1 bin

N° 8 plastic plugs for wall mounting

N° 8 steel screws for wall mounting

N° 1 key for lock



COD SPARE PARTS	DESCRIPTION
1-2 BLUSERRA7520_SW	COMPLETE LOCK + TRIANGLE KEY



The most correct way to dispose of the product is to throw it in the metal bin or take it to authorised recycling centres.