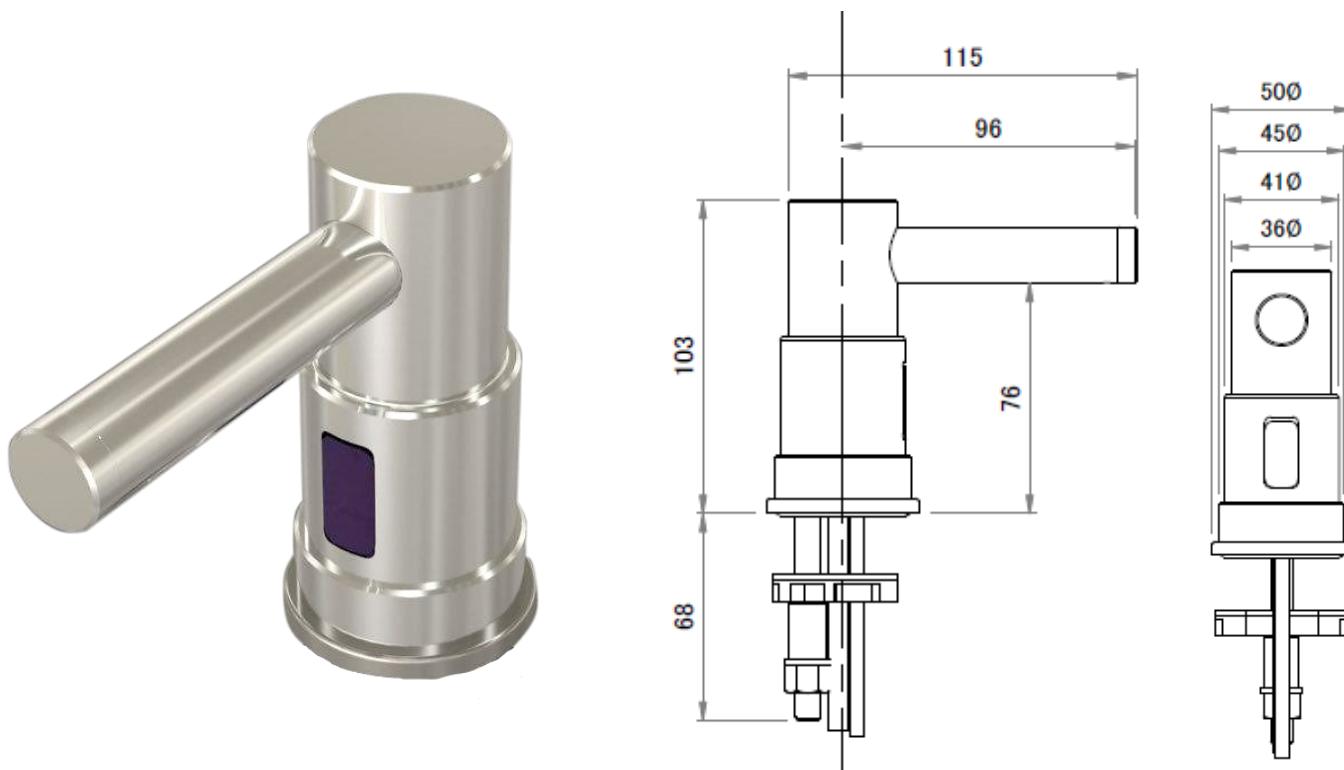


# BLU4210

## AUTOMATIC SURFACE-MOUNTED SOAP DISPENSER



### SPECIFICATION ITEM

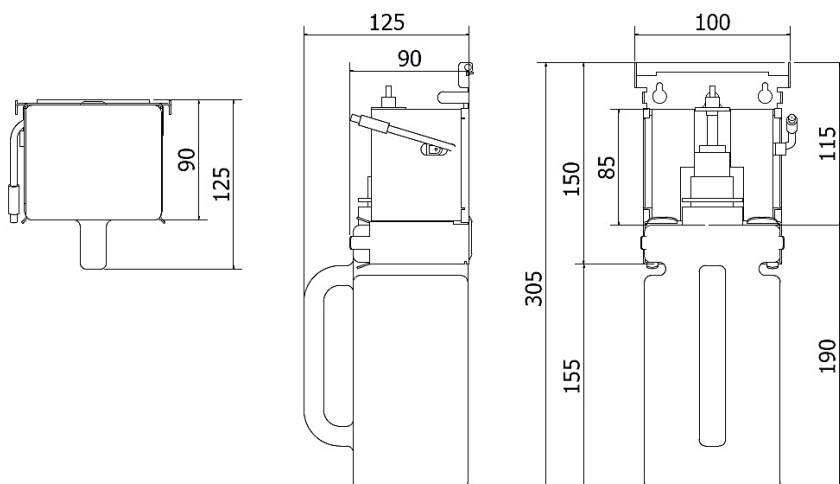
Robust electronic liquid soap dispenser for washbasin top, equipped with pump system operated by infrared photo-sensors.

### TECHNICAL SPECIFICATIONS

activation	infrared sensor (5-15 cm)	liquid soap dosage [ml (fl oz)]	1 – 1.5 ml
composition	Chrome-plated brass	soap foam dosage [ml (fl oz)]	0.6 – 0.8
internal components	OT-INOX	steady red LED	low battery
material		flashing red LED	need to refill
mains frequency	6V transformer power supply	steady green LED	soap too thick
power supply	Batt, Alkaline (1.5V) AA, 4 pcs (battery life 20000 cycles)	maximum distance between dispenser and soap tank	250 mm
option power supply	100-240 VAC (50/60 Hz) 6 VDC 1A transformer	soap dispenser storage	in case of delayed use, store in a dry and cool place
tank capacity	1500 ml		
soap viscosity liquid [cP(MPas)]:	5 - 2500		

# BLU4210

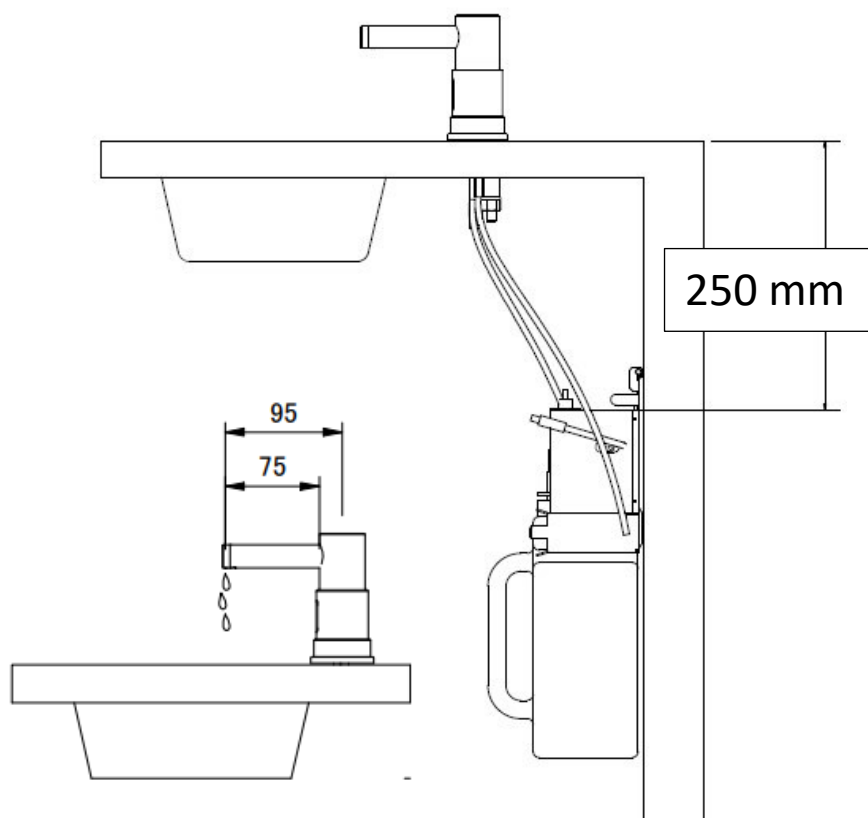
## AUTOMATIC SURFACE-MOUNTED SOAP DISPENSER soap pumping system



### RECOMMENDED INSTALLATION HEIGHT

For correct installation, we recommend fixing the soap pump system at a maximum distance of 250 mm from the washbasin top (as illustrated).

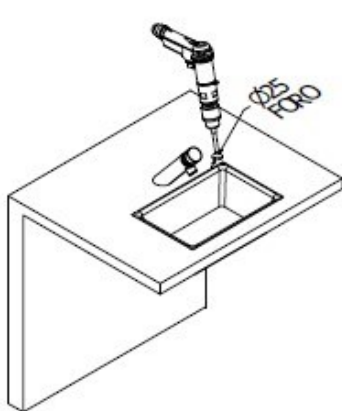
Caution!!!! Before drilling the washbasin top, make sure that the position of the drop of the soap is inside the basin.



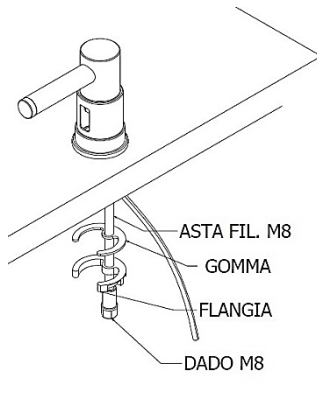
## INSTALLATION

### FAILURE TO FOLLOW THE INSTALLATION INSTRUCTIONS INVALIDATES THE WARRANTY CONDITIONS OF THE PRODUCT

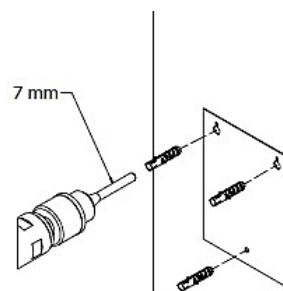
1. Drill the surface where the tap is to be installed with a  $\varnothing 25$  mm drill (fig. 1);
2. Insert the soap dispenser through the hole in the base (fig. 2), place the support ring above the surface, then first insert the o-ring gasket then place the faucet body in the desired position. Thread omega gasket and ring nut into threaded rod. Screw in threaded rod and tighten everything with the supplied m8 nut;
3. Make sure the soap hose can touch the wall to find the best position to install the control box assembly;
4. Place the mounting template in the best installation position on the wall, according to the position of the holes on the template drill three 7 mm holes and insert the three dowels into the holes (fig. 3);
5. Insert two fixing screws into the upper wall holes but leave a 6 mm space between the screw head and the wall so that the control box assembly can hang properly (fig. 4);
6. When the control box assembly has been hung on the wall, fasten the third screw in the lower wall socket (fig. 5);
7. Lift up the soap pump, fill with liquid soap, then push down the soap pump until you hear it click into place (fig. 6);
8. Connect the soap dispenser cables to the control box assembly cable (fig. 7), connect the soap dispenser hose to the connector on the soap pump (fig. 7);
9. Push the soap tank onto the rail. Make sure the soap pump plate is under the push shaft before putting the soap tank back on, so that the soap dispenser can work properly (fig. 8);
10. Connect a power supply or battery box to power (fig. 8). Installation is finished.



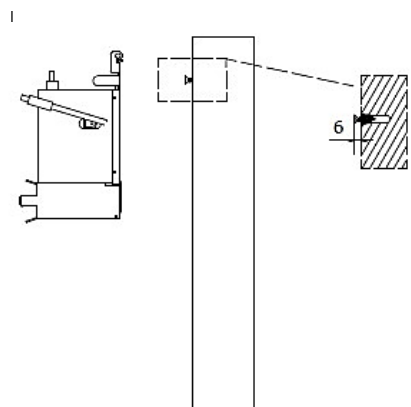
1



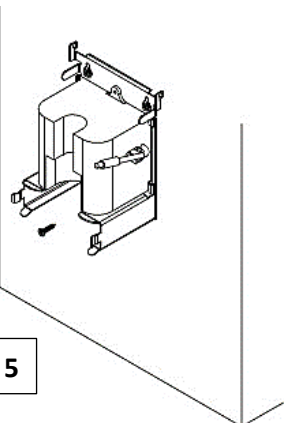
2



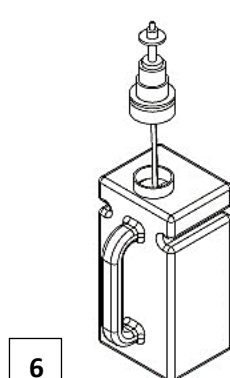
3



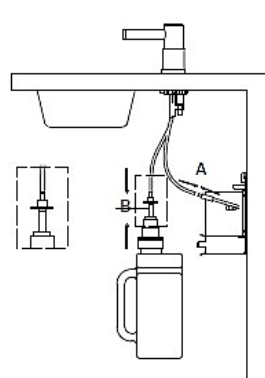
4



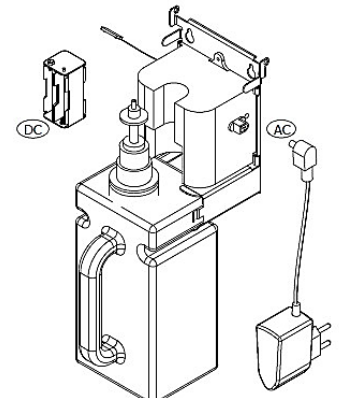
5



6



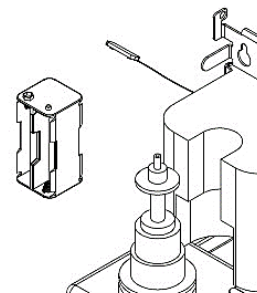
8



8

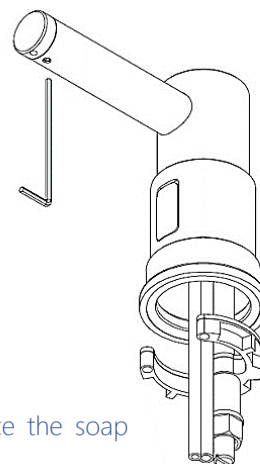
## OPERATING INSTRUCTIONS

1. Open the cover on the battery compartment, remove the battery box and disconnect the cable; install four AA Alkaline batteries with correct polarity;
2. Reinstall the battery box;
3. Activate the sensor with hands or a towel to check the correct soap dispensing cycle.



## IMPORTANT WARNING

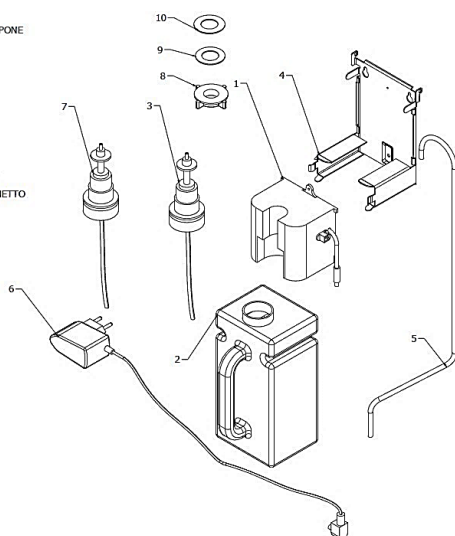
1. Use only fresh liquid soap and clean the soap container properly before each filling;
2. Do not dilute liquid soap unless it is concentrated and do not use soap containing abrasive. Observe the indicated viscosity factor of liquid soap;
3. Do not immerse the soap dispenser in water or clean it under running water. This would cause a short circuit;
4. If the dispenser is out of service and the batteries have been replaced, call your dealer for technical assistance.



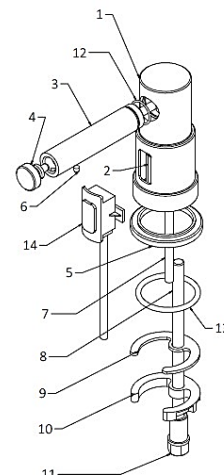
## MODIFY OR CLEAN THE OUTPUT

1. If you want to use a different pump, use allen wrench N° 2 to change and replace the soap dispensing nozzle;
2. When the foam volume is reduced, remove the foam net with the wrench and wash it;
3. It is recommended to clean the foam net and its outlet every three months.

- 1 MOTORE EROGAZIONE SAPONE
- 2 SERBATOIO SAPONE
- 3 POMPA SAPONE LIQUIDO
- 4 STAFFA DI SUPPORTO
- 5 TUBO GOMMA
- 6 ALIMENTAZIONE AC
- 7 POMPA SAPONE SCHIUMA
- 8 GHIERA FISSAGGIO RUBINETTO
- 9 GUARNIZIONE NYLON
- 10 GUARNIZIONE GOMMA



- 1-CORPO DOSATORE SAPONE
- 2-MOLLA
- 3-BOCCA USCITA SAPONE
- 4-UGELLO SAPONE
- 5-ANELLO DI APPOGGIO
- 6-GRANO M4x4
- 7-TUBO MANDATA ø6-ø4 int
- 8-TIRANTE M8x140
- 9-GUARNIZIONE A OMEGA
- 10-FLANGIA
- 11-DADO M8 (ES 13)
- 12-O-RING ø16/18.5X1.25 NBR 70
- 13-O RING OR142 NBR 70
- 14-SENSORE (C4200R-156)



## PACKAGING AND EQUIPMENT

N°1	Main unit
N°1	Instruction manual
N°1	Fastening kit
N°1	Single cardboard box packaging
N°1	Power supply adapter 220-240 VAC 50/60Hz. Output 6V/1A



### WARNINGS FOR THE CORRECT DISPOSAL OF THE PRODUCT IN ACCORDANCE WITH EUROPEAN DIRECTIVE 2002/96/EC.

At the end of its useful life, the product must not be disposed of with municipal waste. It can be handed in at the special separate collection centres set up by municipal authorities, or at retailers who provide this service. Disposing of a household appliance separately avoids possible negative consequences for the environment and health resulting from its inappropriate disposal and allows the materials from which it is made to be recovered in order to achieve significant savings in energy and resources.