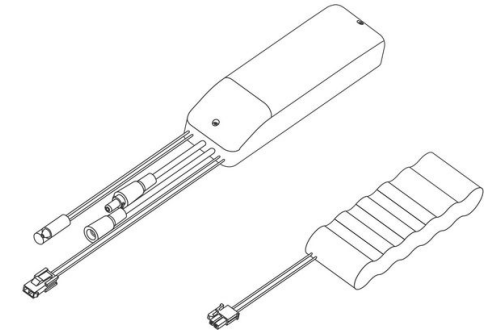


EM Kit R

Codice: 22096035-00



Kit per l'alimentazione in versione EM completo di connettori.  
MAX 54W



INFORMAZIONI GENERALI

Articolo	EM Kit R
Codice	22096035-00

DIMENSIONI E PESO

Lunghezza (mm)	200 mm
Larghezza (mm)	50 mm
Altezza (mm)	60 mm
Peso (Kg)	0.4 kg

CARATTERISTICHE ELETTRICHE E CONTROLLI

Tipo di tensione	AC/DC
Tensione (V)	230 V

## EM Kit R

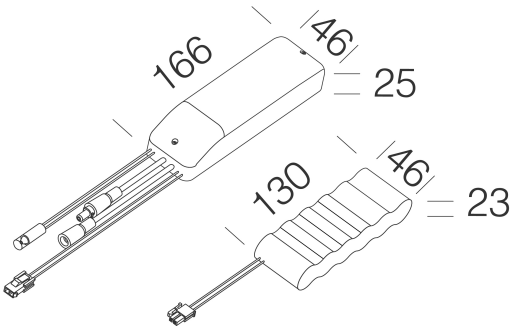
---

Codice: 22096035-00



EM Kit R

Codice: 22096035-00



Tipo di emergenza	S.A.
Durata batteria	1h

NORME E CONFORMITÀ

Marche e test	CE
---------------	----

GARANZIA

Garanzia post-vendita	5 yr
-----------------------	------

DOWNLOAD

MONTAGGI

IstruzioniMontaggio Kit EM Acc-960xx rev5 12-23.pdf

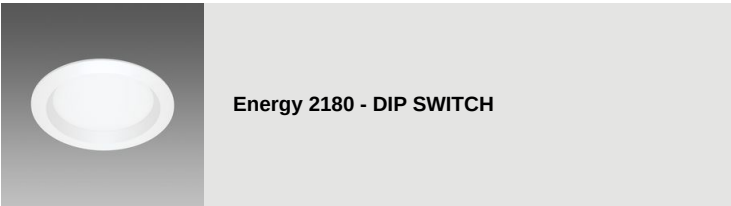
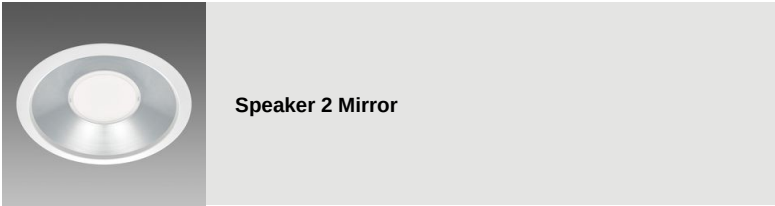
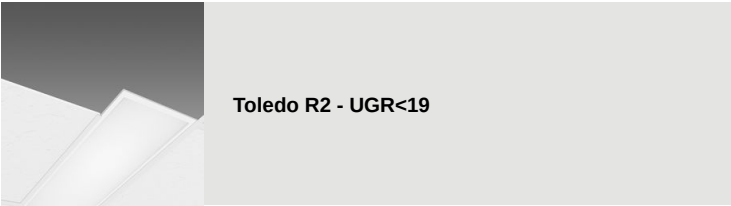
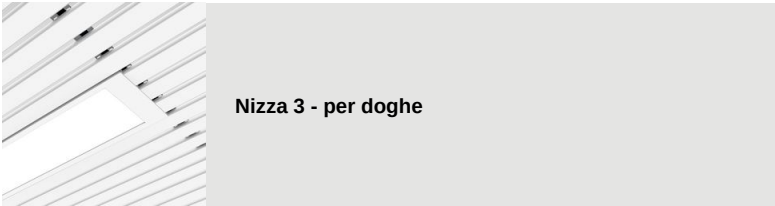
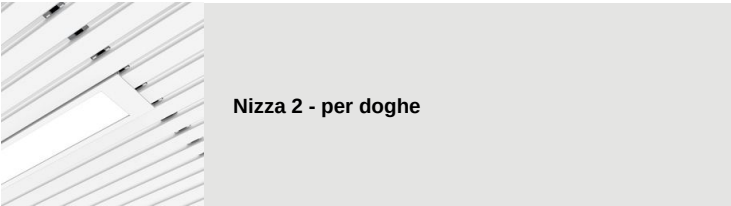
DISEGNI

DisegnoTecnico emkit.dxf



EM Kit R

Codice: 22096035-00



EM Kit R


Codice: 22096035-00



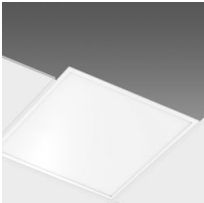
PanelTech HE A2 - UGR<19



PanelTech HE R2 - UGR<19



Pannello B - R2




Pannello B



PanelTech HP R2 - UGR<19



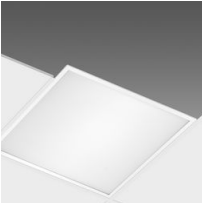
PanelTech R2 - UGR<19 - DIP SWITCH



Energy 2245 - DIP SWITCH



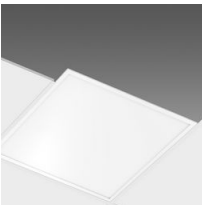
PanelTech HE R2 - UGR<19 - DIP SWITCH



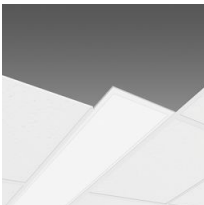
PanelTech HE A2 - UGR<19 - DIP SWITCH



PanelTech A - UGR<19 - DIP SWITCH



Pannello B - DIP SWITCH



Pannello B - R2 - DIP SWITCH




Office 1 Dark - DIP SWITCH



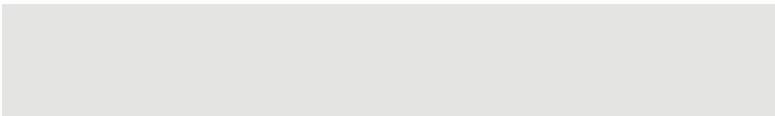
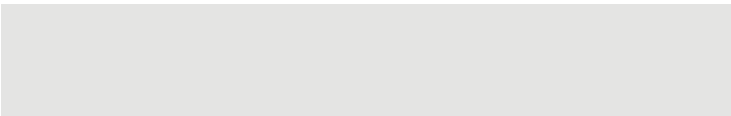
Office 2 Dark - DIP SWITCH



Speaker 1

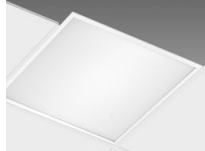


Speaker 2





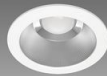
**Snow 5 - CCT DIP SWITCH**



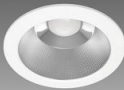
**Toledo HE - UGR<19 - DIP SWITCH**



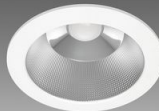
**Toledo R2 HE - UGR<19 - DIP SWITCH**



**Techno B 114 - CCT - DIP SWITCH**



**Techno B 174 - CCT - DIP SWITCH**



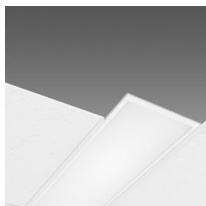
**Techno B 232 - CCT - DIP SWITCH**



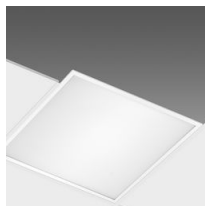
**Milano small - UGR<19 - CCT DIP SWITCH**



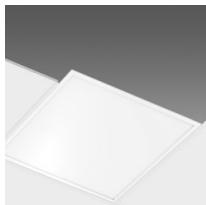
**Milano big - UGR<19 - CCT DIP SWITCH**



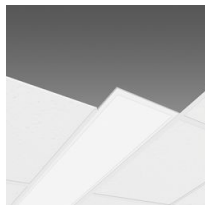
**Toledo R2 HP - UGR<19**



**Toledo HP - UGR<19**



**Toledo HP - UGR<22**



**Toledo R2 HP - UGR<22**



**Toledo - SENSOR**



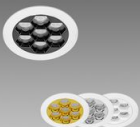
**Rubin small - CCT SWITCH**



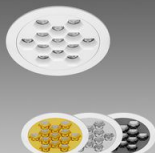
**Rubin medium - CCT POWER-SWITCH**



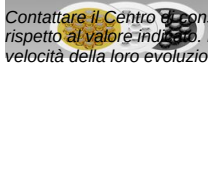
**Rubin big - CCT POWER-SWITCH**



**Honey ø120 - UGR<19 - CCT - DIP SWITCH**



**Honey ø165 - UGR<19 - CCT - DIP SWITCH**



**Honey ø190 - UGR<19 - CCT - DIP SWITCH**

Contattare il Centro di consulenza e progettazione per qualsiasi informazione illuminotecnica. Il flusso luminoso uscente riportato indica il flusso luminoso dell'apparecchio con una tolleranza di  $\pm 10\%$  rispetto al valore indicato. La potenza assorbita totale non supera il 10% del valore indicato. Le informazioni illuminotecniche possono essere soggette a variazioni e miglioramenti a causa della velocità della loro evoluzione tecnologica. Monday, October 6, 2025



**Honey ø225 - UGR<19 - CCT - DIP SWITCH**