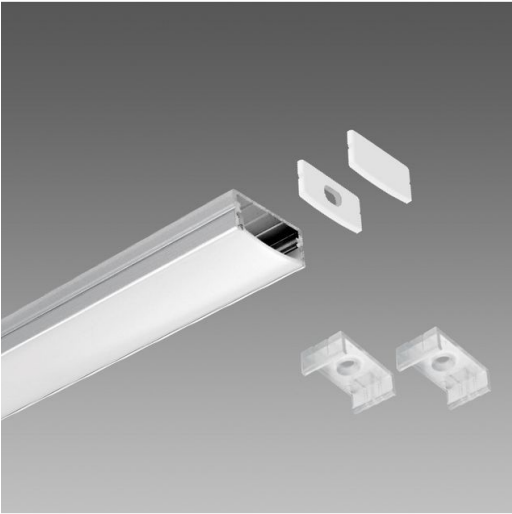


Profilo D

Codice: 22012213-00



Gamma di profili in alluminio estruso per la installazione di Strip LED. La facilità di installazione e la linearità del loro design permettono molteplici applicazioni con effetto architettonico. in policarbonato opale.
 -testatine terminali
 -attacchi a plafone e/o parete



INFORMAZIONI GENERALI

Articolo	Profilo D
Codice	22012213-00

DIMENSIONI E PESO

Lunghezza (mm)	2000 mm
Larghezza (mm)	23 mm
Altezza (mm)	11 mm
Peso (Kg)	1.1 kg

Profilo D

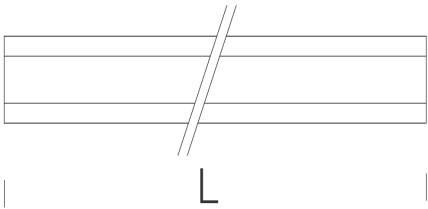
Codice: 22012213-00



Profilo D

Codice: 22012213-00

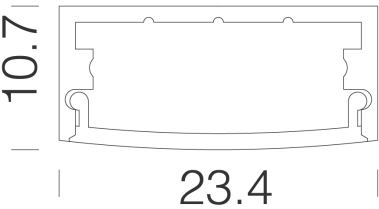
MATERIALI E COLORI



Corpo	in alluminio estruso.
Colore	Opale

GARANZIA

Garanzia post-vendita	0 yr
-----------------------	------



DOWNLOAD

MONTAGGI

IstruzioniMontaggio PROFILO 0122 LED rev1
0624.pdf


DISEGNI

DisegnoTecnico prod.dxf




Profilo D


Codice: 22012213-00




Strip 60LED - IP20 - CRI 80 - 24V - 100lm-W



Strip 120LED - IP20 - CRI 80 - 24V - 100lm-W



Strip 120LED - IP65 - CRI 80 - 24V - 100lm-W



Strip 120LED - IP65 - CRI 80 - 24V - 120lm-W