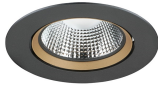


## Exospot 90 adjustable

EXOSPOT 90 ADJUSTABLE HO RA90 3000K MB BLACK

2070111



### Caratteristiche prodotto

- Integrated LED adjustable accent downlight, single head, ideal for retail and display applications, die-cast aluminium body, black colour housing, passive cooling, beam angle: 44°, optics: aluminium reflector and lens combination, colour temperature: 3000K, total system power: 35W, total fixture output: 3180lm, 91lm/W, LOR: 100%, colour rendering: Ra 90 typical, LED Chromacity: 3 step MacAdam ellipse, IR/UV free light source without heat radiation, operating voltage: 220-240V / 50-60Hz, electronic driver, non-dimmable, electrical protection: CLASS II, ingress protection rating: IP20, suitable for internal environment only, ceiling cut-out: 140mm, outer dimensions: 150x104mm, weight: 0.77kg.



### PANORAMICA DEL PRODOTTO

Nome prodotto	EXOSPOT 90 ADJUSTABLE HO RA90 3000K MB BLACK
Tecnologia	LED
Cap/Base	N/A
Housing	Alluminio
Montaggio	Ceiling recessed mounting
Fixture rating	Chiuso
General application	Strutture alberghiere, Musei e gallerie, Esercizi commerciali
ETIM Class	EC001744
Garanzia	5 years
Fixture luminous flux (lm)	3180
Luminaire efficacy (lm/W)	91
L.O.R. (%)	100
Temperatura di colore (K)	3000
Colore della luce	Bianco Caldo
CRI (Ra)	90
Consistenza colore (SDCM)	SDCM3
Beam Angle (°)	44
Gruppo di rischio fotobiologico	RG1
Potenza totale (W)	35
Electrical protection	Classe II
Tipologia reattore	Electronic ballast
Montaggio reattore	Remote
Dimmable	No
Dimming method	N/A
Colore corpo lampada	Nero
IP rating	IP20
IK rating	IK02
Product EAN number	5025768701117

### TABELLA DATI

## Expospot 90 adjustable

*EXPOSPOT 90 ADJUSTABLE HO RA90 3000K MB BLACK*

2070111

### Dati generali

<b>Nome prodotto</b>	EXPOSPOT 90 ADJUSTABLE HO RA90 3000K MB BLACK
<b>Tecnologia</b>	LED
<b>Cap/Base</b>	N/A
<b>Housing</b>	Alluminio
<b>Montaggio</b>	Ceiling recessed mounting
<b>Fixture rating</b>	Chiuso
<b>General application</b>	Strutture alberghiere, Musei e gallerie, Esercizi commerciali
<b>Operating temperature range (°C)</b>	25°C...+25°C
<b>Performance ambient temperature Tq (°C)</b>	25
<b>ETIM Class</b>	EC001744
<b>Garanzia</b>	5 years

### Dati ottici

<b>Fixture luminous flux (lm)</b>	3180
<b>Luminaire efficacy (lm/W)</b>	91
<b>L.O.R. (%)</b>	100
<b>Temperatura di colore (K)</b>	3000
<b>Colore della luce</b>	Bianco Caldo
<b>CRI (Ra)</b>	90
<b>Consistenza colore (SDCM)</b>	SDCM3
<b>Beam Angle (°)</b>	44
<b>Distribution type</b>	Diffuse
<b>Gruppo di rischio fotobiologico</b>	RG1

### Dati elettrici

<b>Potenza totale (W)</b>	35
<b>Tensione di rete (V)</b>	230-240V
<b>Lamp power factor</b>	0.95
<b>THD (at 230 V, 50 Hz, full load, at 100% dimming level) xx.x %</b>	10
<b>Electrical protection</b>	Classe II
<b>Control gear required</b>	No
<b>Tipologia reattore</b>	Electronic ballast
<b>Montaggio reattore</b>	Remote
<b>Transformer required</b>	No
<b>Dimmable</b>	No
<b>Dimming method</b>	N/A
<b>Drive current (mA)</b>	300
<b>Corrente di spunto (A)</b>	17
<b>Durata picco di corrente (µs)</b>	199
<b>Glow Wire Test (°C)</b>	850
<b>Energy Efficiency Class (A-&gt;G) of contained light source</b>	E
<b>Nominal Frequency (Hz)</b>	50/60Hz
<b>Quantità max. apparecchi per interruttore 10A tipo C</b>	31
<b>Max. Luminaires per 13A C Breaker</b>	41

## Expospot 90 adjustable

EXPOSPOT 90 ADJUSTABLE HO RA90 3000K MB BLACK

2070111

Quantità max. apparecchi per interruttore 16A tipo C 51

Max. Luminaires per 20A C Breaker 65

Max. Luminaires per 10A B Breaker 19

Max. Luminaires per 13A B Breaker 25

Max. Luminaires per 16A B Breaker 31

Max. Luminaires per 20A B Breaker 39

### Dati vita utile

Vita utile nominale - L70 B50 100000

Vita utile nominale - L80 B20 100000

Vita utile nominale - L90 B10 54500

### Dati dimensionali

Colore corpo lampada Nero

IP rating IP20

IK rating IK02

Diffuser finish Prismatico

Diffuser material Other

Finitura del riflettore Other

Larghezza nominale prodotto (mm) 150

Nominal Product Height (mm) 104

Cutout Dimensions (W x L in mm or Diameter in mm) 140

Peso (Kg) 0.77

Recessed Depth (mm) 104

### Dati di imballo

Tipologia imballo singolo Carton

Product EAN number 5025768701117

Lunghezza imballo singolo (mm) 18.0

Larghezza imballo singolo (cm) 18.0

Packaging single depth (cm) 16.0

DUN14 (outer) 05025768701117

Quantità per imballo esterno 1

Packaging outer length / height (cm) 18.0

Packaging outer width (cm) 18.0

Packaging outer depth (cm) 16.0

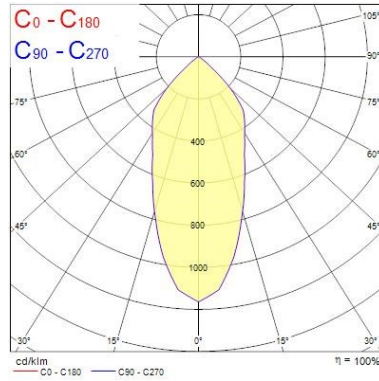
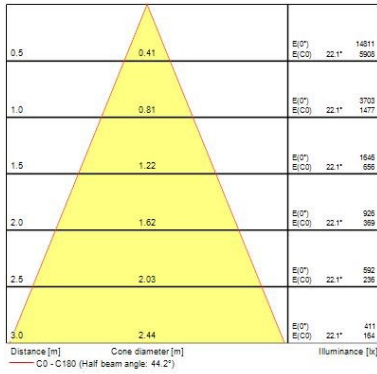
### Dati di sicurezza

Temperatura ottimale di utilizzo (°C) 25-25

## FOTOMETRIA

## Expospot 90 adjustable

EXPOSPOT 90 ADJUSTABLE HO RA90 3000K MB BLACK  
2070111



## DISEGNI TECNICI

