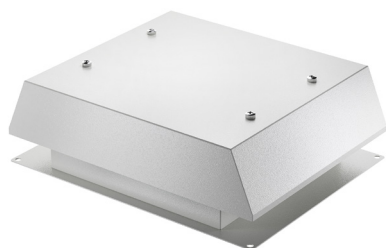


**T19U115B**

standard with fan

> CONTACT US



T series roof exhaust units represents an optimal solution for heat dissipation through the top of electrical cabinets. They are ideal for indoor use where there is limited space on the front and side panels. According to the ambient conditions these units can operated with fan (forced air) or without a fan (natural air convection).

Technical data		
APPROVALS		
Approvals	CE; UKCA	
PERFORMANCE		
Max Airflow	550/590	m³/h
	324/347	CFM
Airflow with Exhaust Filter	487/525	m³/h
	287/309	CFM
Max Static Pressure	370/510	Pa
	1.49/2.05	in H2O
ELECTRICAL DATA		
Rated Voltage	115	V a.c.
Rated Current	0.52/0.62	A
Rated Power	57/71	W
Operating Voltage	103.5-126.5	V a.c.
Frequency	50/60	Hz
Appliance Class	I	
Motor Protection	Thermally Protected	
GENERIC DATA		
RAL Number	7035	
Electrical Connection	Wires	
Life Expectancy	70000/70000	h at 25 °C
	70000/70000	h at 77 °F

Image is for illustrative purpose only. All specifications, data and drawing are subject to change without notice. Please refer to our terms of sales including our warranty and limited liabilities clauses.

**T19U115B**

standard with fan

> CONTACT US

VENTILATION SYSTEMS

Technical data		
Wires Section	1	mm <sup>2</sup>
Fan Noise	63/64	dB(A)
ENVIRONMENTAL AND THERMAL DATA		
IP Protection Degree	IP23	
Operating Temperature	-20÷60	°C
	-4÷140	°F
Storage Temperature	-30÷70	°C
	-22÷158	°F

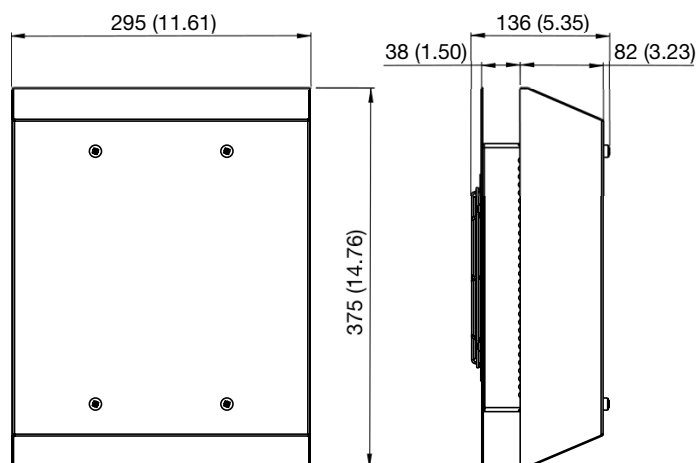
Image is for illustrative purpose only. All specifications, data and drawing are subject to change without notice. Please refer to our terms of sales including our warranty and limited liabilities clauses.

T19U115B

standard with fan

> CONTACT US

Technical drawing mm (in)



Mounting cut-out mm (in)

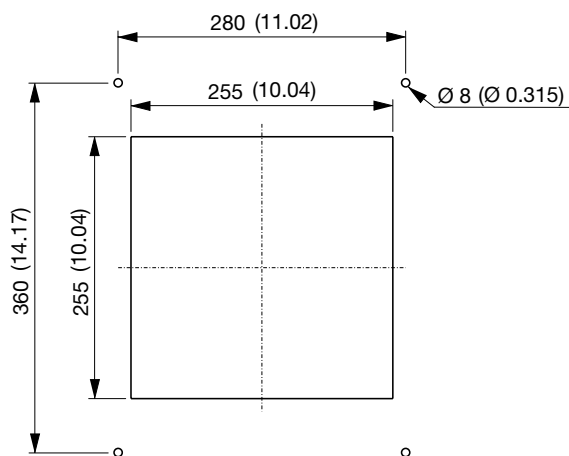


Image is for illustrative purpose only. All specifications, data and drawing are subject to change without notice. Please refer to our terms of sales including our warranty and limited liabilities clauses.

**T19U115B**

standard with fan

> CONTACT US

VENTILATION SYSTEMS

### Air performance

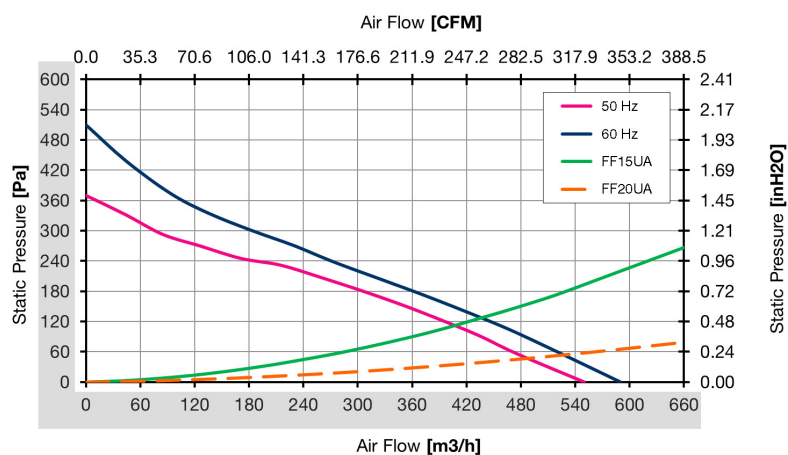


Image is for illustrative purpose only. All specifications, data and drawing are subject to change without notice. Please refer to our terms of sales including our warranty and limited liabilities clauses.