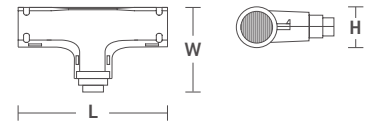
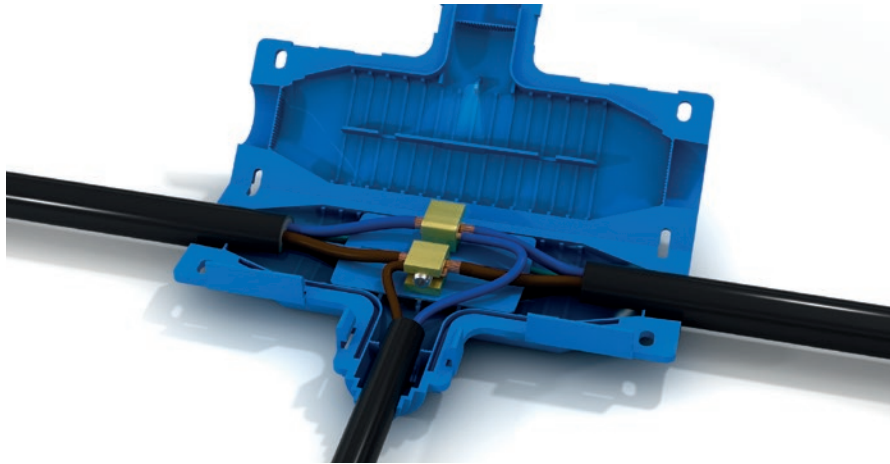




400 Series

T-branch



size	dimensions (mm) L × W × H
size 1T	210 × 125 × 49
size 2T	250 × 143 × 46



600 Series

Y-branch



size	dimensions (mm) L × W × H
size 1Y	145 × 70 × 32
size 2Y	220 × 110 × 53
size 3Y	260 × 130 × 65

APPLICATIONS

- Low voltage branch cable joints up to 0.6/1 kV
- Types of installation: directly buried, overhead, in cable ducts
- Street, tunnel lighting systems

KEY FEATURES

- **Pre-filled: no resin or gel to cast**
- Ready to install
- **Branch joint with uninterrupted main cable**
- Excellent electrical insulation and good mechanical strength
- **No accidental access to live parts (IEC EN 60364)**
- Unlimited shelf life
- **2 types, 5 sizes, 9 versions** and a **complete range of connectors/terminal blocks** for use with multiple types of cables

400 Series recommended connectors



BC series
compression
connectors (page 118)



Scan the QR-code to select suitable connector based on joint and cable cross-section



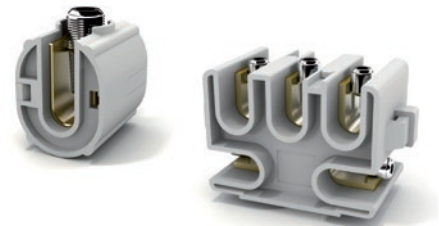
MU series
screw connectors
(page 116)



Scan the QR-code to select suitable connector based on joint and cable cross-section

600 Series included connectors and terminal blocks

Shark[®] 600 Series joints include connectors and terminal blocks for branching the main cable without interruptions. They have brass conductors with hex grub screw and UL 94 V2 self-extinguishing class PA 6.6 insulating body



Compliant to Standard for
0.6/1 kV low voltage joints
EN 50393

Self-extinguishing
EN 60695-2-11

Low smoke and toxic
gases emission
CEI 20-37/2-1
CEI 20-37/4

Degree of protection
equivalent to IPX8
(1 meter depth immersion test,
EN 50393 art. 8.7)

Operating temperature range
-20 °C / +90 °C



CE Marking



IMQ Certified
(400 series)



RINA Certified
(400 series)



Double insulation



Ready to use



Re-enterable



Unlimited
shelf life



Compliant to
Directive
EU 2015/863 (RoHS 3)



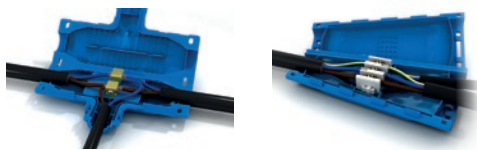
Non-toxic



Eco-friendly



Halogen free



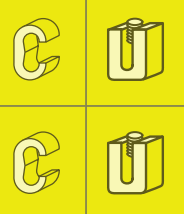
Suggested Connectors

scan QR-code to download connector selection table



BC (page118) **MU** (page116)

cores / branch type	ref.	item	cross-section range* (mm ²)		included accessories	size	pkg. (pcs)	min./mult. ord. q.ty (pcs)	watch video
			main cable	branch cable					
	SH0125	SHARK 125	6 – 25	1.5 – 10		size 0	1 12		
	SH0150	SHARK 150	10 – 50	2.5 – 35		size 1	1 12		
	SH6150	SHARK 150Y	10 – 35 r. 10 – 50 f.	2.5 – 25		size 1Y	1 1		
	SH1425	SHARK 425/S	70 – 150	10 – 50	–	size 1T	1 1		
	SH1435	SHARK 435/S	95 – 240	50 – 120	–	size 2T	1 1		



INSTALLATION ACCESSORIES



Screw-type insulated connector for copper-to-copper connections without interrupting main cable (hex key included)



Connettore ad U con serraggio a brugola for copper-to-copper connections without interrupting main cable (hex key included)



5-pole screw-type terminal block for copper-to-copper connections without interrupting main cable (hex key included)



Separatore delle fasi

SUGGESTED CONNECTORS



BC series C-shape compression connector (p. 118) for copper-to-copper and aluminium-to-aluminium connections without interrupting main cable



MU series connector (p. 116) for copper-to-copper connections without interrupting main cable (hex key included)



Suggested Connectors

scan QR-code to download connector selection table



BC (page118) **MU** (page116)



cores / branch type	ref.	item	cross-section range* (mm ²)		included accessories	size	pkg. (pcs)		min./mult. ord. q.ty (pcs)	watch video
			main cable	branch cable						
	SH0425	SHARK 425	6 – 25	1.5 – 16		size 1T	1	1		
	SH0435	SHARK 435	10 – 35	2.5 – 25		size 2T	1	1		
	SH6516	SHARK 516Y	6 r.	2.5 – 16		size 2Y	1	1		
			6 – 16 f.							
	SH6535	SHARK 535Y	10 – 25 r.	2.5 – 25		size 3Y	1	1		
			16 – 35 f.							

Optional accessories

	SRC001	SRC 1	Cable strain relief system for size 4 e size 5 joints	1	1	-	
--	---------------	-------	---	---	---	---	--

NOTES

* Listed cross-sections refer to installations with recommended connectors with uninterrupted main cable

r. rigid conductor, f. flexible conductor

SHARK 125: for 25 mm² main cable, max branch cable is 6 mm²

SHARK 150Y:
for 35 mm² main cable, max branch cable is 10 mm²
for 50 mm² main cable, max branch cable is 6 mm²

SHARK 150:
for 50 mm² main cable, max branch cable is 6 mm²

NOTE

- BEK Series armour bonding kit (p. 119) available for armoured cables
- All kits include cable ties and instructions