

Flusso continuo, a filo

CODICE A CATALOGO

PCFF1YZ

Purge and Pressurization is a protection method used with Type 4, 4X and 12 (IP54 recommended minimum) enclosures. The enclosure is initially purged to remove any internal explosive gases or dust. Once this is accomplished, the enclosure is pressurized with a protective air or inert gas supply. This provides a positive internal enclosure pressure which keeps any external explosive gases or dust from entering the enclosure. The two methods of purge and pressurization offered are Leak Compensation and Continuous Flow.

Leak Compensation maintains positive pressure by compensating for losses. System consists of Control Unit and Relief Valve. Certification Type Y and Z models: • Flush (internal) or external mount models • Local visual alarm indicator and dry contact output for remote alarm • Typically recommended for enclosures with volume of 60 Ft3 or less. Certification Type X Model: • Provides power disconnect when pressurization is lost or not attained • Provides automatic purge process • External mount • Local visual alarm indicator and dry contact output for remote alarm • Typically recommended for enclosures with volume of 60 Ft3 or less.

Continuous Flow provides positive pressure via continuous protective air flow through the enclosure. System consists of Control Unit, Calibrated Outlet Orifice and Relief Valve. Certification Type Y and Z Models: • Flush (internal) or external mount models • Local visual alarm indicator and dry contact output for remote alarm • Typically recommended for enclosures with volume of 17 Ft3 or less



STANDARD INDUSTRIALI

Type X

Ex [pX] Ex [p]

IECEX SIR.0019X [Gb, Db]

Europe, ATEX Category 2 GD

Cert no Sira 14ATEX1045X

USA/Canada NFPA496 CI I Div 1 Groups A, B, C & D

UL E466718

Type Y

Ex [py] Ex [p]

IECEX SIR.0019X [Gb, Db]

Europe, ATEX Category 2 GD

Cert no Sira 14ATEX1045X

North America CI I Div 1 Groups A, B, C & D

For protecting CI I Div 2 equipment

UL E466718

Type Z

Ex [pz] Ex [p]

IECEX SIR.0019X [Gc, Dc]

Europe, ATEX Category 3 GD

Cert no Sira 14ATEX1045X

North America CI I Div 2 Groups A, B, C & D

UL E466718

CARATTERISTICHE

All exterior components are 316 stainless steel or corrosion-resistant composite

Space-saving flush or exterior mounted models available

Local visual indicators provide system status

Leak compensation models are equipped with rapid purge valve and visual purge status indicator

All models utilize dry, clean inert gas supply of 60 PSI (4 bar) to 115 PSI (8 bar)

Ambient operating temperature -4°F (-20°C) to 131°F (55°C)

Type X models provide automatic purge cycle and 4PNO/20A/440VAC power contactor with 115 VAC or 230 VAC coil

ATTRIBUTI DEL PRODOTTO

Materiale: Acciaio inossidabile 316L

Finitura: Spazzolato

Spessore (T): 3.18mm

Tipo di operazione: Flusso continuo

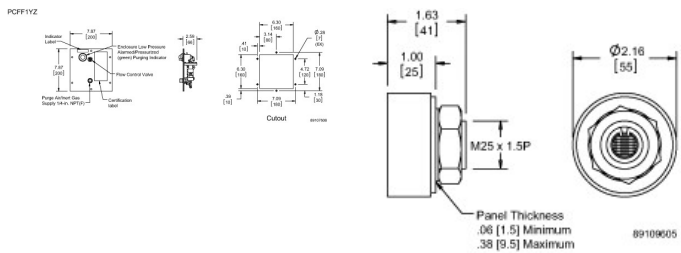
Montaggio: A filo

Dettagli della certificazione: Tipo Y; Tipo Z

INFORMAZIONI DI PRODOTTO AGGIUNTIVE

For all IEC and ATEC applications, the final or complete integrated assembly must be submitted to a notified body for certification.

See Specification Sheet for Purge and Pressurization Systems and Certifications table.



Outlet Orifice for Continuous Flow Models

AVVERTIMENTO

I prodotti nVent devono essere installati e utilizzati solo come indicato nelle schede istruzioni e nei materiali di formazione di nVent. Le schede istruzioni sono disponibili su www.nvent.com e presso il vostro rappresentante del servizio clienti nVent. Un'installazione scorretta, un uso improprio, un'applicazione errata o qualsiasi altro mancato rispetto completo delle istruzioni e degli avvertimenti di nVent può causare malfunzionamenti del prodotto, danni alla proprietà, gravi lesioni personali e morte e/o annullare la vostra garanzia.



Il nostro straordinario portafoglio di marchi:

CADDY ERICO HOFFMAN ILSCO SCHROFF TRACHTE