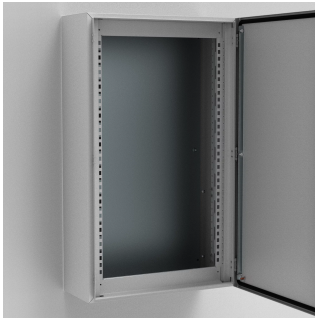


CATALOG NUMBER

MSMSM1006



The mild steel modular system frame for wall mounted enclosures, MSMSM, has two mounting levels. The first is for fixing front panels and the second for mounting equipment. The frame can be equipped before mounting in the enclosure and allows for the use of both modular and non-modular components.

FEATURES

Descrizione: Due profilati verticali singoli, utilizzabili sia per coperture anteriori che per il montaggio di componenti. Una soluzione economica per i quadriisti, che consente di ridurre i tempi di assemblaggio e di eseguire l'assemblaggio anche all'esterno della cassa. L'altezza utile per le coperture anteriori è, Altezza – 100 mm.

Materiale: Acciaio da 1.5 mm.

Finitura: RAL 7035.

Quantità nell'imballaggio: 1 kit.

Specifiche di montaggio: Da assemblare su cassette MAS-ASR.

The frame provides customers with a cost effective solution for small sized power distribution panels

The frame ensures that both modular and non-modular components can be installed into the same enclosure

Customers can assembly the frame outside of the enclosure, if required, which saves installation time as well as labour cost

Pack quantity: 1 kit

PRODUCT ATTRIBUTES

Height: 1000 mm

Width: 600 mm

Material: Mild Steel

Finish: Powder Coated

Color: Light Gray

Color Code: RAL 7035

Thickness: 1.5 mm

WARNING

nVent products shall be installed and used only as indicated in nVent's product instruction sheets and training materials. Instruction sheets are available at www.nvent.com and from your nVent customer service representative. Improper installation, misuse, misapplication or other failure to completely follow nVent's instructions and warnings may cause product malfunction, property damage, serious bodily injury and death and/or void your warranty.



Our powerful portfolio of brands:
nVent.com CADDY ERICO HOFFMAN RAYCHEM SCHROFF
TRACER