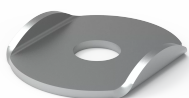


## SUPPORTO FISSAGGIO POST BUSBAR

### CATALOG NUMBER

## MSBF20

This busbar saddle, MSBF, has been tested according to IEC 61439 and is available off the shelf. It is easy to mount and connects two bars with a thickness of 10 mm, to allow for mounting to the vertical busbar support (MSFH).



### FEATURES

Descrizione: Saddle to fix the bars to the rear busbar support, with its special design helps us to fix properly the bars to the support. The bolts, washers and nuts must be ordered separately.

Materiale: 2 mm zinc plated steel.

Fornitura: 20 pieces.

A flexible and reliable solution with a short delivery time, that ensures procurement, design and installation can be done efficiently reducing the labour time required

Nuts, bolts and washers must be ordered separately however, standard ones within the market place are suitable

Saddle to fix the bars to the rear busbar support, with its special design helps us to fix properly the bars to the support

The bolts, washers and nuts must be ordered separately

Package Quantity: 20

### PRODUCT ATTRIBUTES

Height: 40 mm

Width: 34 mm

Depth: 6.4 mm

Material: Steel

Finish: Plated

Color: Unpainted

Thickness: 2 mm

### WARNING

nVent products shall be installed and used only as indicated in nVent's product instruction sheets and training materials. Instruction sheets are available at [www.nvent.com](http://www.nvent.com) and from your nVent customer service representative. Improper installation, misuse, misapplication or other failure to completely follow nVent's instructions and warnings may cause product malfunction,

property damage, serious bodily injury and death and/or void your warranty.



[nVent.com](https://www.nVent.com)

Our powerful portfolio of brands:

**CADDY ERICO HOFFMAN RAYCHEM SCHROFF**

**TRACER**