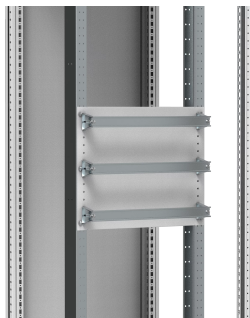


ADATTATORE BARRA DIN FISSAGGIO

CATALOG NUMBER

MSADP10



These brackets, MSADP, allows for easy mounting of DIN rails onto fix system vertical profiles to ensure correct positioning.

FEATURES

Descrizione: Accessory to fix the DIN rail to the MSFP mounting profiles at the proper depth to have the standard distance between the DIN rail and the front panels.

Materiale: Reinforced polyester.

Fornitura: 10 pieces with mounting material.

Plastic brackets, to mount DIN rails to the fixed system vertical profiles (MSFP)

A standard accessory available off the shelf, which allows customers to easily mount DIN rails onto vertical profiles, ensuring modular components are positioned at the correct depth

Ready to use brackets ensure that both procurement and installation can be done efficiently reducing the labour time required

DIN rails must be ordered separately

DIN rails are not required if a slotted front profile has been ordered, as they are included as standard

Mounting Plate Height (mm): 56

PRODUCT ATTRIBUTES

Height: 55 mm

Width: 15 mm

Depth: 65 mm

Material: Polyester

Finish: Smooth

Color: Light Gray

WARNING

nVent products shall be installed and used only as indicated in nVent's product instruction sheets and training materials. Instruction sheets are available at www.nvent.com and from your nVent customer service representative. Improper installation, misuse, misapplication or other failure to completely follow nVent's instructions and warnings may cause product malfunction,

property damage, serious bodily injury and death and/or void your warranty.



[nVent.com](https://www.nVent.com)

Our powerful portfolio of brands:

CADDY ERICO HOFFMAN RAYCHEM SCHROFF

TRACER