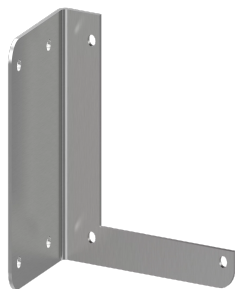


STAFFA DI SUPPORTO, F10: GUIDA CAVI 12 APERTA

CATALOG NUMBER

F44HBSS



Le staffe di supporto passanti in acciaio inox sono utilizzate per supportare una canalina nelle installazioni a parete, a pavimento o a soffitto.

FEATURES

Feed-Through Stainless Steel Bracket Hangers are used for supporting a wireway run in wall, floor or ceiling installations

PRODUCT ATTRIBUTES

Type: Hanger

Height: 102 mm

Width: 102 mm

Material: Stainless Steel 304

Finish: No. 2B

Color: Unpainted

Thickness: 1.59 mm

ADDITIONAL PRODUCT DETAILS

All dimensions are to outside surfaces. Allow .12 in. (3 mm) additional for gasket at joints.

WARNING

nVent products shall be installed and used only as indicated in nVent's product instruction sheets and training materials. Instruction sheets are available at www.nvent.com and from your nVent customer service representative. Improper installation, misuse, misapplication or other failure to completely follow nVent's instructions and warnings may cause product malfunction, property damage, serious bodily injury and death and/or void your warranty.



nVent.com

Our powerful portfolio of brands:

CADDY ERICO HOFFMAN RAYCHEM SCHROFF

TRACER