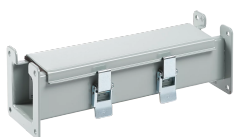


SEZIONE DRITTA DA 12", F10: GUIDA CAVI 12 APERTA

CATALOG NUMBER

F126L12



Lay-in NEMA Type 12 Wireway fittings are used primarily in industrial applications to protect wiring against exposure to oil and other contaminants. This gasketed wireway features quick-release latches for easy access and an opening on one side so wires and cables can be laid in along the entire run without pulling.

INDUSTRY STANDARDS

Certified by Canadian Standards Association.

FEATURES

Lay-in NEMA Type 12 Wireway fittings are used primarily in industrial applications to protect wiring against exposure to oil and other contaminants

This gasketed wireway features quick-release latches for easy access and an opening on one side so wires and cables can be laid in along the entire run without pulling

PRODUCT ATTRIBUTES

Type: Straight Section

Height: 305 mm

Width: 152 mm

Depth: 305 mm

Material: Mild Steel

Finish: Galvanized; Powder Coated

Color: Gray

Color Code: ANSI 61

Thickness: 1.9 mm

Sealing Plate Type: Flat

Sealing Plate Quantity: 1

ADDITIONAL PRODUCT DETAILS

Ciascuna piastra di tenuta include anche una guarnizione e un set di viti per unire le sezioni.

Certificato dalla Canadian Standards Association.

WARNING

nVent products shall be installed and used only as indicated in nVent's product instruction sheets and training materials. Instruction sheets are available at www.nvent.com and from your nVent customer service representative. Improper installation, misuse, misapplication or other failure to completely follow nVent's instructions and warnings may cause product malfunction, property damage, serious bodily injury and death and/or void your warranty.



nVent.com

Our powerful portfolio of brands:

TRACER

CADDY ERICO HOFFMAN RAYCHEM SCHROFF