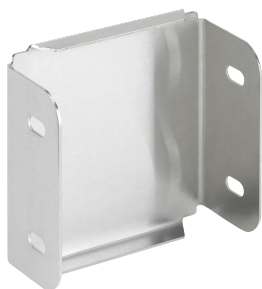


PIASTRA CHIUSURA 4X4 INCL. DX, F23: INOSSIDABILE TIPO 1 WW CLEAN TRAY

CATALOG NUMBER

CTS44CPRSS



Clean Tray Closure Plates are used For closing the end of a Clean Tray run. The Clean Tray stainless steel system is designed to protect rated cabling in applications that require frequent washdown.

FEATURES

Clean Tray Closure Plates are used For closing the end of a Clean Tray run

The Clean Tray stainless steel system is designed to protect rated cabling in applications that require frequent washdown

PRODUCT ATTRIBUTES

Type: Closure Plate

Height (H): 102 mm

Width (W): 102 mm

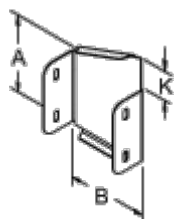
Material: Stainless Steel 304

Color: Unpainted

Thickness (T): 1.27 mm

Finish: Brushed #3

DIAGRAMS



83171374

WARNING

nVent products shall be installed and used only as indicated in nVent's product instruction sheets and training materials. Instruction sheets are available at www.nvent.com and from your nVent customer service representative. Improper installation, misuse, misapplication or other failure to completely follow nVent's instructions and warnings may cause product malfunction, property damage, serious bodily injury and death and/or void your warranty.



nVent.com

Our powerful portfolio of brands:

TRACER

CADDY ERICO HOFFMAN RAYCHEM SCHROFF