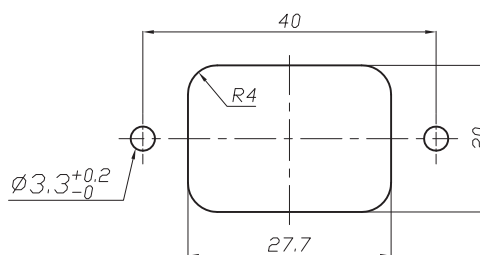
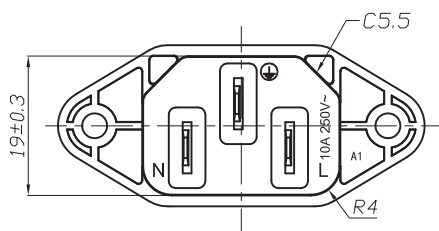
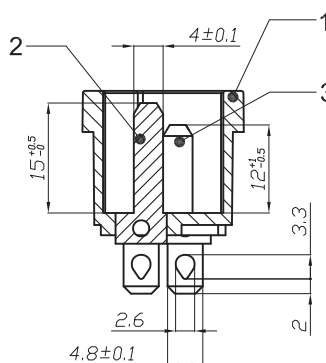
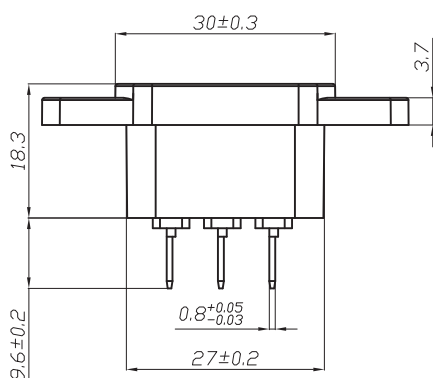
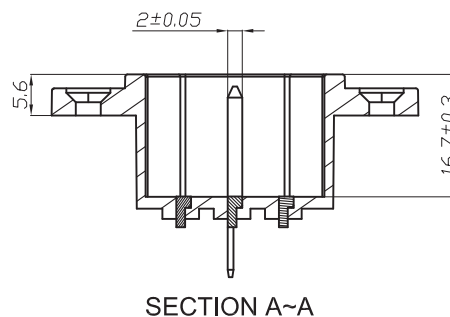
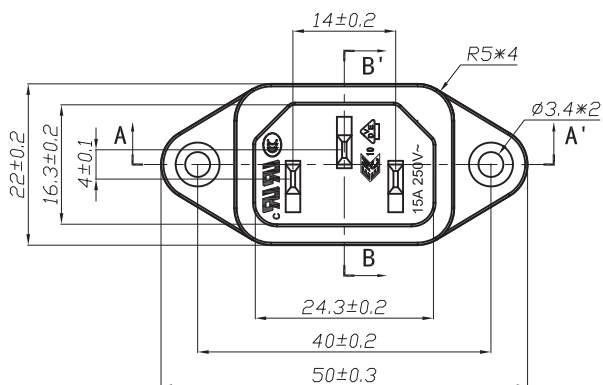


1	Body	1	PA/94V-2
2	Ground terminal	1	Brass Alloy, Tin-Plated
3	Terminal	2	Brass Alloy, Tin-Plated



SPECIFICATION

1. RATING: 10A 250VAC



15A 250VAC cRUus

2. INSULATION RESISTANCE: ≥100MΩ(DC500V/1MIN)

3. DIELECTRIC STRENGTH: 2000V /0.5mA /1MIN

4. OPERATING TEMPERATURE: -25°C TO +85°C(MAX)

5. DIP SOLDERING: 265°C, 3S

PANEL CUT-OUT