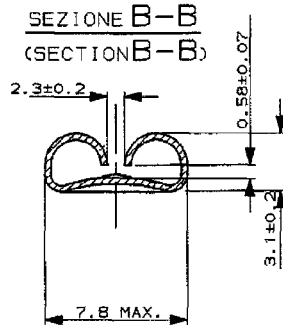
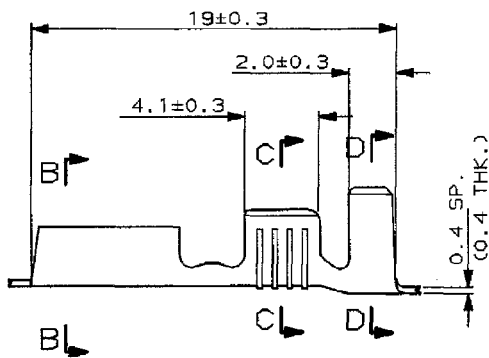


**tyco** Electronics **AMP**

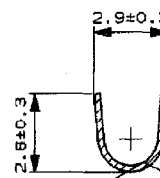
**FEATURES:**

**Product Type:** Receptacle  
**Specials:** Tab Connector  
**Tab Fit (mm [in]):** 6.35 x 0.81 [.250 x 0.32]  
**Receptacle Support:** Straight  
**Insuration Support:** Insuration Support  
**Wire/Cable Type:** Regular Wire  
**Wire Range (mm [AWG]):** 0.30-0.80<sup>2</sup>  
**Insulation Diameter (mm [in]):** 2.30-3.30 [.090-.129]

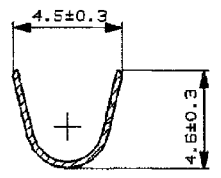
**Insertion Force:** Low  
**Material:** Brass  
**Finish:** Tin  
**Line:** FASTON 250  
**Crimp Type:** "F"  
**Packaging:** Strip  
**Method:** Form



SEZIONE C-C  
(SECTION C-C)

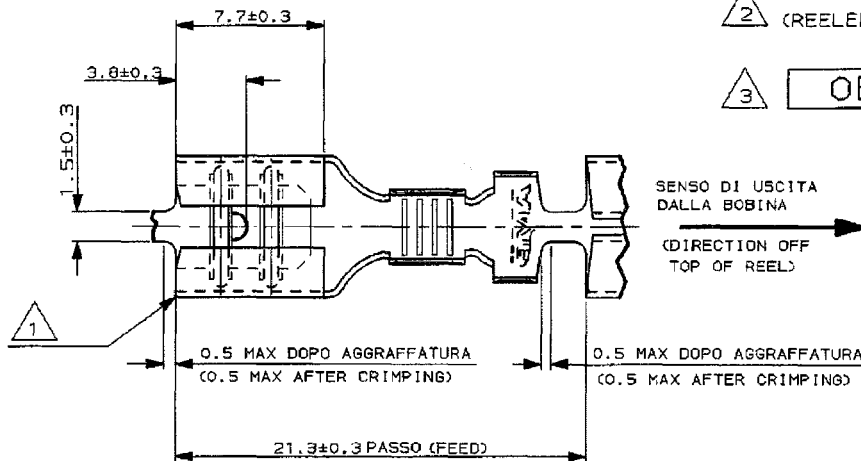


SEZIONE D-D  
(SECTION D-D)



NOTE

- 1 SENZA SMUSSO (WITHOUT CHAMFER)
- 2 BOBINATI SU BOBINA SPECIALE (7000 PEZZI/BOBINA)  
(REELED ON SPECIAL REEL (7000 PCS/REEL))
- 3 **OBSOLETE**



STATO DI FORNITURA -SCALA 1:1  
(SUPPLYING CONDITION -SCALE 1:1-)



-	1	NUDO (UNPLATED)	OTTONE (BRASS)	280000-7
-	1	STAGNATO (TIN PLTD)	OTTONE (BRASS)	280000-6
-	1	NUDO (UNPLATED)	OTTONE (BRASS)	280000-5
181902-4	1	STAGNATO (TIN PLTD)	BRONZO FOSFOROSO (PH. BRONZE)	280000-4
181902-3	1	NUDO (UNPLATED)	BRONZO FOSFOROSO (PH. BRONZE)	280000-3
181902-1	1	STAGNATO (TIN PLTD)	OTTONE (BRASS)	280000-1

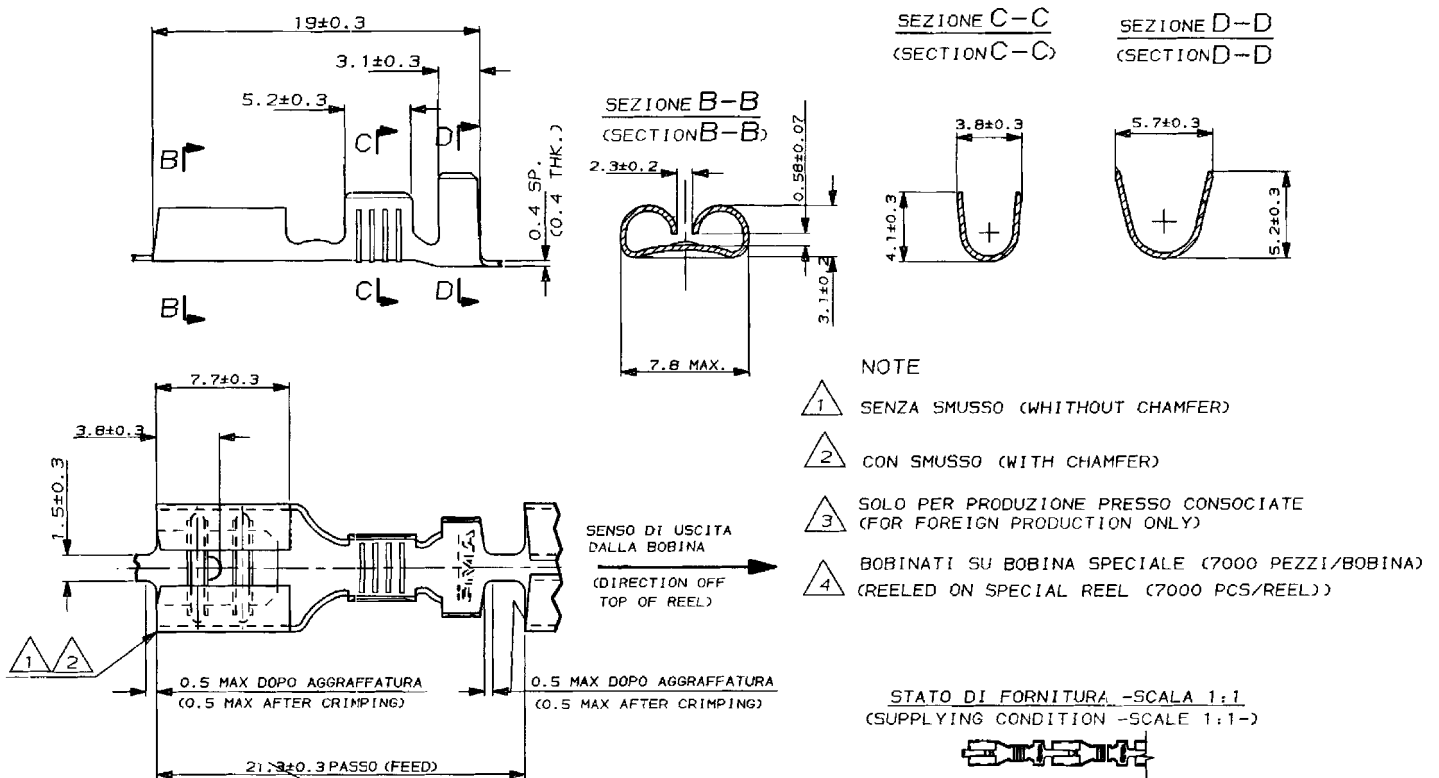
98/72198

98/73222



### FEATURES:

<b>Product Type:</b>	Receptacle	<b>Insulation Diameter (mm [in]):</b>	3.00-4.29 [.0118-.16]
<b>Specials:</b>	For Posted Hermethic Tabs	<b>Insertion Force:</b>	Normal
<b>Tab Fit (mm [in]):</b>	6.35 [.250] Series	<b>Material:</b>	Bronze
<b>Receptacle Support:</b>	Straight	<b>Finish:</b>	none
<b>Insulation Support:</b>	Insulation Support	<b>Line:</b>	Premier
<b>Wire/Cable Type:</b>	Regular Wire	<b>Crimp Type:</b>	"F"
<b>Wire Range (mm [AWG]):</b>	1.30-2.50 <sup>2</sup>		



98/73180

-	1	4	NUDO (UNPLATED)	OTTONE (BRASS)	1-280001-0
-	1	4	STAGNATO (TIN PLTD)	OTTONE (BRASS)	280001-9
-	1	4	NUDO (UNPLATED)	OTTONE (BRASS)	280001-8
181903-7	1	4	STAGNATO (TIN PLTD)	BRONZO FOSFOROSO (PH. BRONZE)	280001-7
181903-6	1	3	NUDO (UNPLATED)	BRONZO FOSFOROSO (PH. BRONZE)	280001-6
181903-5	2	3	STAGNATO (TIN PLTD)	OTTONE (BRASS)	280001-5
181903-4	2	3	NUDO (UNPLATED)	OTTONE (BRASS)	280001-4
181903-1	1	4	STAGNATO (TIN PLTD)	OTTONE (BRASS)	280001-1

98/73202