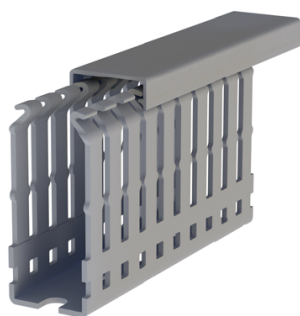




WD WIRING DUCT



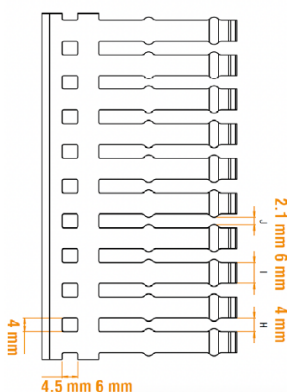
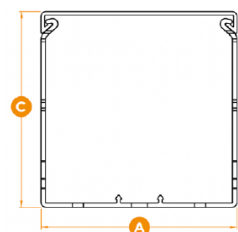
PVC Wiring Ducts with additional holes

PVC wiring ducts with additional holes are designed to offer a great flexibility in your panel design and to save installation time.

Features & specifications

- Can be used with cable tie thanks to additional holes on the sides
- Flame-retardant, self-extinguishing according to UL94-V0
- Upper scoreline is available for easy breaking off the ribs
- Lower scoreline at base of sidewall allow cutting out and removing sections of sidewall with no sharp edges
- Operating temperature: -5°C to 60°C
- Standard length: 2 meters
- Color: RAL 7030 Grey
- Complies with RoHS regulations
- Complies with IEC 60695-2-1 and EN 50085-2-3 standards

Product ordering information



Size Width (A) x Height (C)		Type	Part Number	Packing Qty	
mm	in				
25 x 30	0.98 x 1.18	WD-1-DP-GR2530	1SET411008R0000	50 x 2 m (78.74 in)	25/12000-00
25 x 40	0.98 x 1.57	WD-1-DP-GR2540	1SET411009R0000	50 x 2 m (78.74 in)	25/12005-00
25 x 60	0.98 x 2.36	WD-1-DP-GR2560	1SET411010R0000	30 x 2 m (78.74 in)	25/12010-00
25 x 80	0.98 x 3.15	WD-1-DP-GR2580	1SET411011R0000	28 x 2 m (78.74 in)	25/12015-00
25 x 100	0.98 x 3.94	WD-1-DP-GR2510	1SET411007R0000	22 x 2 m (78.74 in)	25/12018-00
40 x 40	1.57 x 1.57	WD-1-DP-GR4040	1SET411013R0000	26 x 2 m (78.74 in)	25/12020-00
40 x 60	1.57 x 2.36	WD-1-DP-GR4060	1SET411014R0000	18 x 2 m (78.74 in)	25/12025-00
40 x 80	1.57 x 3.15	WD-1-DP-GR4080	1SET411015R0000	20 x 2 m (78.74 in)	25/12030-00
40 x 100	1.57 x 3.94	WD-1-DP-GR4010	1SET411012R0000	14 x 2 m (78.74 in)	25/12035-00
60 x 40	2.36 x 1.57	WD-1-DP-GR6040	1SET411017R0000	18 x 2 m (78.74 in)	25/12040-00
60 x 60	2.36 x 2.36	WD-1-DP-GR6060	1SET411018R0000	12 x 2 m (78.74 in)	25/12045-00
60 x 80	2.36 x 3.15	WD-1-DP-GR6080	1SET411019R0000	12 x 2 m (78.74 in)	25/12050-00
60 x 100	2.36 x 3.94	WD-1-DP-GR6010	1SET411016R0000	18 x 2 m (78.74 in)	25/12055-00
80 x 40	3.15 x 1.57	WD-1-DP-GR8040	1SET411021R0000	18 x 2 m (78.74 in)	25/12060-00
80 x 60	3.15 x 2.36	WD-1-DP-GR8060	1SET411022R0000	14 x 2 m (78.74 in)	25/12065-00
80 x 80	3.15 x 3.15	WD-1-DP-GR8080	1SET411023R0000	10 x 2 m (78.74 in)	25/12070-00
80 x 100	3.15 x 3.94	WD-1-DP-GR8010	1SET411020R0000	12 x 2 m (78.74 in)	25/12075-00
100 x 60	3.94 x 2.36	WD-1-DP-GR1006	1SET411002R0000	10 x 2 m (78.74 in)	25/12080-00
100 x 80	3.94 x 3.15	WD-1-DP-GR1008	1SET411003R0000	8 x 2 m (78.74 in)	25/12085-00
100 x 100	3.94 x 3.94	WD-1-DP-GR1001	1SET411001R0000	12 x 2 m (78.74 in)	25/12090-00
120 x 60	4.72 x 2.36	WD-1-DP-GR1206	1SET411005R0000	8 x 2 m (78.74 in)	25/12100-00
120 x 80	4.72 x 3.15	WD-1-DP-GR1208	1SET411006R0000	6 x 2 m (78.74 in)	25/12105-00
120 x 100	4.72 x 3.94	WD-1-DP-GR1201	1SET411004R0000	10 x 2 m (78.74 in)	25/12110-00

Note: Covers are included in the wiring duct packaging