

BC Industrial HRC fuse links



Product description

Eaton's Bussmann® series BC British standard fuse links are specifically designed for the protection of general industrial applications e.g. power distribution, cable protection, motor protection.

Standard features

- Good peak let-through current limitation
- 1:1:6 Selective coordination ratio between 'minor' and 'major' fuse
- gG characteristics for cable protection and general purpose applications
- Power loss values within the limits of IEC 60269 -2

Catalogue symbol

- BC(Amps)

Technical data

Rated voltage: 500 V a.c. / 250 V d.c.

Rated current: 40 to 63 A

Breaking range and utilisation category: gG / gM

Breaking capacity: 80 kA a.c. / 40 kA d.c.

Standards/approvals

- BS88-1
- IEC 60269-1
- Suitable for use in RoHS compliant applications

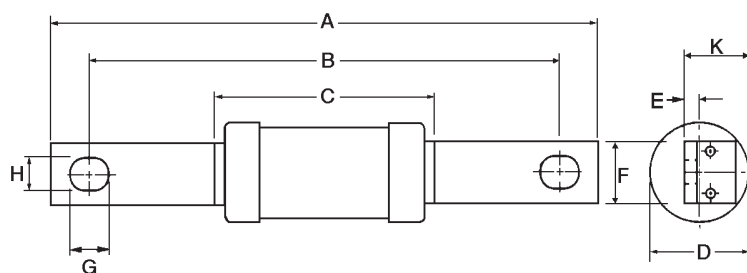
Packaging

- MOQ 20

Table 1. Technical data

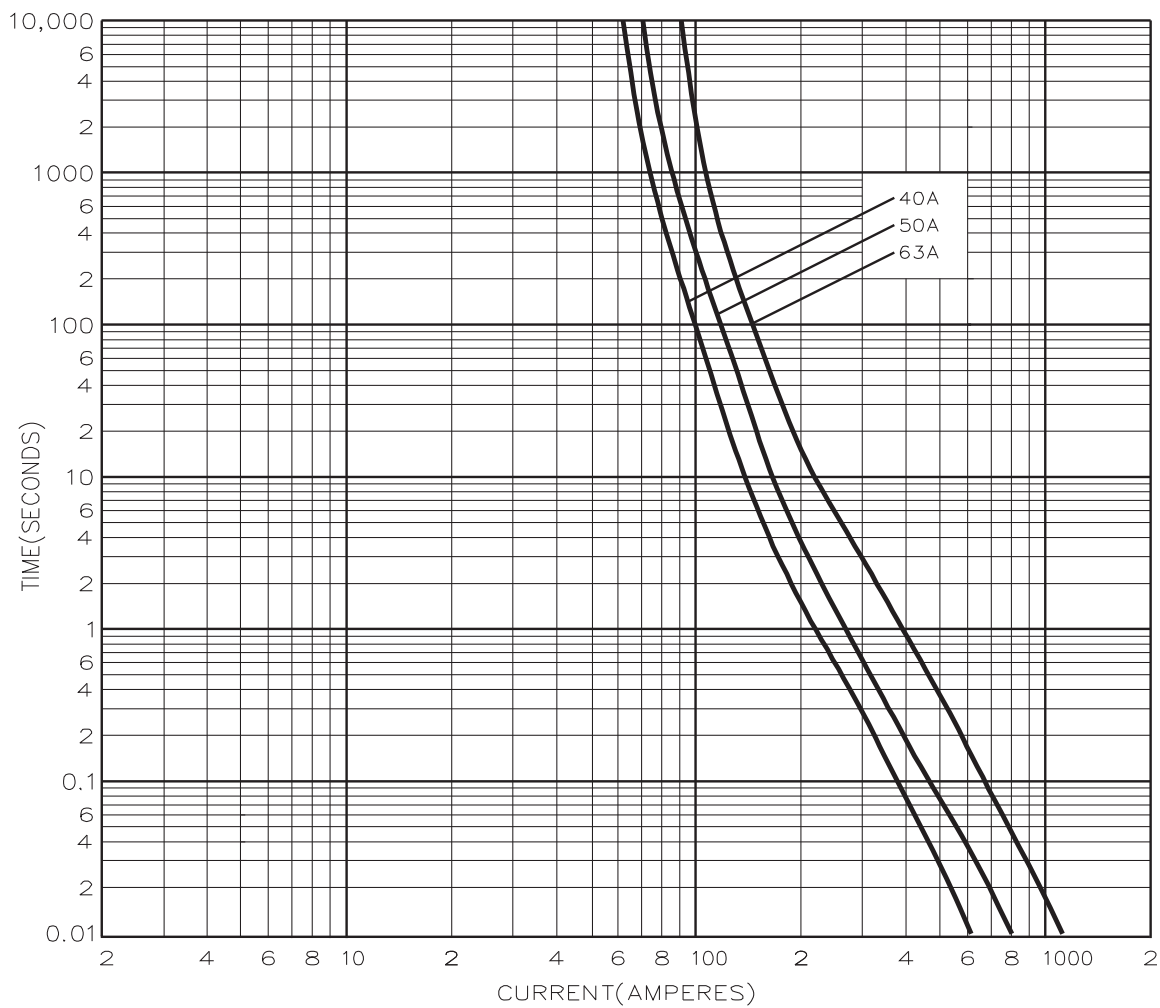
Catalogue number	Rated voltage	Rated current (Amps)	Breaking capacity	Energy integrals I ² t (A ² S)			Watts loss (W)	Product class	Weight (grams)
				Pre-arcing	Total at 415 V a.c.	Total at 550 V a.c.			
BC40	500 V a.c. / 250 V d.c.	40	80 kA at 500 V a.c. 40 kA at 250 V d.c.	1400	3600	5000	4.7	gG	55
BC50	500 V a.c. / 250 V d.c.	50		3000	8050	11250	4.9	gG	55
BC63	500 V a.c. / 250 V d.c.	63		6700	18850	25100	5.6	gG	55
BC63M80	500 V a.c. / 250 V d.c.	63M80	80 kA at 500 V a.c. 40 kA at 250 V d.c.	12600	33900	50000	4.4	gM	55
BC63M100	500 V a.c. / 250 V d.c.	63M100		24000	72900	90000	3.4	gM	55

Dimensions - mm

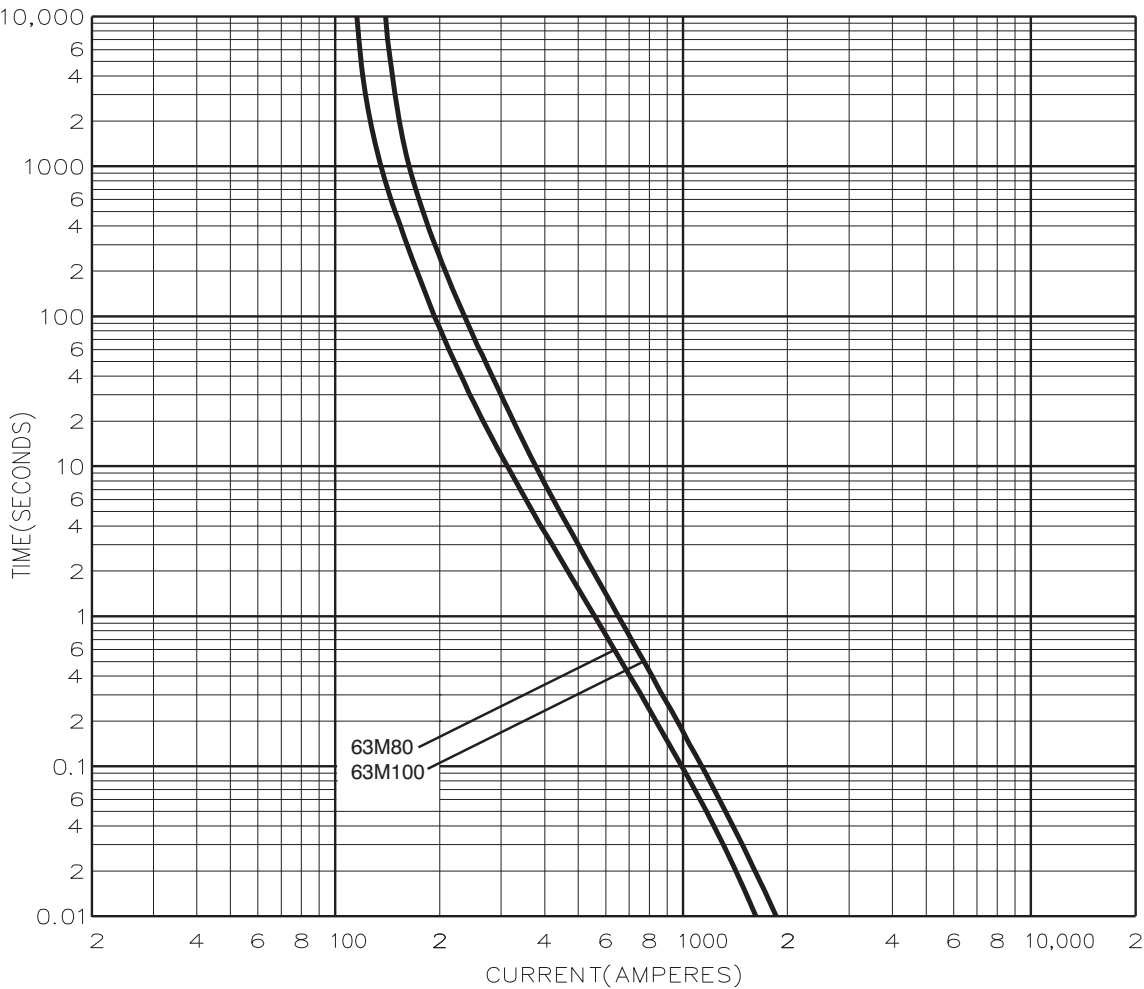


Catalogue numbers	A	B	C	D	E	F	G	H	K
BC40-63 and BC63M80-100	113.5	97	55	21	1.6	7	13.5	12.7	11.2

Time-current characteristic curve - non motor rated



Time-current characteristic curve - motor rated



Changes to the products, to the information contained in this document, and to prices are reserved; so are errors and omissions. Only order confirmations and technical documentation by Eaton is binding. Photos and pictures also do not warrant a specific layout or functionality. Their use in whatever form is subject to prior approval by Eaton. The same applies to Trademarks (especially Eaton, Moeller, and Cutler-Hammer). The Terms and Conditions of Eaton apply, as referenced on Eaton Internet pages and Eaton order confirmations.

Eaton
EMEA Headquarters
Route de la Longeraie 7
1110 Morges, Switzerland

Eaton Electrical Products Limited
Melton Road
Burton-on-the-Wolds
Leicestershire, LE12 5TH
United Kingdom

© 2017 Eaton
All Rights Reserved
PDF Only
Publication No. 4113
October 2017