

# R20 BS88 Special tags fuse links

## Product description

Eaton's Bussmann® series R20 British Standard fuse links are specifically designed for the protection of general industrial applications e.g. power distribution and cable protection.

## Standard features

- Good peak let-through current limitation
- 1:1:6 Selective coordination ratio between "minor" and "major" fuse
- gG characteristics for cable protection and general purpose applications
- Power loss values well within the limits of IEC 60269-2



*Powering Business Worldwide*

**Catalogue symbol:**

- (amps)R20

**Technical data:**

- Rated voltage: 690 V a.c. / 400 V d.c.
- Rated current: 450 to 630 A
- Breaking capacity: 80 kA a.c. / 40 kA d.c.
- Breaking range and utilisation category: gG

**Standards/approvals:**

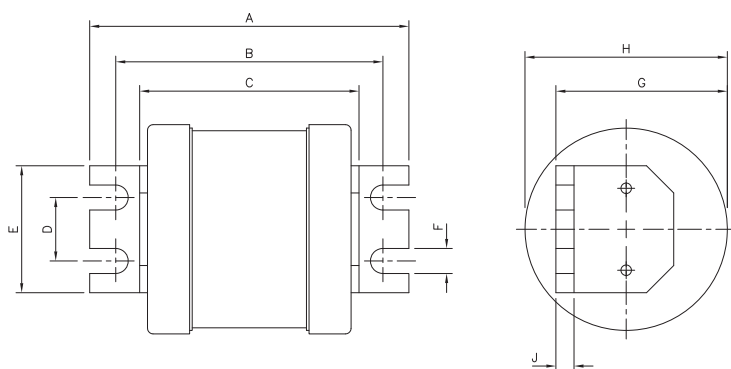
- BS88-1
- IEC 60269-1
- RoHS compliant

**Packaging:**

- MOQ: 1

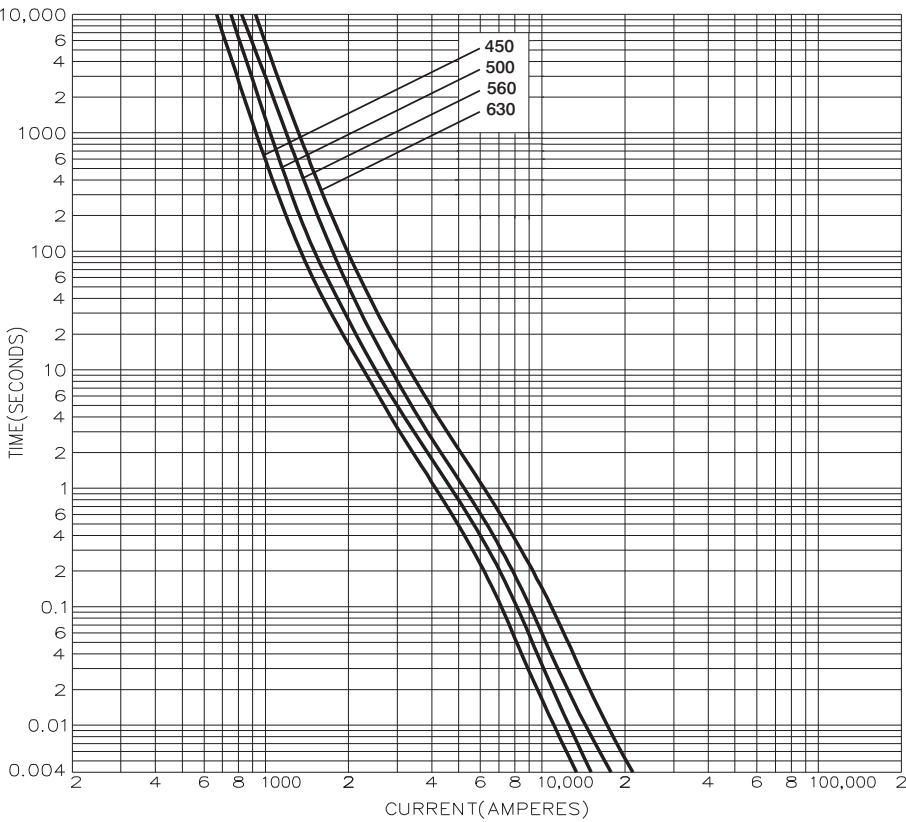
**Table 1. Technical data**

Part number	Rated voltage	Rated current (Amps)	Energy integrals $I^2t$ (A <sup>2</sup> S)				Watts loss	Product Class
			Pre-arcing	Total at 415V	Total at 550V	Total at 660V	W	
450R20	690 V a.c. / 400 V d.c.	450	880,000	1,600,000	2,200,000	4,400,000	32	gG
500R20	690 V a.c. / 400 V d.c.	500	1,100,000	2,000,000	2,800,000	5,500,000	38	gG
560R20	690 V a.c. / 400 V d.c.	560	1,400,000	2,400,000	3,500,000	6,800,000	43	gG
630R20	690 V a.c. / 400 V d.c.	630	2,000,000	3,500,000	5,000,000	9,900,000	50	gG

**Dimensions - mm**


Catalogue numbers	A	B	C	D	E	F	G	H	J
450-630R20	112	94	77	22	44.5	8.8	62	74	6.4

Time current curve



Changes to the products, to the information contained in this document, and to prices are reserved; so are errors and omissions. Only order confirmations and technical documentation by Eaton is binding. Photos and pictures also do not warrant a specific layout or functionality. Their use in whatever form is subject to prior approval by Eaton. The same applies to Trademarks (especially Eaton, Moeller, and Cutler-Hammer). The Terms and Conditions of Eaton apply, as referenced on Eaton Internet pages and Eaton order confirmations.

**Eaton**  
EMEA Headquarters  
Route de la Longeraie 7  
1110 Morges, Switzerland  
  
Eaton Electrical Products Limited  
Melton Road  
Burton-on-the-Wolds  
Leicestershire, LE12 5TH  
United Kingdom

© 2017 Eaton  
All Rights Reserved  
PDF Only  
Publication No. 4168  
October 2017