

# P20 BS88 Special tags fuse links

## Product description

Eaton's Bussmann® series P20 British Standard fuse links are specifically designed for the protection of general industrial applications e.g. power distribution and cable protection.

## Standard features

- Good peak let-through current limitation
- 1:1:6 Selective coordination ratio between "minor" and "major" fuse
- gG characteristics for cable protection and general purpose applications
- Power loss values well within the limits of IEC 60269-2



*Powering Business Worldwide*

**Catalogue symbol:**

- 355P20
- 400P20

**Technical data:**

- Rated voltage: 690 V a.c. / 400 V d.c.
- Rated current: 355 and 400 A
- Breaking capacity: 80 kA a.c. / 40 kA d.c.
- Breaking range and utilisation category: gG

**Standards/approvals:**

- BS88-1
- IEC 60269-1
- RoHS compliant

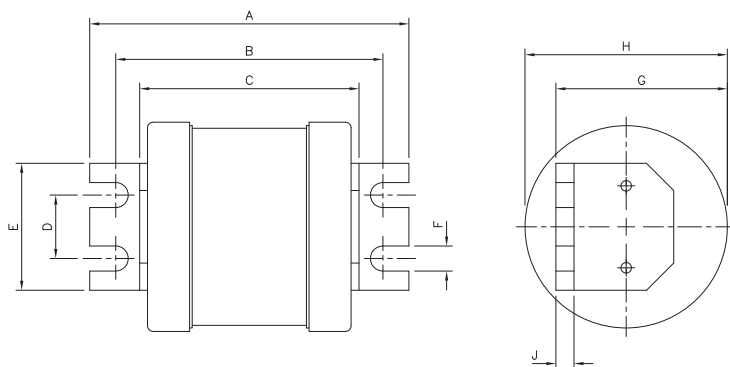
**Packaging:**

- MOQ: 1

**Table 1. Technical data**

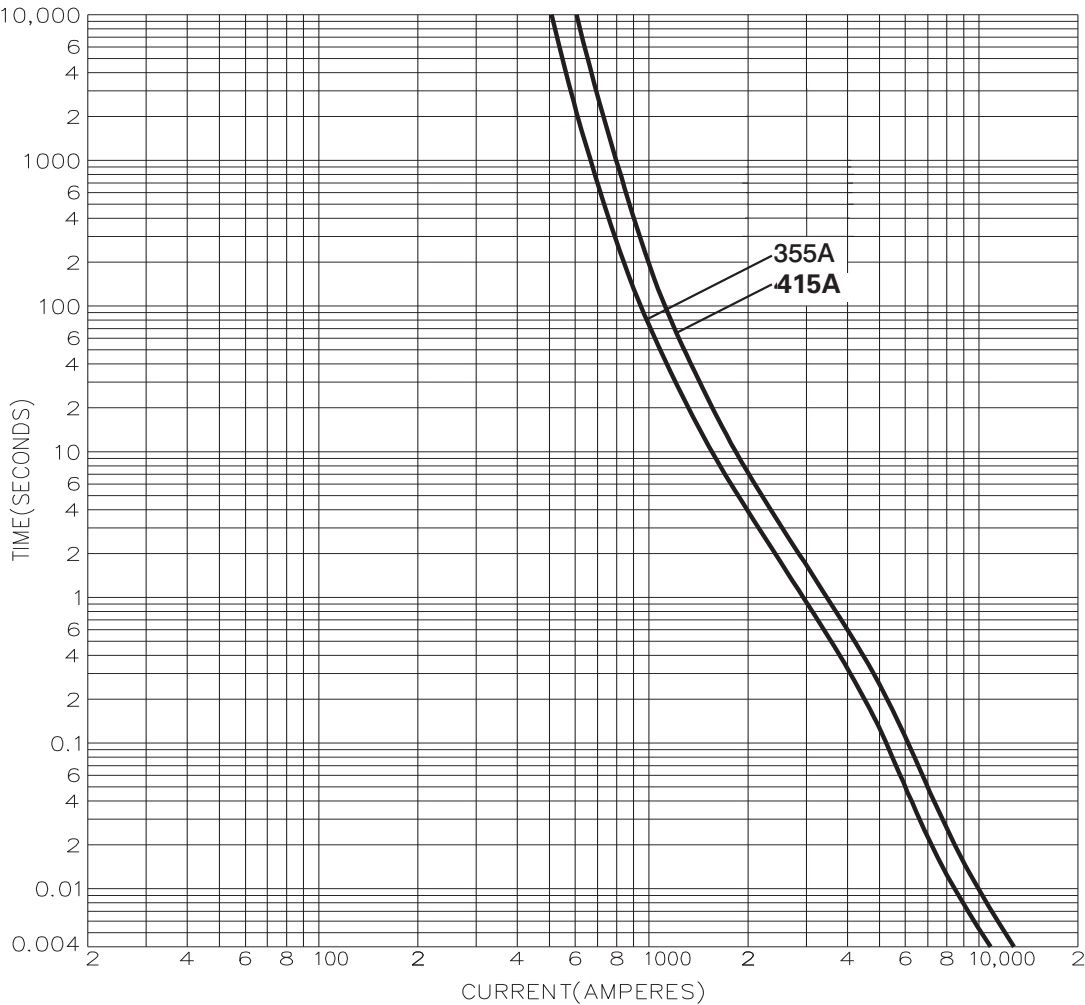
Part number	Rated voltage	Rated current (Amps)	Energy integrals I <sup>2</sup> t (A <sup>2</sup> S)				Watts loss	Product Class
			Pre-arcing	Total at 415V	Total at 550V	Total at 660V	W	
355P20	690 V a.c. / 400 V d.c.	355	490,000	870,000	1,250,000	2,450,000	28	gG
400P20	690 V a.c. / 400 V d.c.	400	670,000	1,200,000	1,700,000	3,350,000	32	gG

**Dimensions - mm**



Catalogue numbers	A	B	C	D	E	F	G	H	J
355 and 400P20	111	94	76	22	45	9	47	59	6

Time current curve



Changes to the products, to the information contained in this document, and to prices are reserved; so are errors and omissions. Only order confirmations and technical documentation by Eaton is binding. Photos and pictures also do not warrant a specific layout or functionality. Their use in whatever form is subject to prior approval by Eaton. The same applies to Trademarks (especially Eaton, Moeller, and Cutler-Hammer). The Terms and Conditions of Eaton apply, as referenced on Eaton Internet pages and Eaton order confirmations.

**Eaton**  
EMEA Headquarters  
Route de la Longeraie 7  
1110 Morges, Switzerland

Eaton Electrical Products Limited  
Melton Road  
Burton-on-the-Wolds  
Leicestershire, LE12 5TH  
United Kingdom

© 2017 Eaton  
All Rights Reserved  
PDF Only  
Publication No. 4167  
October 2017