

P35 BS88 Offset bolted tags fuse links

Product description

Eaton's Bussmann® series P35 British Standard fuse links are specifically designed for the protection of general industrial applications e.g. power distribution and cable protection up to 690 V a.c.

Standard features

- Good peak let-through current limitation
- 1:1:6 Selective coordination ratio between "minor" and "major" fuse
- gG characteristics for cable protection and general purpose applications
- Power loss values well within the limits of IEC 60269-2



Powering Business Worldwide

Catalogue Symbol:

- 355P35
- 400P35

Technical data:

- Rated voltage: 690 V a.c. / 400 V d.c.
- Rated current: 355 and 400 A
- Breaking capacity: 80 kA a.c. / 40 kA d.c.
- Breaking range and utilisation category: gG

Standards/Approvals:

- BS88-1
- IEC 60269-1
- RoHS compliant

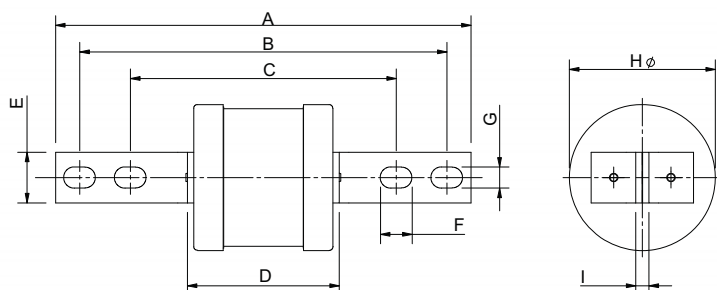
Packaging:

- MOQ: 1

Table 1. Technical Data

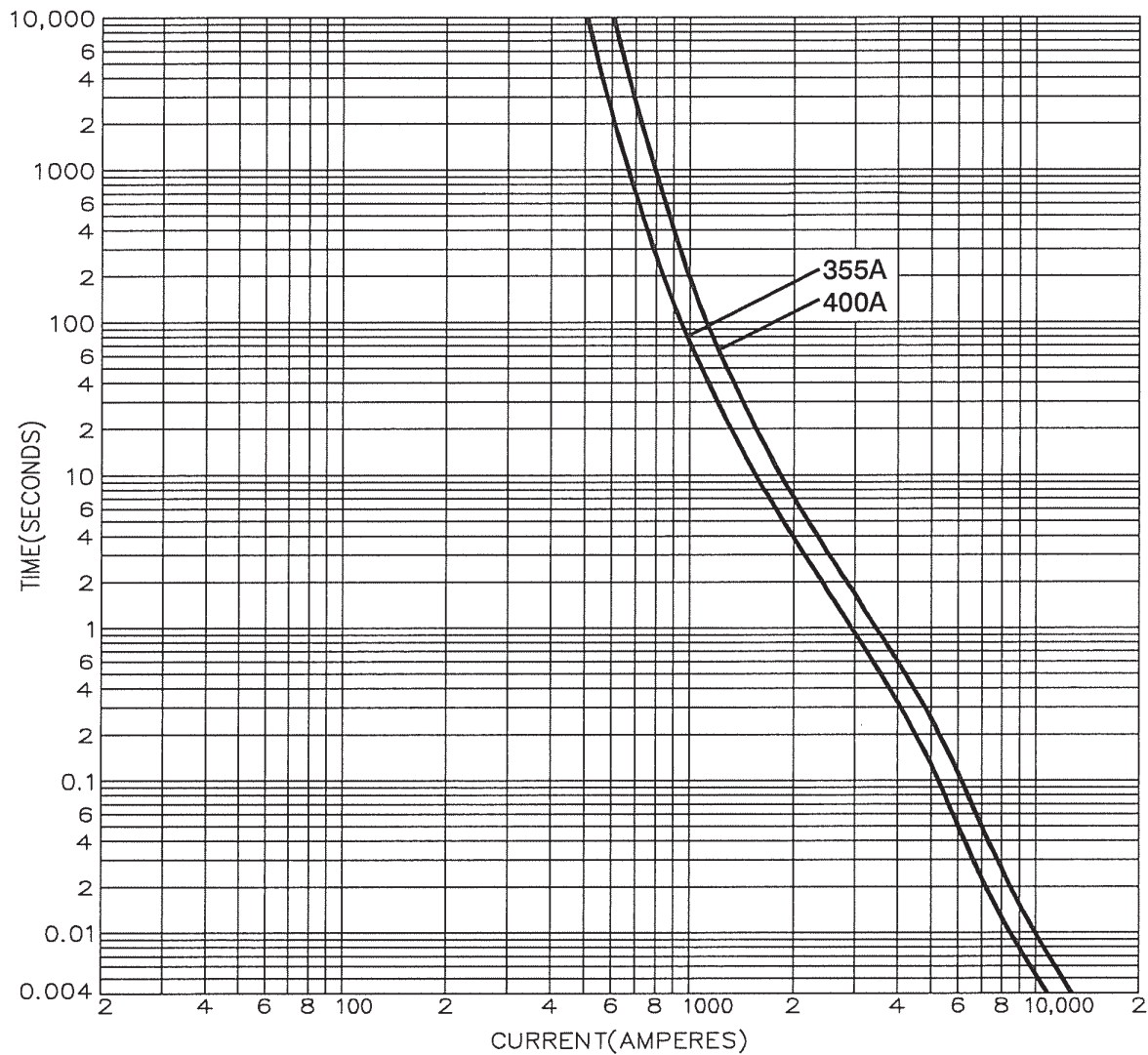
Part number	Rated voltage	Rated current (Amps)	Energy integrals I ² t (A ² S)				Watts loss	Product Class	Weight
			Pre-arcing	Total at 415V	Total at 550V	Total at 660V			
355P35	690 V a.c./ 400 V d.c.	355	490,000	870,000	1,250,000	2,450,000	28	gG	640g
400P35	690 V a.c./ 400 V d.c.	400	670,000	1,200,000	1,700,000	3,350,000	32	gG	640g

Dimensions - mm



Catalogue numbers	A	B	C	D	E	F	G	H	I
355 and 400P35	210	184	133	75	19	16	11	59	4.7

Time current curve



Changes to the products, to the information contained in this document, and to prices are reserved; so are errors and omissions. Only order confirmations and technical documentation by Eaton is binding. Photos and pictures also do not warrant a specific layout or functionality. Their use in whatever form is subject to prior approval by Eaton. The same applies to Trademarks (especially Eaton, Moeller, and Cutler-Hammer). The Terms and Conditions of Eaton apply, as referenced on Eaton Internet pages and Eaton order confirmations.

Eaton
EMEA Headquarters
Route de la Longeraie 7
1110 Morges, Switzerland

Eaton Electrical Products Limited
Melton Road
Burton-on-the-Wolds
Leicestershire, LE12 5TH
United Kingdom

© 2017 Eaton
All Rights Reserved
PDF Only
Publication No. 4161
October 2017