

M13-M23 Offset bolted tags fuse links



Product description

Eaton's Bussmann® series M13-M23 fuse links are specifically designed for the protection of large industrial installations up to 690 V a.c.

Standard features

- Good peak let-through current limitation
- 1:1:6 Selective coordination ratio between "minor" and "major" fuse
- gG characteristics for cable protection and general purpose applications
- Power loss values well within the limits of IEC 60269-2

Catalogue Symbol:

- (Amps)M13
- (Amps)M23

Technical data:

- Rated voltage: 690 V a.c. / 400 V d.c.
- Rated current: 125 to 200 A
- Breaking capacity: 80 kA a.c. / 40 kA d.c.
- Breaking range and utilisation category: gG

Standards/Approvals:

- BS88-1
- IEC 60269-1
- Suitable for use in RoHS compliant applications

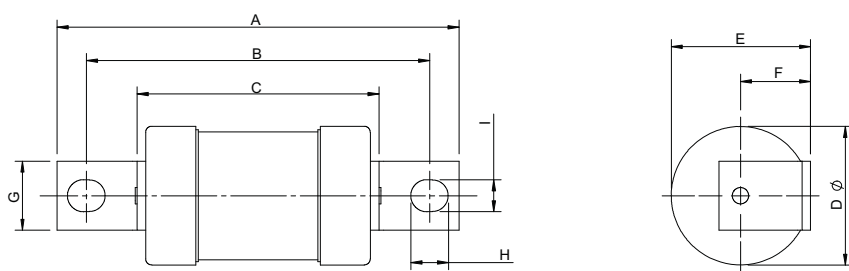
Packaging:

- MOQ: 5 (M13)/ 1 (M23)

Table 1. Technical Data

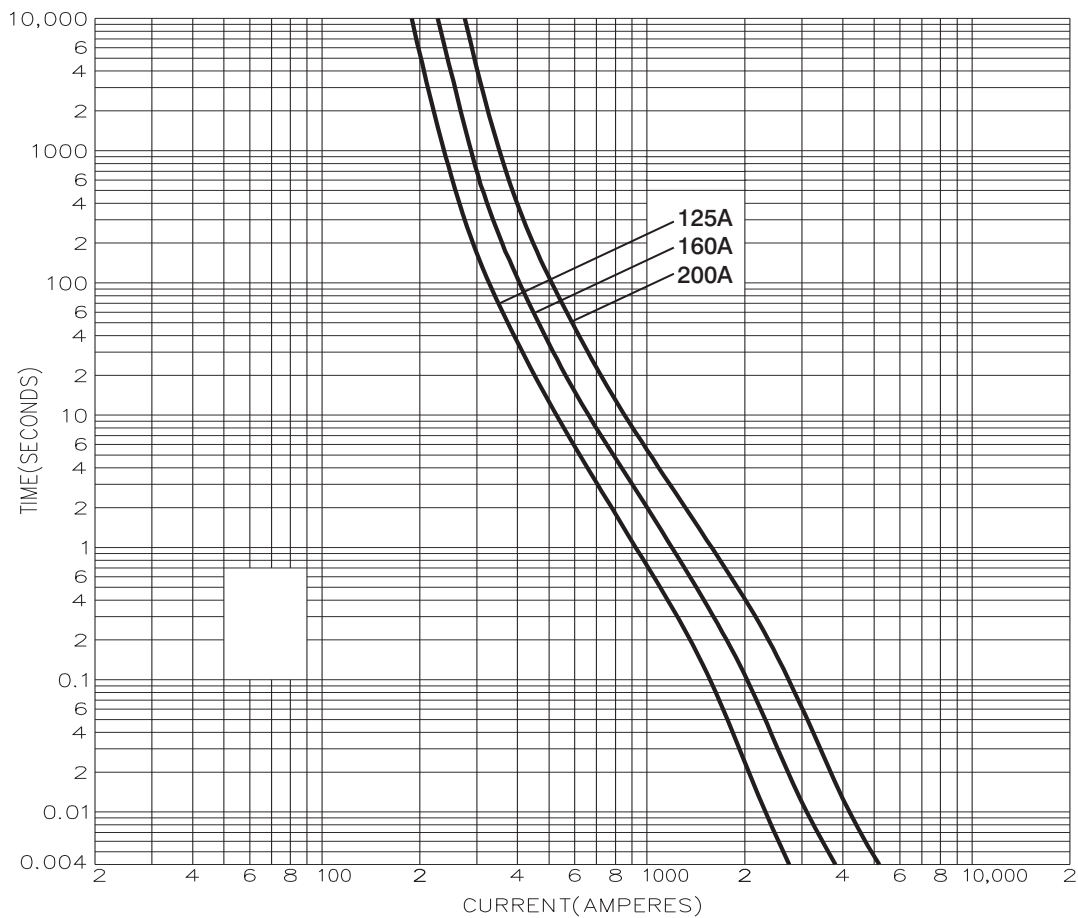
Part number	Rated voltage	Rated current (Amps)	Energy integrals I ² t (A ² S)			Watts loss		Product Class
			Pre-arcing	Total at 415V	Total at 550V	Total at 660V	W	
125M13	690 V a.c. / 400 V d.c.	125	33,000	59,000	84,000	165,000	10	gG
160M13	690 V a.c. / 400 V d.c.	160	67,000	120,000	170,000	335,000	13	gG
200M13	690 V a.c. / 400 V d.c.	200	120,000	210,000	300,000	590,000	16	gG
125M23	690 V a.c. / 400 V d.c.	125	33,000	59,000	84,000	165,000	10	gG
160M23	690 V a.c. / 400 V d.c.	160	67,000	120,000	170,000	335,000	13	gG
200M23	690 V a.c. / 400 V d.c.	200	120,000	210,000	300,000	590,000	16	gG

Dimensions - mm



Catalogue numbers	A	B	C	D	E	F	G	H	I
125-200M13	120	99	70	38	27	8	25	12	9
125-200M23	145	115	67	38	39	19	26	14	9

Time current curve



Changes to the products, to the information contained in this document, and to prices are reserved; so are errors and omissions. Only order confirmations and technical documentation by Eaton is binding. Photos and pictures also do not warrant a specific layout or functionality. Their use in whatever form is subject to prior approval by Eaton. The same applies to Trademarks (especially Eaton, Moeller, and Cutler-Hammer). The Terms and Conditions of Eaton apply, as referenced on Eaton Internet pages and Eaton order confirmations.

Eaton
EMEA Headquarters
Route de la Longeraie 7
1110 Morges, Switzerland

Eaton Electrical Products Limited
Melton Road
Burton-on-the-Wolds
Leicestershire, LE12 5TH
United Kingdom

© 2017 Eaton
All Rights Reserved
PDF Only
Publication No. 4163
October 2017