



- Latest generation LED light source
- 100, 150 and 250lm output flux
- 1h and 3h duration
- Complete recharge in 12h for 1h models
- Compact dimensions: 290x110x40mm

Light Source:

LED strip

Material:

Base and reflector
white polycarbonate

Diffuser clear polycarbonate

Protection degree IP40 and

IP65 with the accessory kit

Ni-Cd battery

Operation:

Maintained and
Non-Maintained mode

Fixed 60lm output in
Maintained mode for all variants
for high energy saving

1h and 3h duration

Rest Mode and Tests via
remote command

12h recharge period
(24h for 3h versions)

Applications:

Schools, universities,
commercial centers,
stores, offices, public
administration and all indoor
generic environments

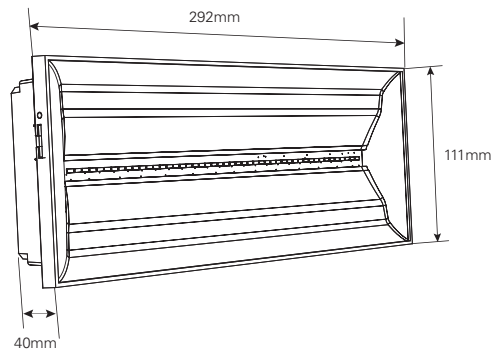
Safety antipanic lighting
and escape route lighting

Exit sign with single and
double side signalization

NexiLite is a range of anti-panic and escape route luminaires that can also be used as an exit sign by purchasing optional sets of pictograms (Conforms to ISO7010). The low profile housings are available in two IP rating options (IP40 & IP65) making NexiLite luminaires suitable for indoor or more industrial applications.

With its compact and modern design, NexiLite can be used in any architectural context. The wide range of accessories allows installation on a wall or ceiling, surface or recessed.

This range of LED stand-alone self-contained luminaires is composed of maintained and non-maintained variants, 1h and 3h duration versions, from 100lm up to 250lm light output.



The right accessory at the right time

NexiLite is equipped with a wide range of accessories to meet any installation requirement.

The standard versions, with degree of protection IP40 are suitable to be installed indoors, but thanks to the IP65 kit are transformed into outdoor luminaires for use in wet and dusty environments.

For escape sign lighting, NexiLite is equipped with a series of single side pictograms and double side panels in accordance with International Standard ISO7010 with visibility distance of 20 and 30m (EN1838).

NexiLite's single side pictograms are different from those adhesives commonly used since are positioned between the reflector and the diffuser, are free of glue and can be repositioned as desired without the formation of unsightly defects.



NexiLite LED with IP65 protection kit

The IP65 kit is compatible with all the variants.
Only surface mounting. Dimension 308x125x53 mm

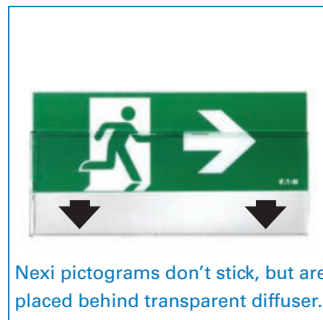


With double-side pictograms



Viewing distance: 20 or 30m

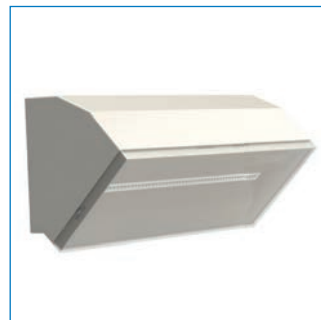
With single-side pictograms



Nexi pictograms don't stick, but are placed behind transparent diffuser.

Viewing distance: 20m

45° Wall Bracket (IP40/IP65)








Light the floor from the wall

NexiTech LED frame



All NexiTech LED accessories are usable with NexiLite luminaires

| Order code | Description |  |  |  |  |  |
|------------|------------------------|---|---|--|---|---|
| NXL100 | NexiLite 100Lm 1h NM | 1.5 W | 100 Lm | 1h | 3.6V - 0.8Ah Ni-Cd | Non-Maintained |
| NXL150 | NexiLite 150Lm 1h NM | 1.5 W | 150 Lm | 1h | 3.6V - 0.8Ah Ni-Cd | Non-Maintained |
| NXL250 | NexiLite 250Lm 1h NM | 1.8 W | 250 Lm | 1h | 3.6V - 1.7Ah Ni-Cd | Non-Maintained |
| NXL150-3H | NexiLite 150Lm 3h M | 3.1 W | 150 Lm | 3h | 3.6V - 2.0Ah Ni-Cd | Maintained / Non-Maintained |
| NXL250-3H | NexiLite 250Lm 3h M | 3.6 W | 250 Lm | 3h | 7.2V - 1.7Ah Ni-Cd | Maintained / Non-Maintained |
| NXL100-IP | NexiLite 100Lm 1h IP65 | 1.5 W | 100 Lm | 1h | 3.6V - 0.8Ah Ni-Cd | Non-Maintained |
| NXL150-IP | NexiLite 150Lm 1h IP65 | 1.5 W | 150 Lm | 1h | 3.6V - 0.8Ah Ni-Cd | Non-Maintained |
| NXL250-IP | NexiLite 250Lm 1h IP65 | 1.8 W | 250 Lm | 1h | 3.6V - 1.7Ah Ni-Cd | Non-Maintained |