



- LED portable hand lamp with emergency light function
- Robust construction of impact-resistant, non-abrasive plastic
- Main beam output configurable
- Flashing light function
- Up to 14 h light (ancillary light) and 5.5 h (Eco main beam) with 4 Ah battery
- Up to 27.5 h light (ancillary light) and 9 h (Eco main beam) with 7 Ah battery
- Long range up to 50 m at 1.5 lx illuminance

Light Source:

Main beam: 3 High Power LEDs with narrow distribution reflector optic

Ancillary light: 6 x MidPower-LED (1.5 W) and wide light distribution

Materials:

grey, impact resistant, non-abrasive plastic

Installation:

Integrated charger – connection via flexible spiral cable with EURO plug

Includes three slip-on filters (red, orange, clear prismatic) for modification of light distribution and signalling

Operation:

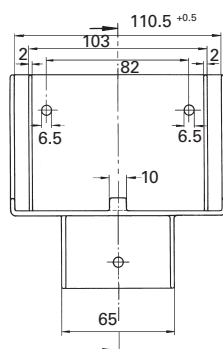
Main beam output can be set: Eco mode for longer battery operation (3.0 W) or boost mode for increased luminous flux (5.5 W)

Charging indicator by green LED

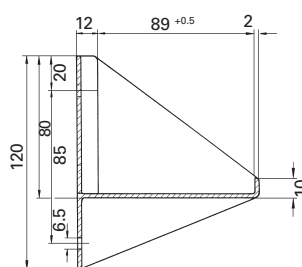
Switch function: Flashlight, maintained light and ancillary light

The W276 LED hand lamp combines the longtime proofed robust construction made from impact resistant plastics with the efficient and powerful LED technology. It is especially suitable as a search projector with its focused light cone and long range. The W276 is equipped with an integrated charger. The flashing function in combination with the red or orange diffuser disc also allows use as a reliable signal light.

This range has two different light characteristics: the main beam with up to 330lm and narrow beam distribution can be used as a search light or to light an area from a big distance. It has also a work light which gives diffuse light with a duration of up to 14h (4Ah version) or 27h (7Ah version).



Wall bracket



Order code	Description				
40071352032	W 276.3/4 LED	10 VA	330/240/65 lm	4.8V/4Ah	Non-Maintained

Accessories

40071345248	Rechargeable battery 4.8 V/4 Ah
40071345253	Rechargeable battery 4.8 V/7 Ah
40071344274	Shock-proofed wall holder
11145000492	Wall bracket
40018031358	Spiral cable with EURO plug
21145995000	Slip-on filter set red, orange and clear prismatic



- LED portable hand lamp with emergency light function
- Robust construction
- External charger for low luminaire weight
- Main beam output configurable
- Flashing light function
- Up to 14 h light (ancillary light) and 5.5 h (Eco main beam) with 4 Ah battery
- Up to 27.5 h light (ancillary light) and 9 h (Eco main beam) with 7 Ah battery
- Long range up to 50 m at 1.5 lx illuminance

Light Source:

Main beam: 3 High Power LEDs with narrow distribution reflector optic

Ancillary light: 6 x MidPower-LED (1.5 W) and wide light distribution

Materials:

Grey, impact resistant, non-abrasive plastic

Installation:

External charger for low luminaire weight

Includes three slip-on filters (red, orange, clear prismatic) for modification of light distribution and signalling

Operation:

Main beam output can be set: Eco mode for longer battery operation (3.0 W) or boost mode for increased luminous flux (5.5 W)

Charging indicator: green LED

Switch function: Flashlight, maintained light and ancillary light

The W270 LED hand lamp combines the longtime proofed robust construction made from impact resistant plastics with the efficient and powerful LED technology. It is especially suitable as a search projector with its focused light cone and long range. The W270 is the variant with an external charger for less luminaire weight. The flashing function in combination with the red or orange diffuser disc also allows use as a reliable signal light.

This range has two different light characteristics: the main beam with up to 330lm and narrow beam distribution can be used as a search light or to light an area from a big distance. It has also a work light which gives diffuse light with a duration of up to 14h (4Ah version) or 27h (7Ah version).

Photometric data (Main beam)	Irradiance I max = 3720 cd / Half value angle = 12.4° Illuminance: 150 lx @ 5 m, 6 lx @ 25 m, 1.5 lx @ 50 m	
Emergency duration	4 Ah battery	7 Ah Battery
	5.5 h Eco (main beam)	9.0 h Eco (main beam)
	3.5 h Boost (main beam)	6.0 h Boost (main beam)
	14.0 h (ancillary light)	27.5 h (ancillary light)
Battery	rechargeable, maintenance free and gas tight NC-Accu - 4.8 V / 4 Ah - 4.8 V / 7 Ah	
Light source		
Main beam	3 x HighPower-LED 3.0 W - 240 lm (Eco) / 4.5 W - 330 lm (Boost)	
Ancillary light	6 x MidPower-LED	
	1.5 W - 65 lm	lm = luminaire flux
Connection voltage	230 V 50/60 Hz	



Charging unit Z 345.3

Order code	Description	⚡	☀️	🔋	⚙️
40071352030	W 270.3/4 LED		330/240/65 lm	4.8V/4Ah	Non-Maintained
40071352031	W 270.3/7 LED		330/240/65 lm	4.8V/7Ah	Non-Maintained

Accessories

40071341145	Charging unit Z 345.3	10 VA
40071345248	Rechargeable battery 4.8 V/4 Ah	
40071345253	Rechargeable battery 4.8 V/7 Ah	
21145995000	Slip-on filter set red, orange and clear prismatic	