

508 - Braccio doppio

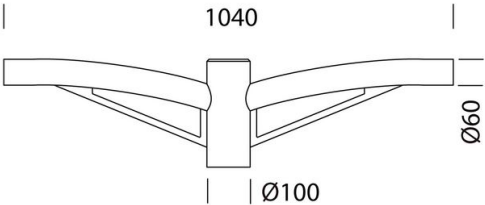
Codice: 991267-00

INFORMAZIONI GENERALI

Articolo	508 - Braccio doppio
Codice	991267-00

DIMENSIONI E PESO

Lunghezza (mm)	1040 mm
Larghezza (mm)	100 mm
Altezza (mm)	350 mm
Peso (Kg)	9 kg



in acciaio, idoneo per l'installazione su pali con attacco Ø60.



## 508 - Braccio doppio

---

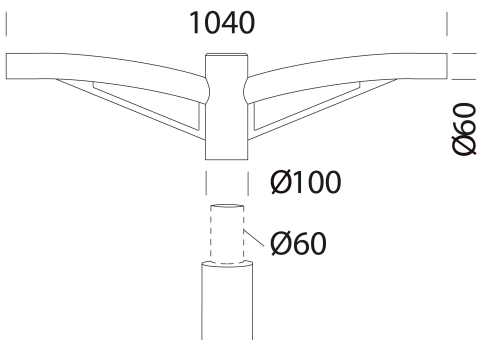
Codice: 991267-00



508 - Braccio doppio

Codice: 991267-00

MATERIALI E COLORI



Corpo	in acciaio, idoneo per l'installazione su pali con attacco Ø60.
Attacco palo	60 mm
Colore	Antracite

GARANZIA

Garanzia post-vendita	0 yr
-----------------------	------

DOWNLOAD

DISEGNI

DisegnoTecnico 508.dxf



## 508 - Braccio doppio

Codice: 991267-00



**3472 Giovi M1 - stradale**



**3278 Mini Stelvio FX T3 - diffondente stradale**



**3285 Rolle - high performance**



**3286 Rolle - high performance**



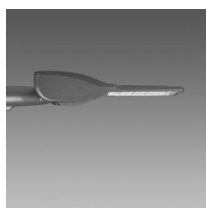
**3476 Mini Giovi W2 - stradale**



**3477 Mini Giovi N1 - ciclabile**



**3478 Mini Giovi M1 - stradale**



**3479 Mini Giovi T4 - grandi aree**



**3480 Mini Giovi - high performance - grandi aree**



**3481 Mini Giovi - high performance - stradale ME**



**3482 Mini Giovi - high performance - ciclabile**



**3483 Mini Giovi AMBRA - grandi aree**



**3484 Mini Giovi AMBRA - stradale ME**



**3485 Mini Giovi AMBRA - ciclabile**

508 - Braccio doppio


Codice: 991267-00



3486 Mini Giovi sinistro (SX)-attraversamenti pedonali




3487 Mini Giovi destro (DX)-attraversamenti pedonali




3473 Giovi W1 - stradale



3474 Giovi M2 - stradale



3490 Giovi - high performance - grandi aree



3491 Giovi - high performance - stradale ME



3492 Giovi AMBRA T4 - grandi aree



3493 Giovi AMBRA - stradale ME



3494 Giovi T4 - asimmetrico - grandi aree



3495 Giovi W2 - stradale



3496 Giovi - sinistro (SX)-attraversamenti pedonali



3497 Giovi - destro (DX)-attraversamenti pedonali



3277 Mini Stelvio FX T2 - stradale



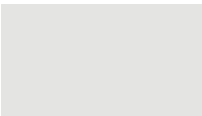
3375 Mini Stelvio - high performance - stradale

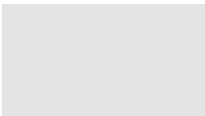


3280 Rolle - T1



3283 Rolle - T4







**3290 Sella 1 - ST**



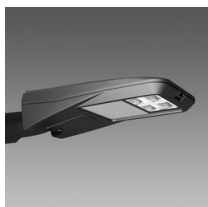
**3291 Sella 1 - STWB**



**3292 Sella 1 - asimmetrico 45°**



**3293 Sella 1 - asimmetrico 60°**



**3294 Sella 1 - piste ciclabili**



**3295 Sella 1 - grandi aree**



**3296 Sella 1 - HP**



**3297 Sella 1 - HP -attraversamenti pedonali SX**



**3298 Sella 1 - HP -attraversamenti pedonali DX**



**3390 Sella 2 - ST**



**3391 Sella 2 - STWB**



**3392 Sella 2 - asimmetrico 45°**



**3393 Sella 2 - asimmetrico 60°**



**3395 Sella 2 - grandi aree**



**3396 Sella 2 - HP**



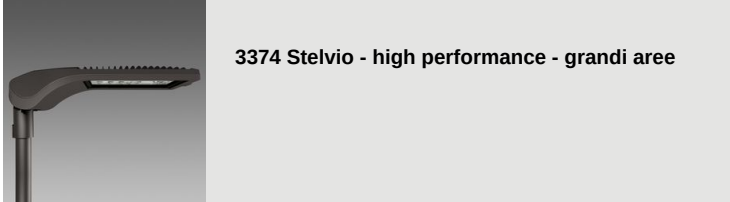
**3270 Stelvio 1 - Plus - LED**



**3274 Stelvio 2 - Plus - LED asimmetrico**



**3370 Stelvio - high performance - stradale**



**3374 Stelvio - high performance - grandi aree**



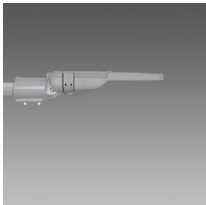
**3475 Mini Giovi W1 - stradale**



**3275 Mini Stelvio - stradale**



**3465 Denia PRO 1 - FTW60 large areas**



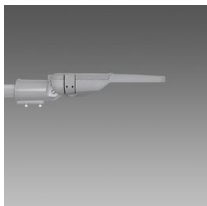
**3460 Denia PRO 1 - LM - L-H<1**



**3460 Denia PRO 1 - ME - L-H=1**



**3460 Denia PRO 1 - LW - L-H>1**



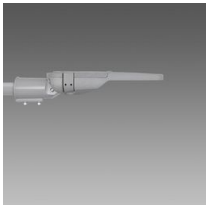
**3462 Denia PRO 1 - T2-C CYCLEWAY**



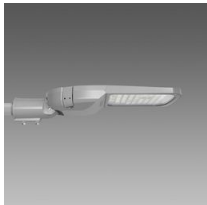
**3460 Denia PRO 1 - LP**



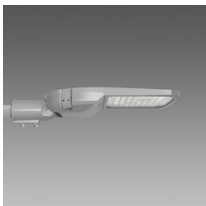
**3463 Denia PRO 1 - PD FS3**



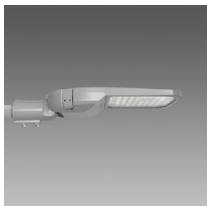
**3464 Denia PRO 1 - PS FS3**



**3461 Denia PRO 2 - LM - L-H<1**



**3461 Denia PRO 2 - ME - L-H=1**



**3461 Denia PRO 2 - LW - L-H>1**



**3461 Denia PRO 2 - T3**



**3466 Denia PRO 2 - FTW60 large areas**

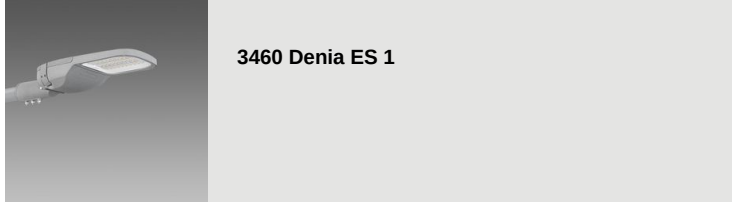


**3467 Denia PRO 2 - PD FS3**

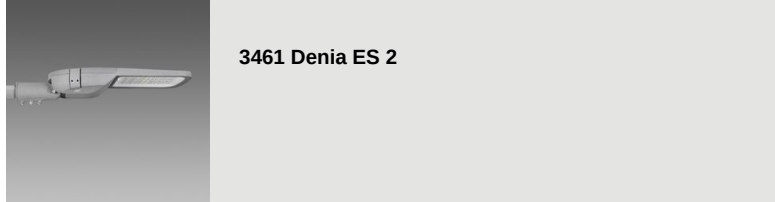


**3468 Denia PRO 2 - PS FS3**

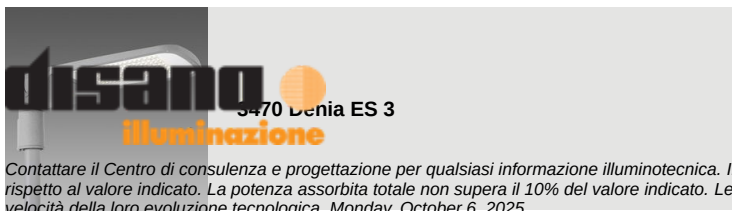




**3460 Denia ES 1**



**3461 Denia ES 2**



**3470 Denia ES 3**

**disano**  
**illuminazione**

Contattare il Centro di consulenza e progettazione per qualsiasi informazione illuminotecnica. Il flusso luminoso uscente riportato indica il flusso luminoso dell'apparecchio con una tolleranza di  $\pm 10\%$  rispetto al valore indicato. La potenza assorbita totale non supera il 10% del valore indicato. Le informazioni illuminotecniche possono essere soggette a variazioni e miglioramenti a causa della velocità della loro evoluzione tecnologica. Monday, October 6, 2025