





Contents

1. System requirements	4
2. Fundamental concepts	4
3. Compatible Devices	4
4. Languages available	5
5. Implementation	5
5.1 Material required	5
5.2 Installation	5
5.3 Modification of the software's language	8
5.4 Search device	9
5.5 Device firmware update	12
6. Device Configuration	13
6.1 Configuration of device on your system	13
6.1.1 Configuration page	14
6.2 Configurable parameters of each module (examples)	15
6.3 View pages	16
7. Off-line operation	17
7.1 Import a configuration	17
7.2 Export a configuration	18

1. System requirements

Hardware:

- Intel® Core 2 Duo or AMD® Athlon X2® processor
- 2GB of RAM
- 320MB of available hard-disk space
- USB port for connection IDM Configurator
- **Supported operating systems:**
- Microsoft Windows XP (Professional) - Service Pack 3
- Microsoft Windows Vista - Service Pack 2
- Microsoft Windows 7 - Service Pack 3
- Microsoft Windows 10 - All Service Pack

Installation and Display:

- on Computer

2. Fundamental concepts

The IDM Configuration Software offers the possibility of configuring CONTO Energy meters using a simple and intuitive procedure by the creation of a customized project based on personal needs and the actual system installed.

Note: IDM Configuration Software is free. To be downloaded from the IME web site. Once downloaded it will be useful for all remote configurations of CONTO Energy Meters

3. Compatible devices

Software version 1.00.00

- Range **CONTO**
 - **Modbus**
 - Conto D2 63A 1ph Modbus (CE2DF3DTCL1)
 - Conto D2 63A 1ph Modbus MID (CE2DF3DTMID)
 - Conto D4 63A 3ph Modbus (CE4DF3DTCL1)
 - Conto D4 63A 3ph Modbus MID(CE4DF3DTMID)
 - Conto D4 5A 3ph Modbus(CE4TBDTCL1)
 - Conto D4 5A 3ph Modbus MID(CE4TBDTMID)
 - **Mbus**
 - Conto D2 63A 1ph Mbus MID(CE2DF3MTMID)
 - Conto D4 63A 3ph Mbus(CE4DF3MTCL1)
 - Conto D4 5A 3ph Mbus(CE4TBMTCL1)
 - Conto D4 5A 3ph Mbus MID(CE4TBMTMID)

4. Languages available

Languages:


- English
- Français
- Italiano

5. Implementation

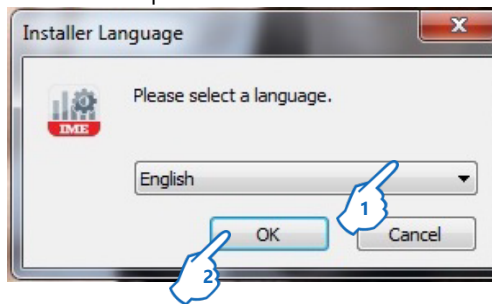
5.1 Material required

- Installation Kit (executable file ".exe")
- A computer with a compatible operating system (10, 7, etc.)

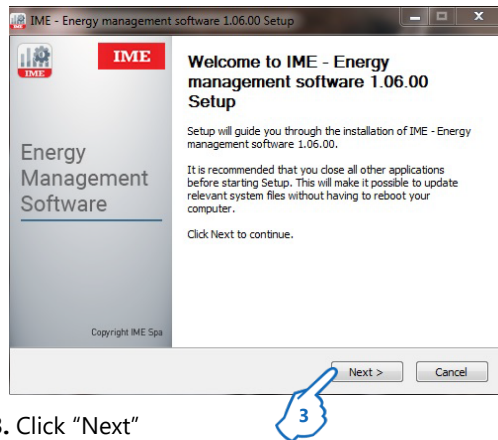
5.2 Installation

- Run the file  IME_Energy_management_software_Setup_v.r.b.exe

The installation procedure starts

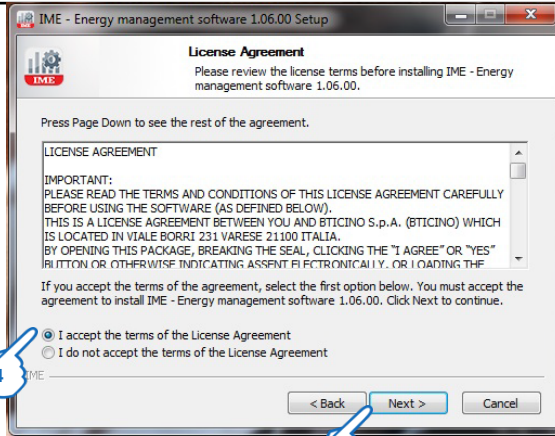


1. Choose the proper language
2. Click "OK"

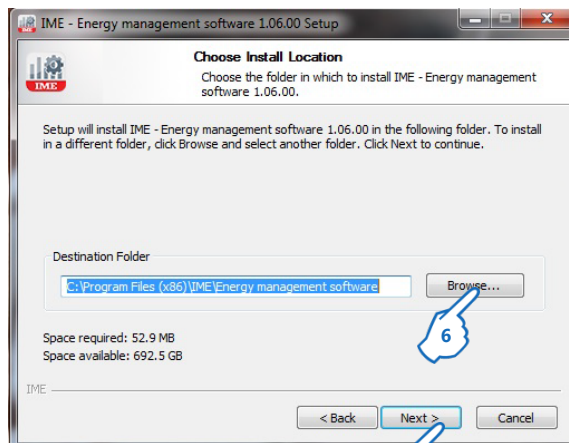


3. Click "Next"

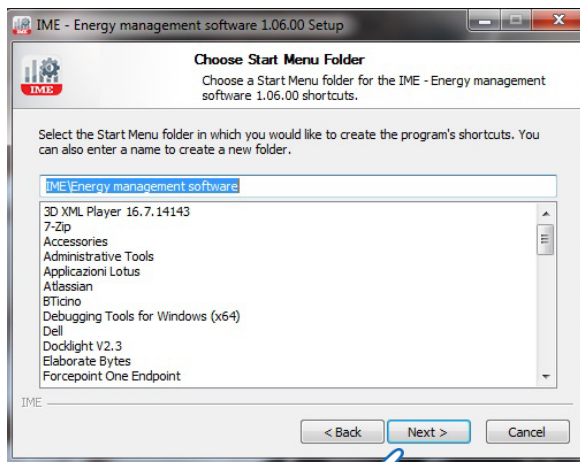
The License agreement page appears



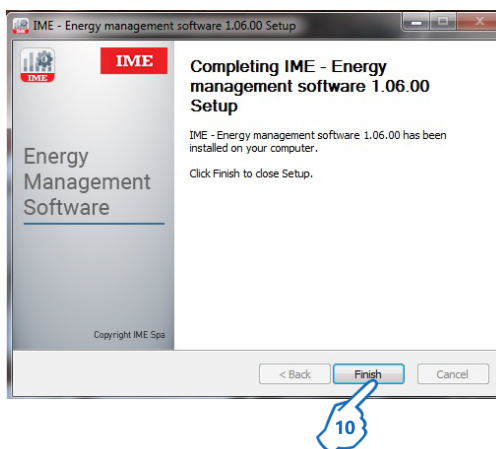
4. Click to declare to have read and accepted the contract
5. Click "Next"



6. Click "Browse" to choose the installation folder
7. Click "Next"



8. Click "Next"



Installation completed

10. Click "Finish"

On the desktop of your computer are created two shortcuts:

- Energy management software:



IME – Energy manager software



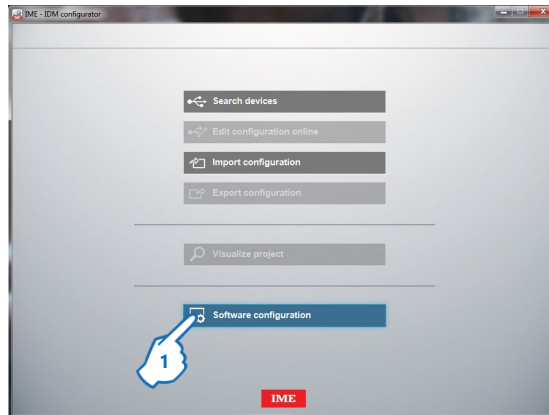
IME - NEMO SX Configurator



IME – IDM Configurator

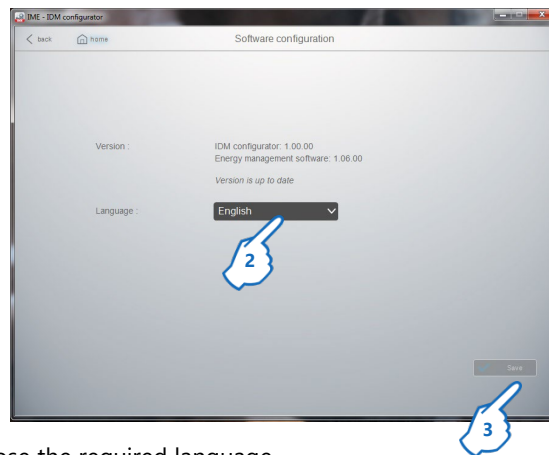
5.3 Modification of the software's language

- Procedure for changing language (if necessary)



In the software's home page

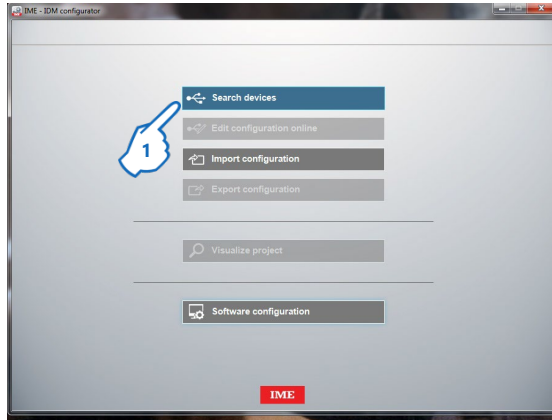
1. Click "Software configuration"



2. Choose the required language
3. Click "Save" to confirm

5.4 Search Devices

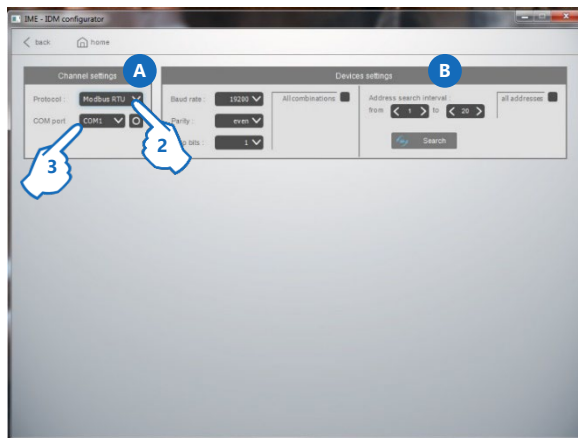
In the software's home page



1. Click "Search Device"

The scan page is divided to 2 sections:

- A. Channel Settings
- B. Device Settings

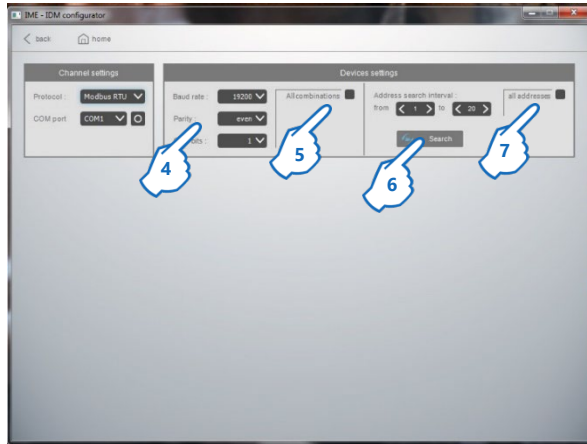


A. Channel Setting

2. Choose the correct Communication Protocols.
3 Software supports :
Modbus RTU
Modbus TCP
M-bus
3. Choose the correct COM port.

5.4.1 Modbus RTU

B. Device Settings



4. Verify and choose the Correct Baud rate and Parity, otherwise
5. Choose the All Combinations.
6. Search in a specific range of addresses or
7. Choose All addresses.

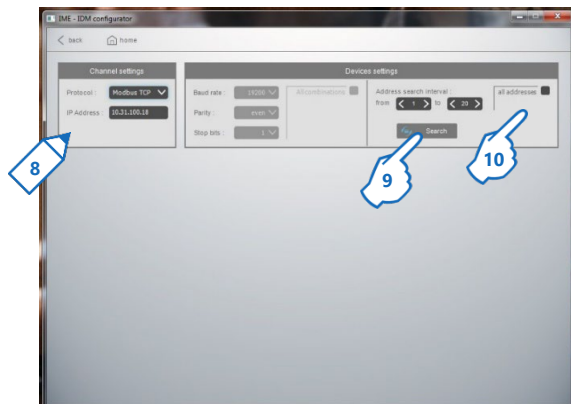
5.4.2 Modbus TCP

First of all, it is needed a TCP gateway interface.

For example:

- **SXIIP: gateway Ethernet/RS485 (1:N)**

In this case, you need to connect your PC to the same network of your Modbus TCP gateway. (**Ethernet**)

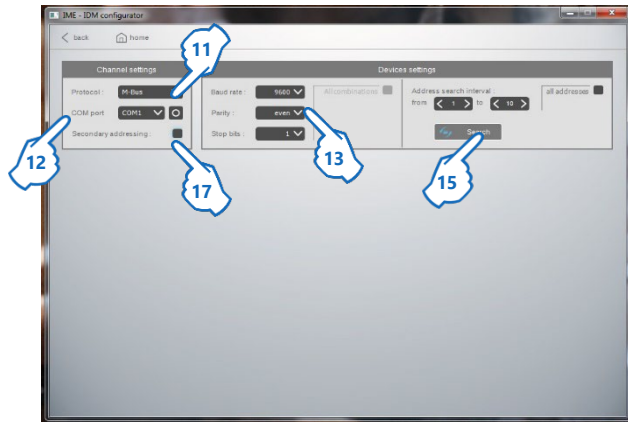


8. Enter the IP Address of your gateway.
9. Search in a specific range of addresses or
10. Choose All addresses

5.4.3 M-bus

First of all, you need a M-Bus Converter

11. Choose the M-Bus Protocol.
12. Choose the correct COM port.

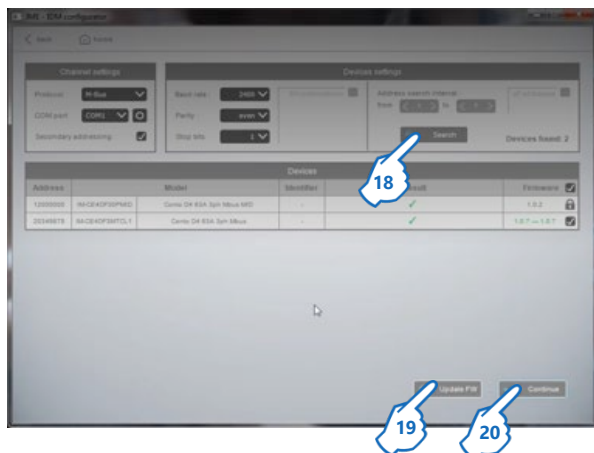


13. Verify and choose the Correct Baud rate and Parity, otherwise
14. Click on Search button



Note: You can search the Primary Addresses or the Secondary Addresses.

17. Click Secondary Addressing for check.

5.4.4 Scan



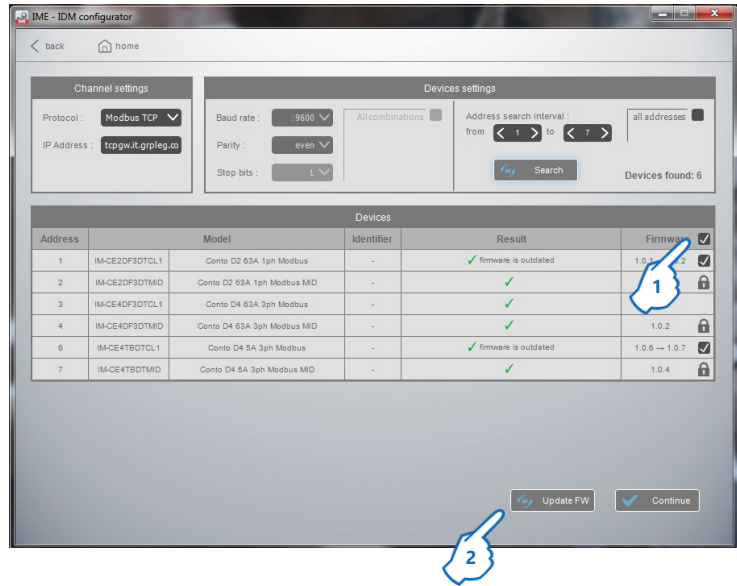
18. By clicking on the Search button, a page with the latest Firmware updates will be shown:

-  MID devices are not updatable
-  Updates available

19. Click Update FW
20. Click "Continue" to go to the edit page of the configuration read.

5.5 Device firmware update

As soon as the search devices page appears, you can see if updated firmware is available for each module.

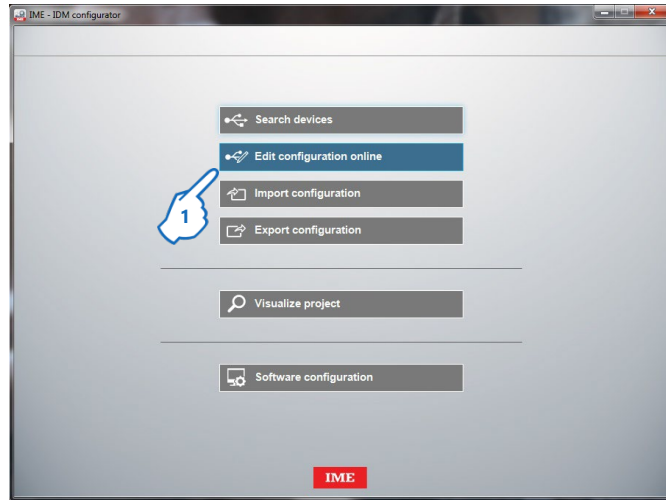


1. You can check the small window on top to update all the available firmware updates
2. Otherwise you can uncheck it and choose just the modules you would like to update
3. Finally, click on the update FW button (it might take some time to update, please wait until the software finishes the process)

6. Device Configuration

6.1 Configuration of devices on your system

In the Home page

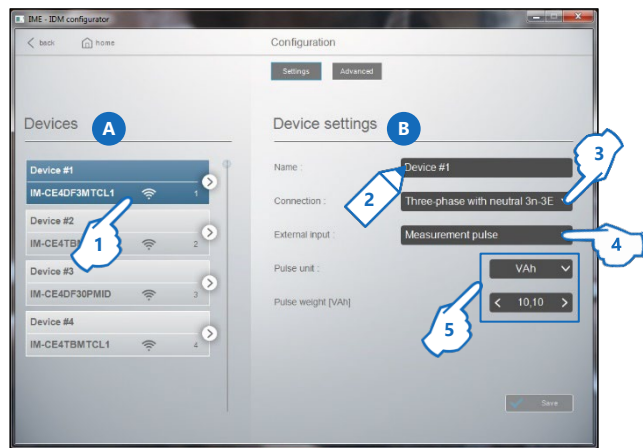


1. Click "Edit Configuration online"
The Configuration Page will be appeared.

6.1.1 Configuration Page

The page is divided into two sections:

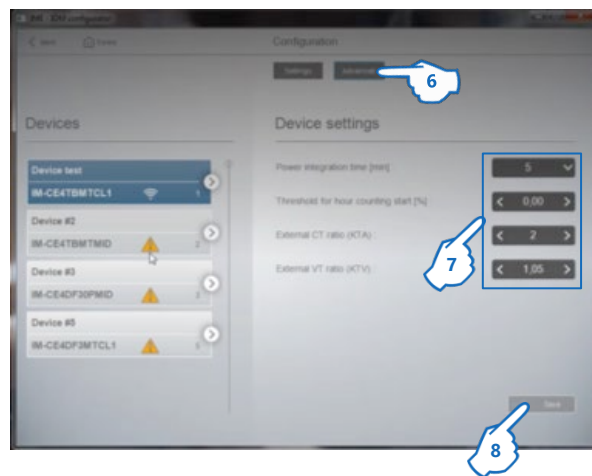
- A List of the devices
- B Configuration Settings for the selected device on the section A



• TO VIEW/CONFIGURE THE DEVICES CHARACTERISTICS

In Settings

1. Select a Device
2. Rename the Device
3. Click "Connection" and choose the correct connection
4. Click "External input" and choose the correct input
5. Click for assign the other control parameter



In Advanced

6. Click "Advanced" and a set additional parameters are shown
7. Click for assign the other control parameters
8. Click "Save" to confirm

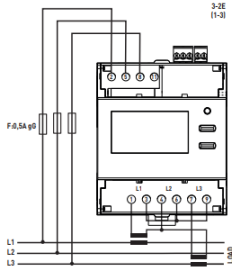
Note:

- Device connected to the Wi-Fi
- Device not connected to the Wi-Fi

**To be able to access the saved settings directly, click on "Export Configuration".
For more details, see page 26**

6.2 Configurable parameters of each module

Examples of Configuration

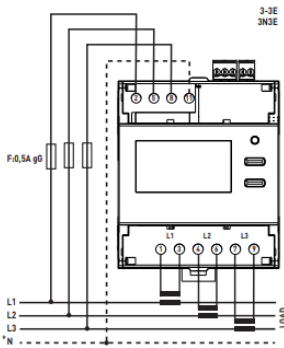


Device settings

Name :

Connection : ▼

External input : ▼

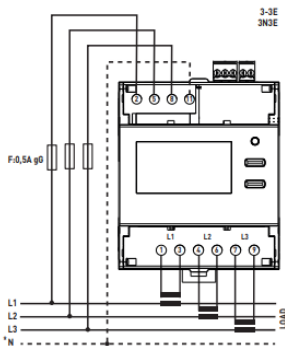


Device settings

Name :

Connection : ▼

External input : ▼



Device settings

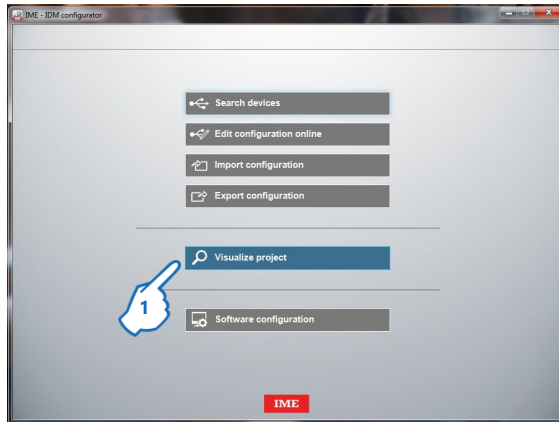
Name :

Connection : ▼

External input : ▼

6.3 View pages

In the software's Home page



1. Click "Visualize project"

Devices display page appears



The page is divided into two e sections:

section **A** shows the Devices (Network icon shows if your device is connected or no, (in all 3 protocols: Modbus RTU, Modbus TCP, M-bus)
 section **B** is the area where is possible to select several pages (according to the functions present in a Device):

- Measure: display of the quantities measured by a device:
 - Electricity measuring devices: Energy, Power, Voltages / Currents / Frequency, THD and Harmonics
 - THD and Harmonics are just available for the easy connects.

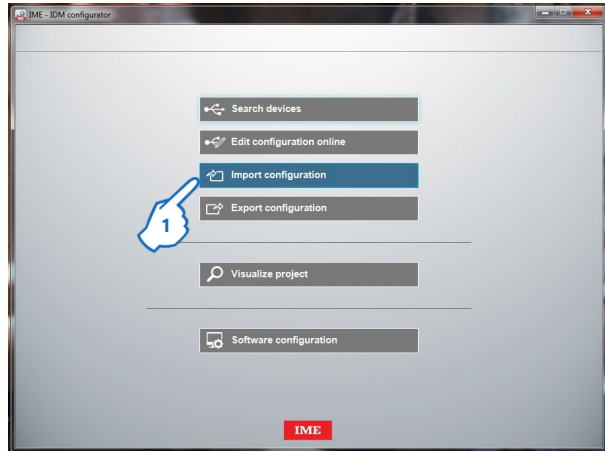
Note:

ON Indicates the active tariff

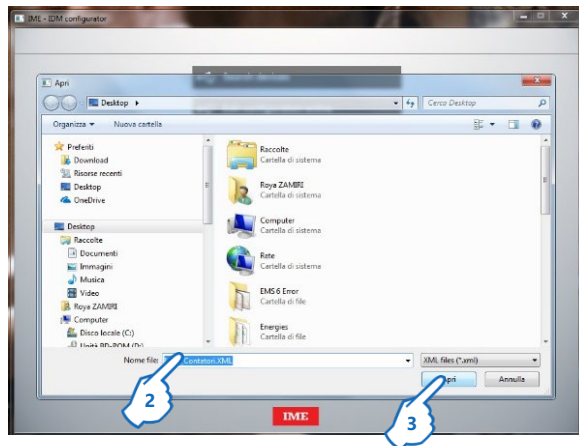
7. Off-line operation

7.1 Import a configuration

In the Software's home page



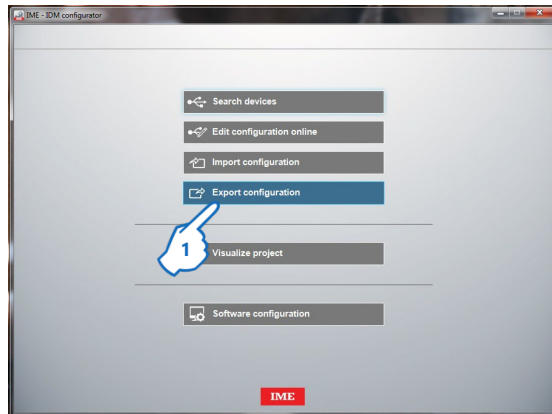
1. Click "Import Configuration"
System configuration appears



2. Select the file to import (e.g. Configuration.XML), then
3. click "Open"
Configuration is ready to be edit

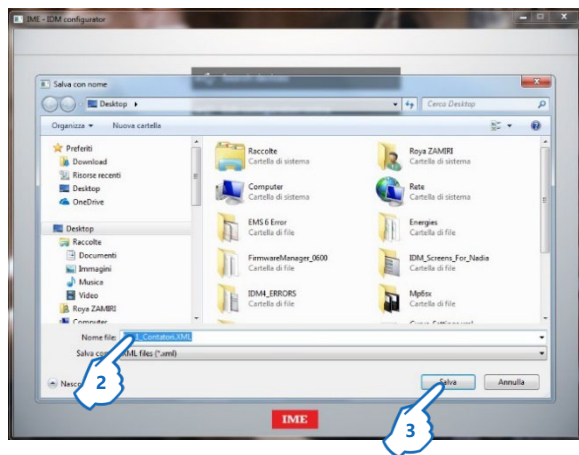
7.2 Export a configuration

In the System configuration page



1. Click "Export configuration"

A pop-up window appears



2. Select the where to save file, then

3. Click "Save"

Configuration is saved on your computer



A Group brand |  **legrand**

BTicino SpA
Viale Borri, 231
21100 Varese -
Italy
www.imeitaly.com

BTicino reserves at any time the right to modify the contents of this booklet and to communicate, in any form and modality, the changes brought to the same.



Supported Devices

Added the support for the following list of devices:

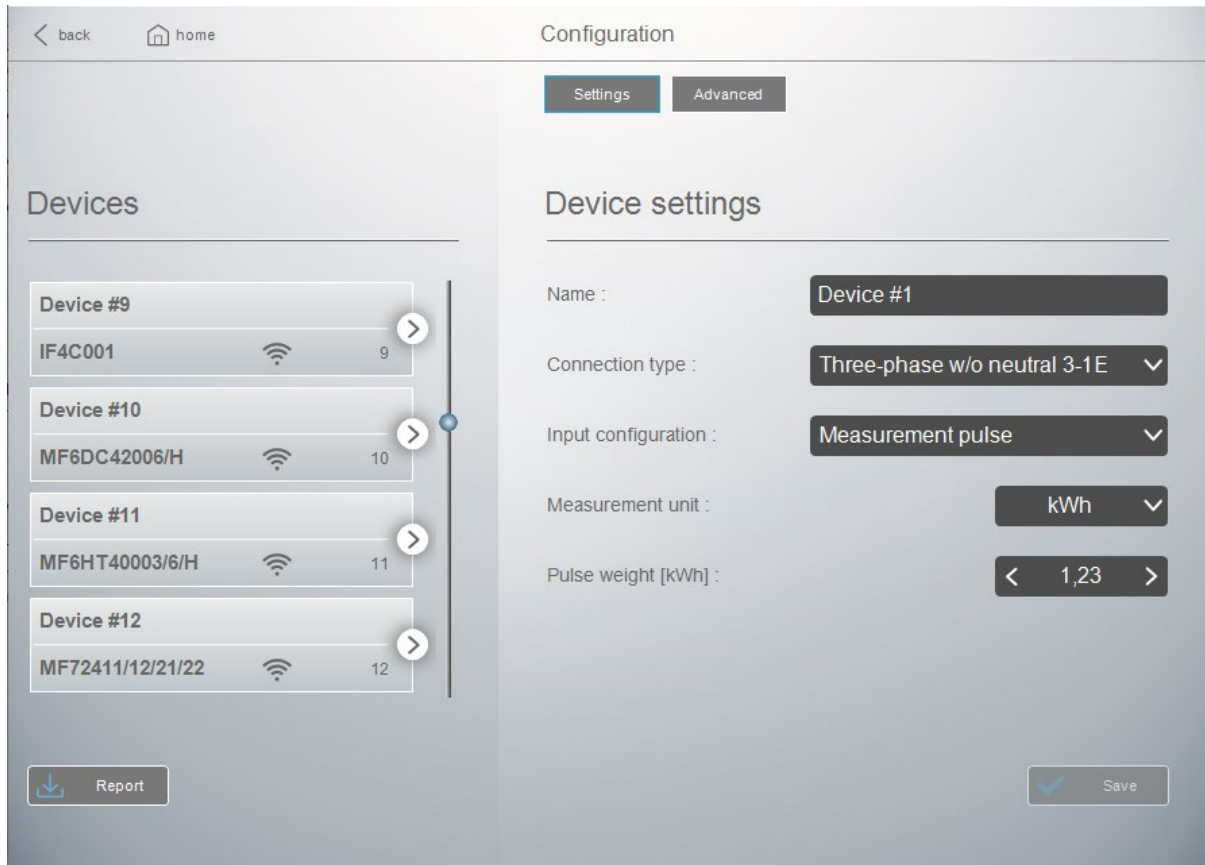
- Conto D1:
 - IM-CE11165A4
- Conto D6-Pd:
 - IM-CE6DT1256
 - IM-CE6DMID56 (MID)
- Conto IMP:
 - IM-IF4C001
- Nemo D4-Dc:
 - IM-MF6DC4200H
 - IM-MF6DC42006
- Nemo D4-L+:
 - IM-MF6HT40003
 - IM-MF6HT40006
 - IM-MF6HT4000H
- Nemo D4-Le:
 - IM-MFD4421
 - IM-MFD4422
- Nemo D4e:
 - IM-MFD4E06
- Nemo 72-Le:
 - IM-MF72411
 - IM-MF72412
 - IM-MF72421
 - IM-MF72422
- Nemo 96HD:
 - IM-MF96001
- Nemo 96HD+:
 - IM-MF96021
- Tema PR4:
 - IM-TM960411
 - IM-TM960412
 - IM-TM960451
 - IM-TM960452
- Nemo 96 EA:
 - IM-MFQ96021
 - IM-MFQ96022
- Nemo 96HDE:
 - IM-MF96E06
- Nemo 96HDLe:
 - IM-MF96421
 - IM-MF96422
- Nemo 96HD+ New:
 - IM-MF96021A
 - IM-MF96022A

Report functionality

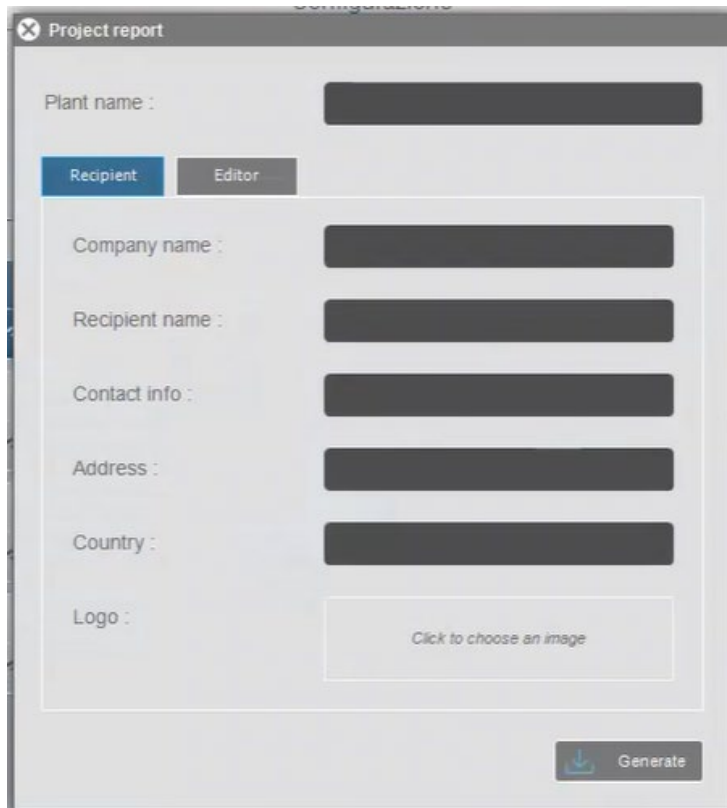
Export a plant report

The new “Report” functionality allows the user to export a .xlsx file containing information about the devices discovered by the software and some details about them.

By clicking on the “Report” button, available in the “Configuration” page of the software:



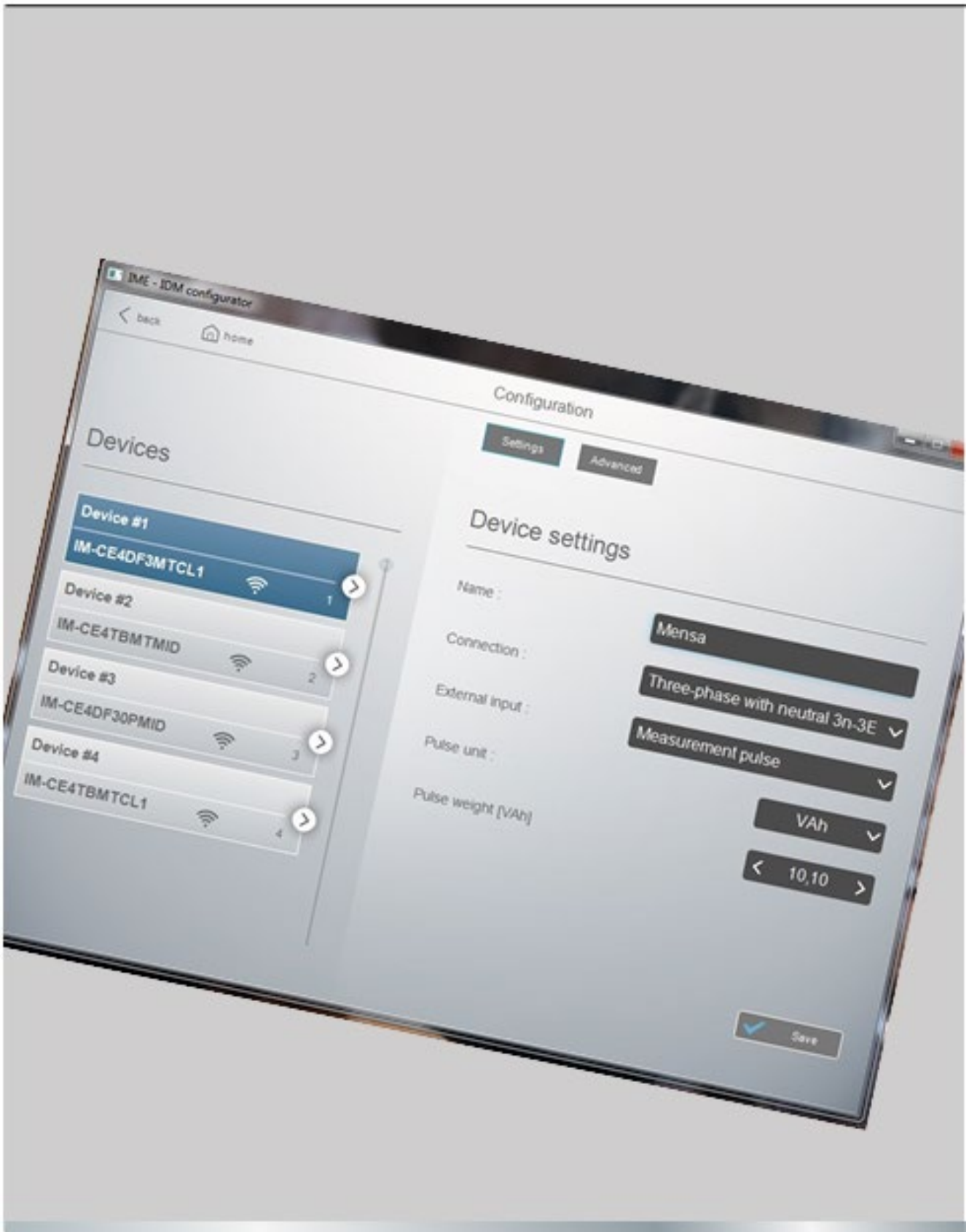
The following dialog will appear:



The image shows a software dialog box titled "Project report". At the top left, there is a close button (an 'X' in a square) and the title "Project report". Below the title, there is a label "Plant name :" followed by a dark grey rectangular input field. Underneath this, there are two tabs: "Recipient" (which is highlighted in blue) and "Editor" (which is grey). Below the tabs, there is a large light grey rectangular area containing several input fields: "Company name :", "Recipient name :", "Contact info :", "Address :", and "Country :", each followed by a dark grey rectangular input field. Below these fields is a "Logo :" label followed by a light grey rectangular button containing the text "Click to choose an image". At the bottom right of the dialog, there is a "Generate" button with a blue download icon to its left.

Within the form it is possible to fill in the information relating to both the recipient and the editor of the report. The latter will be remembered for future use.

Once done, click on "Generate" button to save the report.



Supported Devices

Added the support for the following list of devices:

- Conto D1:
 - IM-CE1D45AMB
 - IM-CE1DMID45AMB
- Conto D6 100A:
 - IM-CE6DJ0DTCL1