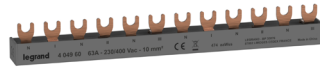
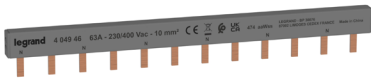


Horizontal supply busbars prong-type or fork-type

Cat.Nos:

4 049 26/28/33/37; 4 049 46 to 4 049 55;
4 049 36; 4 049 56 to 4 049 65; 4 049 68, 4 049 69



CONTENT	Page
1. Use	1
2. Range	1
3. Technical data	1
4. Mounting	2
5. Accessories	2
6. Marking	4
7. Norms et regulations.....	4
8. Other information.....	4

1. USE

Horizontal supply busbars prong-type or fork-type allowing the electrical supply a row or group of devices.

2. RANGE

2.1 Prong-type busbars

Cat.Nos	Old Cat. Nos	Designation	Cross-section in mm ²	Max dissipated power in W
4 049 26	-	Prong-type busbars 13 modules 1P	16	1,1
4 049 28	-	Prong-type busbars 18 modules 1P	16	1,6
4 049 33	-	Prong-type busbars 37 x 1,5 module (1 meter)	16	5
4 049 37	-	Prong-type busbars 57 modules (1 meter) 1P	16	5
4 049 46	4 049 38	Prong-type busbars 6 modules 2P	10	0,6
4 049 47	4 049 39	Prong-type busbars 28 modules 2P	16	5
4 049 48	4 049 40	Prong-type busbars balanced 6 modules 2P	10	0,6
4 049 49	4 049 66	Prong-type busbars balanced 9 modules 2P	10	1,6
4 049 50	4 049 41	Prong-type busbars balanced 28 modules (1 meter) 2P	16	5
4 049 51	4 049 42	Prong-type busbars 4 modules 3P	10	0,9
4 049 52	4 049 43	Prong-type busbars 19 modules 3P	16	15
4 049 53	4 049 34	Prong-type busbars for aux. 16 modules (1 meter) 3P	16	15
4 049 54	4 049 44	Prong-type busbars 3 modules 4P	10	3,9
4 049 55	4 049 45	Prong-type busbars 14 modules (1 meter) 4P	16	18,5

2.2 Fork-type busbars

Cat.Nos	Old Cat. Nos	Designation	Cross-section in mm ²	Max dissipated power in W
4 049 36	4 049 20	Fork-type busbars 14 modules (1 meter) 4P	16	20
4 049 56	4 049 11	Fork-type busbars 12 modules 1P	10	1,1
4 049 57	4 049 12	Fork-type busbars 57 modules (1 meter) 1P	16	5
4 049 58	4 049 13	Fork-type busbars 6 modules 2P	10	2,1
4 049 59	4 049 14	Fork-type busbars 28 modules (1 meter) 2P	16	10
4 049 60	4 049 15	Fork-type busbars balanced 6 modules 2P	10	2,1
4 049 61	4 049 67	Fork-type busbars balanced 9 modules 2P	10	3,3
4 049 62	4 049 16	Fork-type busbars 28 modules 2P balanced on 3 phases	16	10
4 049 63	4 049 17	Fork-type busbars 4 modules 3P	10	3,2
4 049 64	4 049 18	Fork-type busbars 19 modules (1 meter) 3P	16	15
4 049 65	4 049 87	Fork-type busbars 12 x 1,5 module 3P	16	15
4 049 68	4 049 10	Fork-type busbars for aux. 16 modules (1 meter) 3P	16	15
4 049 69	4 049 19	Fork-type busbars 3 modules 4P	10	20

3. TECHNICAL DATA

3.1 Electrical characteristics

- Nominal current (Ie): 63 A
- Nominal voltage (Ue): 400 V \sim
- Insulation voltage: 400 V \sim
- Impulse voltage (Uimp): 6 kV
- Short circuit current (Icc): 10 kA
- Dielectric according to NF EN 60898-1 at 2 000 V \sim

3. TECHNICAL DATA (continued)

■ 3.2 Material characteristics

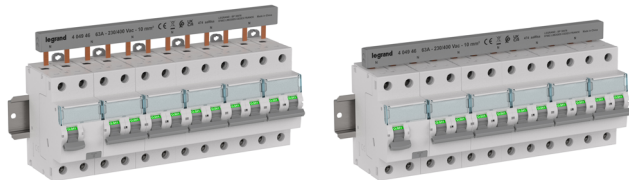
- Insulating: PC + ABS, grey colour RAL7037
- Busbar: copper

■ 3.3 Climate characteristics

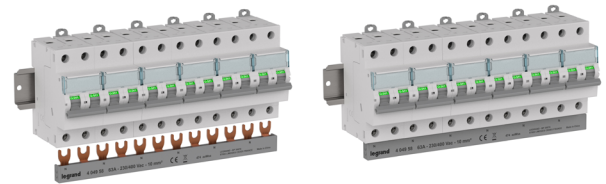
- Storage temperature: -20°C à +70°C
- Mounting temperature: -20°C à +50°C
- Operating temperature: -20°C à +50°C

4. MOUNTING

■ 4.1 Supply upstream with prong-type busbars



■ 4.2 Supply downstream with fork-type busbars



5. ACCESSORIES

■ 5.1 End caps

Cat.Nos	Designation
4 049 70	End caps for fork-type busbars Cat.Nos 4 049 56/57
4 049 71	End caps for prong-type busbars 2P length 6 modules Cat.Nos 4 049 46/58
4 049 72	End caps for prong-type busbars 2P length 1 meter Cat.Nos 4 049 47/59
4 049 73	End caps for prong-type busbars Cat.Nos 4 049 48/49/54/60/61/69
4 049 74	End caps for fork-type busbars Cat.Nos 4 049 36/50/55/62
4 049 75	End caps for prong-type busbars 3P length 4 modules Cat.Nos 4 049 51/63
4 049 76	End caps for prong-type busbars 3P length 1 meter Cat.Nos 4 049 52/53/64/65/68
4 049 88	Protection of prong-type supply busbars single pole
4 049 89	Protection of supply busbar ends for 1P/1P+N

■ 5.2 End caps for prong-type busbars

Example Cat.No 4 049 71



Cat.Nos	End caps to use								
	4 049 70	4 049 71	4 049 72	4 049 73	4 049 74	4 049 75	4 049 76	4 049 88	4 049 89
4 049 26								X	X
4 049 28								X	X
4 049 33								X	X
4 049 37								X	X
4 049 46		X							
4 049 47			X						
4 049 48				X					
4 049 49				X					
4 049 50					X				
4 049 51						X			
4 049 52							X		
4 049 53							X		
4 049 54				X					
4 049 55					X				

5. ACCESSORIES (continued)

■ 5.3 End caps for fork-type busbars

Example Cat.No 4 049 74



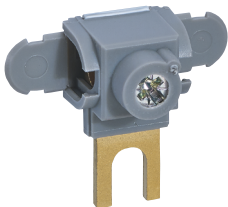
Cat.Nos	End caps to use						
	4 049 70	4 049 71	4 049 72	4 049 73	4 049 74	4 049 75	4 049 76
4 049 36					X		
4 049 56	X						
4 049 57	X						
4 049 58		X					
4 049 59			X				
4 049 60				X			
4 049 61				X			
4 049 62					X		
4 049 63						X	
4 049 64							X
4 049 65							X
4 049 68							X
4 049 69				X			

■ 5.4 Entry terminals

Cat.No 4 049 04

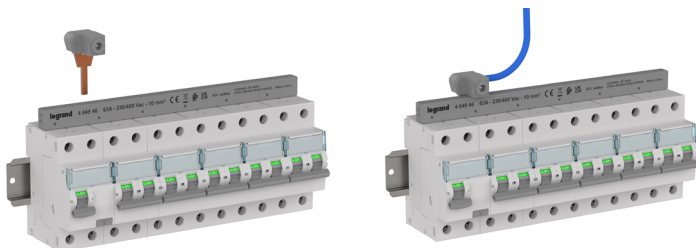
Cat.No 4 049 05

Cat.No 4 049 06



Cat.Nos	Designation
4 049 04	Entry terminal 25 mm ² for fork-type busbars
4 049 05	Entry terminal (for screw terminal product) from 4 mm ² to 25 mm ² for universal supply busbars
4 049 06	Entry terminal (for screw terminal product) from 6 mm ² to 35 mm ² for all supply busbars

Example of installation of the Cat.No 4 049 06 entry terminal:



6. MARKING

■ 6.1 Prong-type busbars

Cat.Nos	Marking
4 049 26	Blue N/Black P
4 049 28	Blue N/Black P
4 049 33	Blue N/Black P
4 049 37	Blue N/Black P
4 049 46	N
4 049 47	N
4 049 48	N I N II N III
4 049 49	N I N II N III
4 049 50	N I N II N III
4 049 51	I II III
4 049 52	I II III
4 049 53	I II III
4 049 54	N I II III
4 049 55	N I II III

■ 6.2 Fork-type busbars

Cat.Nos	Marking
4 049 36	N I II III
4 049 56	-
4 049 57	-
4 049 58	N
4 049 59	N
4 049 60	N I N II N III
4 049 61	N I N II N III
4 049 62	N I N II N III
4 049 63	I II III
4 049 64	I II III
4 049 65	I II III
4 049 68	I II III
4 049 69	N I II III

7. NORMS AND REGULATIONS

- Fire resistance: 960°C (30s) according to IEC 60695-2-1;
- Heat resistance: conforms to ball resistance 125°C according to NF EN 68898-1;
- Pollution degree: 3 according to IEC 60947-7-1;
- Protection degree: IP20 with insulation end caps and prong protection;
- Compliant with directive 2011/65/EU.

8. OTHER INFORMATION

