

IP 40

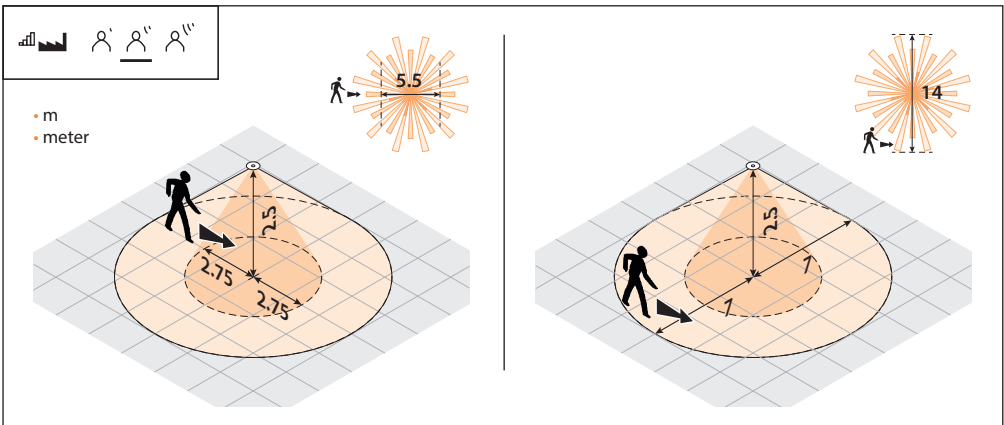
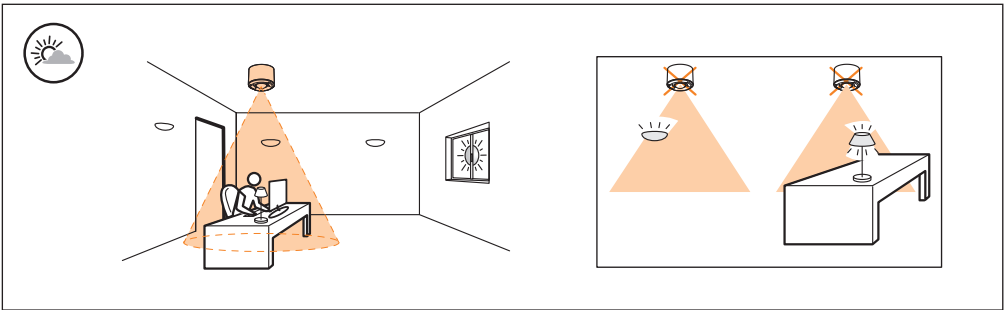
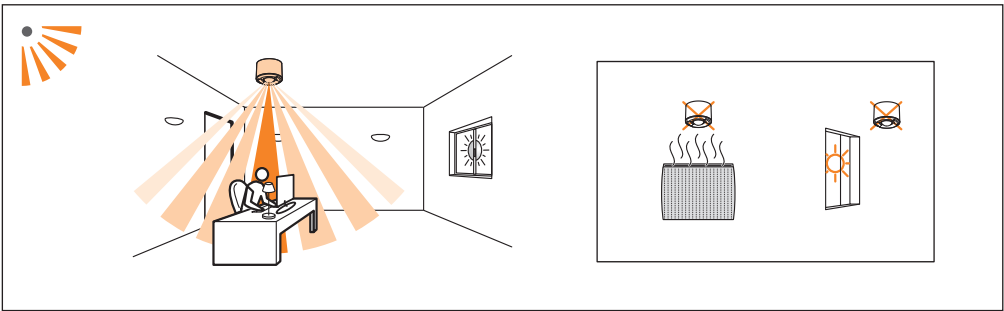
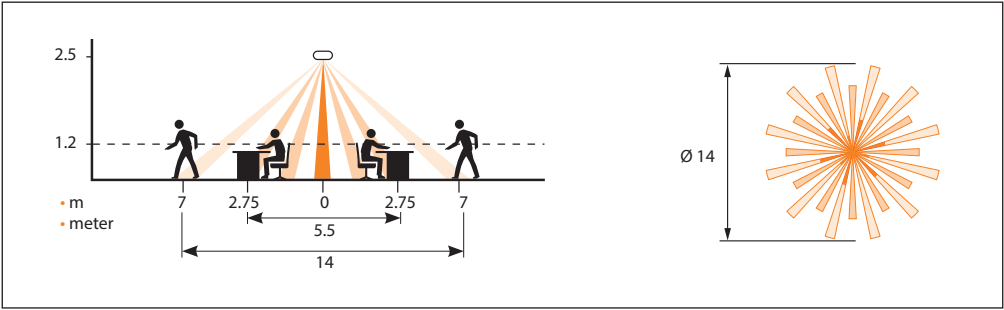
IK 04

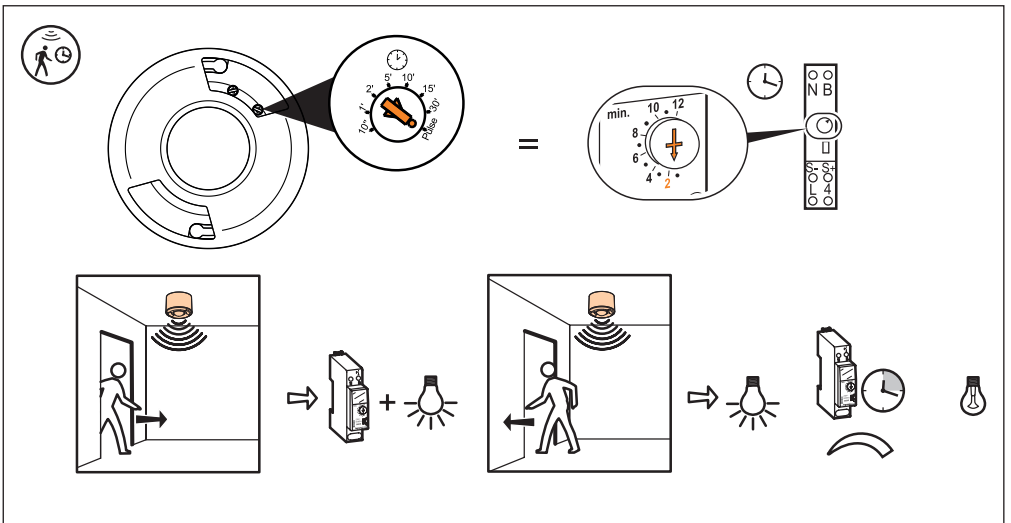
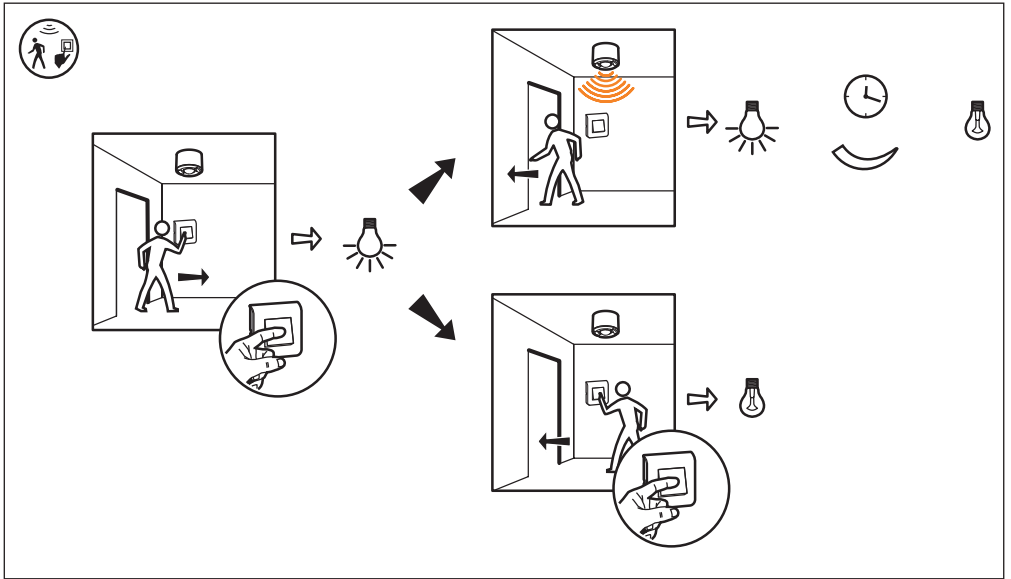
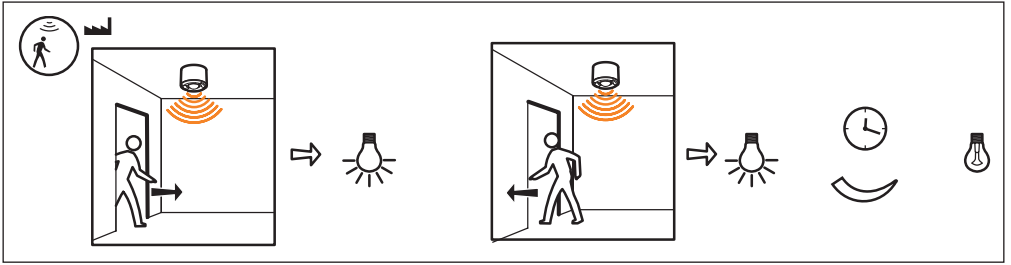


BMSA1309

	<ul style="list-style-type: none"> • 100 - 240 V~ • 100 - 240 Volt~ 		-5°C / 30°C		<ul style="list-style-type: none"> • PIR (Passive Infra Red) • IV • IR • PIR (인체감지)
	50 / 60 Hz		2000 LUX		<ul style="list-style-type: none"> • ∅ 14 m • ∅ 14 meter
	2 x 1.5mm² / 1 x 2.5mm²		10s		
	7 mm				

LED							
240 V~	350 VA	2000 W	1000 VA	10x(2x36 W)	4.3 A	500 VA	1000 VA
	3 A	8.5 A	4.3 A	4.3 A	I ≤ 2A	2.1 A	4.3 A
100 V~	175 VA	1000 W	500 VA	5x(2x36 W)		250 VA	500 VA





1

2

3

☀ Lux
5
50
150
200
300
500
1 k
2 k

🕒
10"
1'
2'
5'
10'
15'
30'
Pulse

