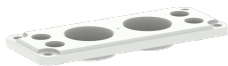




PRODUCT-DETAILS

# YMF-MB10861SET

## YMF-MB10861SET C-flange



General Information	
Extended Product Type	YMF-MB10861SET
Product ID	1SCA022715R9090
EAN	6418074052438
Catalog Description	YMF-MB10861SET C-flange
Long Description	Plastic II-flange for plastic or steel sheet enclosures. Includes sealing gasket and fixing accessories. 2xM50 and 4xM20 threaded knock out holes.

Circular Value	
Conflict Minerals Reporting Template (CMRT)	9AKK108467A5658
REACH Declaration	1SCC340076D0201
RoHS Information	1SCC340075D0201
Toxic Substances Control Act - TSCA	1SCC340095D0201

Ordering

Minimum Order Quantity	1 piece
Customs Tariff Number	85389099
Country of Origin	Finland (FI)

Popular Downloads

Data Sheet, Technical Information	1SCC340015C0201
Instructions and Manuals	No Instructions and Manuals needed
Mechanical Drawings	YMF_MB10861SET.stp

Dimensions

Product Net Width	85 mm
Product Net Height	216 mm
Product Net Depth / Length	10 mm
Product Net Weight	0.14 kg

Technical

Degree of Protection	acc. to IEC 60529 IP65
Enclosure Type	YMF

Environmental

RoHS Status	Following EU Directive 2011/65/EU
Toxic Substances Control Act - TSCA	1SCC340095D0201

Certificates and Declarations

Declaration of Conformity - CE	No declaration needed
REACH Declaration	1SCC340076D0201

Container Information

Package Level 1 Units	bag 1 piece
Package Level 1 Width	10 mm
Package Level 1 Depth / Length	85 mm
Package Level 1 Height	216 mm
Package Level 1 Gross Weight	0.15 kg
Package Level 1 EAN	6418074052438

Classifications

Object Classification		Q
Code		
ETIM 7	EC000211 - Gland plate for small distribution boards/switchgear cabinets	
ETIM 8	EC000211 - Gland plate for enclosure/cabinet	
ETIM 9	EC000211 - Gland plate for enclosure/cabinet	
UNSPSC	39122221	
IDEA Granular Category Code (IGCC)	5219 >> Switch part or accessory	
eClass	V11.1 : 27142421	
WEEE Category	5. Small Equipment (No External Dimension More Than 50 cm)	
E-Number (Norway)	1414595	

---

**Categories**

---

Low Voltage Products and Systems → Enclosed Switches → Enclosed Change-over and Transfer Switches → Accessories for Enclosed Change-over and Transfer Switches

Low Voltage Products and Systems → Enclosed Switches → Enclosed Safety Switches → Accessories for Enclosed Safety Switches

Low Voltage Products and Systems → Enclosed Switches → Enclosed Switch Fuses

Low Voltage Products and Systems → Enclosed Switches → Enclosed Switch-Disconnectors → Enclosed Switch-Disconnectors

