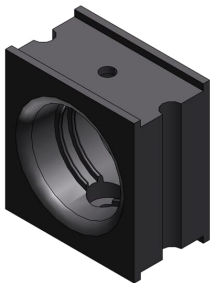




PRODUCT-DETAILS

SGP-56G

SYSTEM SUPPORT PA6 NW56 CRSE GRY



General Information	
Extended Product Type	SGP-56G
Product ID	7TCA292000R4132
EAN	7630030279416
Catalog Description	SYSTEM SUPPORT PA6 NW56 CRSE GRY
Long Description	System Support, Stackable - Coarse Profile, Fits to Conduit Size NW/Metric 56/68, Color Gray

Additional Information	
Application	Railway Vehicle Construction, Heavy Machine Building, Other Applications with Increased Mechanical Requirements
Product Type	Flexible Conduit Support Systems

Ordering	
EAN	7630030279416
UPC	786209916310

Dimensions	
Thickness	36 mm

Technical	
Number of Batteries	0
Color	Gray
Material	High-Grade Specially Formulated Polyamide/Nylon 6

Environmental	
WEEE Category	Product Not in WEEE Scope

Container Information	
Package Level 1 Units	10 EA
Package Level 1 Height	64.262 mm 2.53 in
Package Level 1 Depth / Length	388.62 mm 15.3 in
Package Level 1 Width	287.02 mm 11.3 in

Certificates and Declarations	
Data Sheet, Technical Information	SGP-56G
Instructions and Manuals	SGP-56G
Declaration of Conformity - CE	9AKK107680A0674

Classifications	
ETIM 8	EC000368 - Tube clamp
UNSPSC	39121701

Categories	
------------	--

Low Voltage Products and Systems → Installation Products → Cable Protection, Explosion Proof and Lighting → Flexible Cable Protection Systems

