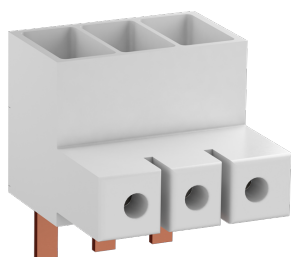




PRODUCT-DETAILS

S2-M3-50**S2-M3-50 3-phase Power infeed Block for MS165, 50 mm²****General Information**

Extended Product Type	S2-M3-50
Product ID	1SAM401923R1003
EAN	4013614555725
Catalog Description	S2-M3-50 3-phase Power infeed Block for MS165, 50 mm ²
Long Description	S2-M3-50 three phase feeder terminals allow the connection of cable cross sections up to 50mm ² . They are usable with MS165 manual motor starters. The rated current is 125 A (IEC) / 120 A (UL).

Ordering

Minimum Order Quantity	1 piece
Customs Tariff Number	85369010

Popular Downloads

Data Sheet, Technical Information	1SBC100214C0202
Instructions and	2CDC131081M6801

Manuals

Instructions and Manuals (Part 3)	1SBC100214C0202
CAD Dimensional Drawing	2CDC001079B0201

Dimensions

Product Net Width	54 mm
Product Net Height	65 mm
Product Net Depth / Length	59.3 mm
Product Net Weight	0.172 kg

Technical

Terminal Type	Screw Terminals
Rated Operational Voltage	690 V AC 250 V DC
Rated Operational Current (I _e)	125 A
Number of Poles	3
Degree of Protection	IP20
Connecting Capacity Main Circuit	Flexible 1x 10 ... 50 mm ² Rigid 1x 10 ... 50 mm ²
Tightening Torque	Main Circuit 6 N·m
Wire Stripping Length	Main Circuit 16 mm
Standards	IEC/EN 60947-1 IEC/EN 60947-4-1 UL 60947-1 UL 60947-4-1
Product Name	Power Infeed Block
Suitable For	MS165 MO165
Suitable for Product Class	Manual Motor Starters
Accessory Group	Electrical
Accessory Type	3-Phase Power Infeed Block
Remarks	UL/CSA Type E/F and IEC

Technical UL/CSA

Maximum Operating Voltage UL/CSA	Main Circuit 600 V AC
Connecting Capacity Main Circuit UL/CSA	Flexible 1x 8-0 AWG Stranded 1x 8-0 AWG
Tightening Torque UL/CSA	Main Circuit 54 in·lb

Environmental

Ambient Air Temperature	Operation -25 ... +60 °C Storage -50 ... +85 °C
-------------------------	--

Material Compliance

Conflict Minerals Reporting Template (CMRT)	9AKK108467A5658
REACH Declaration	1SAA963005-4502
RoHS Information	1SAA963006-4502
RoHS Status	Following EU Directive 2011/65/EU and Amendment 2015/863 July 22, 2019
SCIP	2ade4f22-d224-4870-8572-2f6afc73f2e4 Germany (DE)
Simplified SCIP	2202b237-fff3-49ca-982b-5b63ec0fcbfd Germany (DE) c110aeb1-456a-4225-8dcf-cdd07d579697 France (FR) 225084f3-949f-44dc-9c24-47601fe6d997 Germany (DE) e5740a91-846c-44d3-bf16-ed3b4581502c Finland (FI) 982c546b-3e45-4cfa-b772-2181daf12a28 Sweden (SE) 0ec21bcf-a57c-4350-b02d-97604b9b2788 Italy (IT) c7fb676f-c044-43b4-a88c-6d2eb0af53e9 Netherlands (NL) 2cccbf9d-54e0-4d0a-b766-b1c9feb792d1 Estonia (EE) f4c2790f-2e2e-4c90-bb51-a0f669b73e18 Greece (GR) dba769f9-d66d-4416-9aa5-a2bc6486251e Bulgaria (BG) b41998db-1c9f-48cd-aa26-e9c8b24e0574 Poland (PL) 11ea5fb6-292a-40c4-b60a-aa931583bc0b France (FR) 9e686ed5-2bc0-472a-aed4-c525c221543f Spain (ES) 49438c16-905c-46ab-8320-e8ca15a61cc8 Germany (DE) 667e85f1-6302-42d2-9f2b-dda490cbb5dd Denmark (DK) 7b6ad2ec-2afe-4b2a-9757-933d2fec2d2b Germany (DE) 903da8ea-c1a5-424c-b640-e4e4b7014fa9 Hungary (HU) cb3d615c-0c28-4973-be8a-b7c456bbd57a Sweden (SE) 6bef615d-397f-46b4-a16c-876db70c2751 Belgium (BE) 49c21700-6a66-4b21-9fdd-83d6a05ccb3e Belgium (BE) 6f7c17b6-b1e2-4178-9951-4bb87c86c4f3 Norway (NO) 7a68fea5-691c-45ad-8e06-77e3658f82db Poland (PL) 7a79ac9c-42f3-4105-a46a-0a4a4f1052be Croatia (HR) 509c98fa-41db-4fe7-a9a1-6e014b838ca6 Czech Republic (CZ) a21ed621-d578-4555-ba32-04368b431ba5 Poland (PL) 931e3a3c-12bb-48ef-80d4-ffa401e7d11b Hungary (HU) 56df1229-a648-4e2c-98a7-9328271915d9 Portugal (PT)
Toxic Substances Control Act - TSCA	2CMT2023-006539
WEEE B2C / B2B	Business To Business
WEEE Category	5. Small Equipment (No External Dimension More Than 50 cm)

Certificates and Declarations

Declaration of Conformity - CE	1SAD101100-3411
Declaration of Conformity - UKCA	1SAD201100-3411
UL Certificate	E121190-20000619

Container Information

Package Level 1 Width	80 mm
Package Level 1 Depth / Length	59 mm
Package Level 1 Height	64 mm
Package Level 1 Gross Weight	0.19 kg
Package Level 1 EAN	4013614555725
Package Level 1 Units	box 1 piece

Classifications

Object Classification Code	X
ETIM 5	EC000275 - Rail terminal bar
ETIM 6	EC000275 - Rail terminal bar
ETIM 7	EC000275 - Rail terminal bar
ETIM 8	EC000275 - Rail terminal bar
eClass	V11.0 : 27400603
UNSPSC	39121410
IDEA Granular Category Code (IGCC)	4561 >> Power Blocks & Distribution Blocks

Categories

Low Voltage Products and Systems → Circuit Breakers → Manual Motor Starters

Low Voltage Products and Systems → Control Products → Manual Motor Starters → Manual Motor Starters

