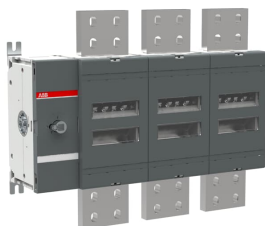




 PRODUCT-DETAILS

OT3200E03

OT3200E03 SWITCH-DISCONNECTOR



General Information

Extended Product Type	OT3200E03
Product ID	1SCA128480R1001
EAN	6417019582665
Catalog Description	OT3200E03 SWITCH-DISCONNECTOR
Long Description	3-pole, front operated, base mounted switch-diconductor, handle and shaft are not included, terminal bolt kit included

Circular Value

Conflict Minerals Reporting Template (CMRT)	9AKK108467A5658
End of Life Instructions	1SCC301124M0201
Environmental Information	1SCC301269D0201
Environmental Product Declaration - EPD	1SCC301308D0201
REACH Declaration	1SCC011021D0201
RoHS Information	1SCC011020D0201

Toxic Substances
Control Act - TSCA

1SCC011025D0201

Eco Transparency

Environmental Product
Declaration - EPD 1SCC301308D0201

Ordering

Minimum Order Quantity 1 piece
Customs Tariff Number 85365080
Country of Origin Finland (FI)

Popular Downloads

Data Sheet, Technical
Information 1SCC301020C0201
Instructions and
Manuals 1SCC301082M0206
Mechanical Drawings OT3200E03
Z14-OT3200E03.dwg
Z14-OT3200E03.dxf
Environmental Product
Declaration - EPD 1SCC301308D0201
End of Life Instructions 1SCC301124M0201

Dimensions

Product Net Width 514 mm
Product Net Height 410 mm
Product Net Depth /
Length 146 mm
Product Net Weight 31.8 kg

Technical

Rated Operational
Current AC-21B (I_e) (380 ... 415 V) 3200 A
Rated Operational
Current AC-22B (I_e) (380 ... 415 V) 3200 A
Conventional Free-air
Thermal Current (I_{th}) $\Theta = 40 \text{ }^\circ\text{C}$ 3200 A
Rated Impulse
Withstand Voltage (U_{imp}) 8 kV
Rated Insulation Voltage
(U_i) acc. to IEC/EN 60664-1 1000 V
Rated Operational
Voltage Main Circuit 1000 V
Rated Short-Circuit
Making Capacity (I_{cm}) (690 V) 176 kA
Rated Short-time
Withstand Current Low
Voltage (I_{cw}) for 1 s 65 kA

Power Loss	at Rated Operating Conditions per Pole 95 W
Pollution Degree	3
Handle Type	Handle and shaft not included
Switches Operating Mechanism	Mechanism at the End of the Switch 03 (Left Side)
Distance Between Phases	Standard
Position of Line Terminals	Top In - Bottom Out Bottom In - Top Out
Operating Mode	Front operated
Standards	IEC 60947-3
Special Functions	No
Mounting Type	Base mounting
Number of Poles	3
Degree of Protection	Front IP00
Terminal Type	Lug terminals
Tightening Torque	acc. IEC 60947-1 50 ... 75 N·m
Mechanical Durability	5000
Lock Type	No

Technical UL/CSA

Tightening Torque	acc. IEC 60947-1 50 ... 75 N·m
-------------------	--------------------------------

Environmental

RoHS Status	Following EU Directive 2011/65/EU and Amendment 2015/863 July 22, 2019
Environmental Information	1SCC301269D0201
Toxic Substances Control Act - TSCA	1SCC011025D0201

Certificates and Declarations

ATEX Certificate	No certification needed
Declaration of Conformity - CE	1SCC301211D2701
DNV GL Certificate	1SCC301184D0203
REACH Declaration	1SCC011021D0201
UL Certificate	No certification needed
VDE Certificate	No certification needed

Container Information

Package Level 1 Units	box 1 piece
Package Level 1 Width	435 mm
Package Level 1 Depth / Length	673 mm
Package Level 1 Height	215 mm
Package Level 1 Gross Weight	34.2 kg
Package Level 1 EAN	6417019582665

Classifications

Object Classification Code	Q
ETIM 7	EC000216 - Switch disconnecter
ETIM 8	EC000216 - Switch disconnecter
ETIM 9	EC000216 - Switch disconnecter (low voltage)
UNSPSC	39122233
IDEA Granular Category Code (IGCC)	5290 >> Disconnect switch
eClass	V11.1 : 27371403
WEEE Category	4. Large Equipment (Any External Dimension More Than 50 cm)

Categories

Low Voltage Products and Systems → Switches → Switch Disconnectors

