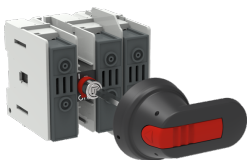




PRODUCT-DETAILS

OS30FAJ12P

OS30FAJ12P FUSIBLE DISCONNECT SWITCH



General Information	
Extended Product Type	OS30FAJ12P
Product ID	1SCA108828R1001
EAN	6417019420998
Catalog Description	OS30FAJ12P FUSIBLE DISCONNECT SWITCH
Long Description	Switch Fuses,Front Operated,3-pole,12 (Between the Poles),Class J,30 A,Handle and shaft included.

Circular Value	
Conflict Minerals Reporting Template (CMRT)	9AKK108467A5658
REACH Declaration	1SCC011021D0201
RoHS Information	1SCC011020D0201
Toxic Substances Control Act - TSCA	1SCC011025D0201

Ordering	
Minimum Order Quantity	1 piece

Customs Tariff Number	85365080
Country of Origin	Lithuania (LT)

Popular Downloads

Data Sheet, Technical Information	1SCC311013C0201
Instructions and Manuals	1SCC311030M0202

Dimensions

Product Net Width	106 mm
Product Net Height	97 mm
Product Net Depth / Length	105 mm
Product Net Weight	0.8 kg

Technical

Rated Operational Current AC-21A (I_e)	(500 V) 30 A (690 V) 30 A
Rated Operational Current AC-22A (I_e)	(500 V) 30 A (690 V) 30 A
Rated Operational Current AC-23A (I_e)	(500 V) 30 A (690 V) 30 A
Rated Operational Power AC-23A (P_e)	(220 ... 240 V) 7.5 kW (400 V) 15 kW (415 V) 15 kW (500 V) 18.5 kW (690 V) 22 kW
Conventional Free-air Thermal Current (I_{th})	$\Theta = 40\text{ }^{\circ}\text{C}$ 32 A
Conventional Thermal Current (I_{the})	Fully Enclosed 32 A
Rated Impulse Withstand Voltage (U_{imp})	12 kV
Rated Insulation Voltage (U_i)	1000 V
Rated Operational Voltage	Main Circuit 690 V AC
Rated Short-time Withstand Current Low Voltage (I_{cw})	for 1 s 1 kiloampere rms
Rated Conditional Short-Circuit Current (I_{nc})	(690 V) 80 kA
Power Loss	at Rated Operating Conditions per Pole 3.5 W
Pollution Degree	3
Handle Type	Pistol handle and shaft included
Switches Operating Mechanism	12 (Between the Poles)
Position of Line Terminals	Top In - Bottom Out, Bottom In - Top Out
Fuse Size	30 A
Fuse System	Class J
Operating Mode	Front Operated
Standards	UL98 IEC 60947-3
Mounting Type	Base mounting
Number of Poles	3
Cable Cross-Section	2.5 ... 25 mm ²
Terminal Type	Screw Terminals
Rated Current (I_n)	Main Circuit 30 A

Technical UL/CSA	
Maximum Operating Voltage UL/CSA	Main Circuit 600 V AC Main Circuit 250 V DC
Ampere Rating	30 A
Horsepower Rating UL/CSA	(acc. to UL 240 V) 7.5 Hp (acc. to UL 480 V) 15 Hp (acc. to UL 600 V) 20 Hp
Tightening Torque UL/CSA	Wire-Clamp 17 in-lb

Environmental	
RoHS Status	Following EU Directive 2011/65/EU and Amendment 2015/863 July 22, 2019
Toxic Substances Control Act - TSCA	1SCC011025D0201

Certificates and Declarations	
Declaration of Conformity - CE	1SCC311129D2702
DNV GL Certificate	1SCC311125D0203
REACH Declaration	1SCC011021D0201

Container Information	
Package Level 1 Units	box 1 piece
Package Level 1 Width	130 mm
Package Level 1 Depth / Length	234 mm
Package Level 1 Height	130 mm
Package Level 1 Gross Weight	0.92 kg
Package Level 1 EAN	6417019420998

Classifications	
Object Classification Code	Q
ETIM 7	EC001040 - Fuse switch disconnecter
ETIM 8	EC001040 - Fuse switch disconnecter
ETIM 9	EC001040 - Fuse switch disconnecter
UNSPSC	39122233
IDEA Granular Category Code (IGCC)	5291 >> Fuse switch disconnecter
eClass	V11.1 : 27371401
WEEE Category	5. Small Equipment (No External Dimension More Than 50 cm)
E-Number (Finland)	3661963

Categories

Low Voltage Products and Systems → Switches → Switch Fuses

