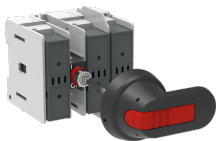




PRODUCT-DETAILS

# OS30FACC12P

## OS30FACC12P FUSIBLE DISCONNECT SWITCH



General Information	
Extended Product Type	OS30FACC12P
Product ID	1SCA108817R1001
EAN	6417019420790
Catalog Description	OS30FACC12P FUSIBLE DISCONNECT SWITCH
Long Description	Switch Fuses,Front Operated,3-pole,12 (Between the Poles),Class CC,30 A,Handle and shaft included,

Circular Value	
Conflict Minerals Reporting Template (CMRT)	9AKK108467A5658
REACH Declaration	1SCC011021D0201
RoHS Information	1SCC011020D0201
Toxic Substances Control Act - TSCA	1SCC011025D0201

<b>Ordering</b>	
Minimum Order Quantity	1 piece
Customs Tariff Number	85365080
Country of Origin	Lithuania (LT)

<b>Popular Downloads</b>	
Data Sheet, Technical Information	1SCC311013C0201
Instructions and Manuals	1SCC311030M0202

<b>Dimensions</b>	
Product Net Width	106 mm
Product Net Height	97 mm
Product Net Depth / Length	105 mm
Product Net Weight	0.63 kg 1.39 lb

<b>Technical</b>	
Rated Operational Current AC-21A (I <sub>e</sub> )	(500 V) 30 A (690 V) 30 A
Rated Operational Current AC-22A (I <sub>e</sub> )	(500 V) 30 A (690 V) 30 A
Rated Operational Current AC-23A (I <sub>e</sub> )	(500 V) 30 A (690 V) 30 A
Rated Operational Power AC-23A (P <sub>e</sub> )	(220 ... 240 V) 7.5 kW (400 V) 15 kW (415 V) 15 kW (500 V) 18.5 kW (690 V) 22 kW
Conventional Free-air Thermal Current (I <sub>th</sub> )	Θ = 40 °C 32 A
Conventional Thermal Current (I <sub>the</sub> )	Fully Enclosed 32 A
Rated Impulse Withstand Voltage (U <sub>imp</sub> )	12 kV
Rated Insulation Voltage (U <sub>i</sub> )	1000 V
Rated Operational Voltage	Main Circuit 690 V AC
Rated Short-time Withstand Current Low Voltage (I <sub>cw</sub> )	for 1 s 1 kiloampere rms
Rated Conditional Short-Circuit Current (I <sub>nc</sub> )	(690 V) 80 kA
Power Loss	at Rated Operating Conditions per Pole 3.5 W
Pollution Degree	3
Handle Type	Pistol handle and shaft included
Switches Operating Mechanism	12 (Between the Poles)
Position of Line Terminals	Top In - Bottom Out, Bottom In - Top Out

Fuse Size	30 A
Fuse System	Class CC
Operating Mode	Front Operated
Standards	UL98 IEC 60947-3
Mounting Type	Base mounting
Number of Poles	3
Cable Cross-Section	2.5 ... 25 mm²
Terminal Type	Screw Terminals
Rated Current (I <sub>n</sub> )	Main Circuit 30 A

Technical UL/CSA

Maximum Operating Voltage UL/CSA	Main Circuit 600 V AC Main Circuit 250 V DC
Ampere Rating	30 A
Horsepower Rating UL/CSA	(acc. to UL 240 V) 7.5 Hp (acc. to UL 480 V) 15 Hp (acc. to UL 600 V) 20 Hp
Tightening Torque UL/CSA	Wire-Clamp 17 in-lb

Environmental

RoHS Status	Following EU Directive 2011/65/EU and Amendment 2015/863 July 22, 2019
Toxic Substances Control Act - TSCA	1SCC011025D0201

Certificates and Declarations

Declaration of Conformity - CE	1SCC311129D2702
DNV GL Certificate	1SCC311125D0203
REACH Declaration	1SCC011021D0201

Container Information

Package Level 1 Units	box 1 piece
Package Level 1 Width	130 mm 5.12 in
Package Level 1 Depth / Length	234 mm 9.21 in
Package Level 1 Height	130 mm 5.12 in
Package Level 1 Gross Weight	0.74 kg 1.63 lb
Package Level 1 EAN	6417019420790

Classifications

Object Classification Code	Q
ETIM 7	EC001040 - Fuse switch disconnecter
ETIM 8	EC001040 - Fuse switch disconnecter

ETIM 9	EC001040 - Fuse switch disconnecter
UNSPSC	39122233
IDEA Granular Category Code (IGCC)	5291 >> Fuse switch disconnecter
eClass	V11.1 : 27371401
WEEE Category	5. Small Equipment (No External Dimension More Than 50 cm)
E-Number (Finland)	3661962

Categories

Low Voltage Products and Systems → Switches → Switch Fuses

