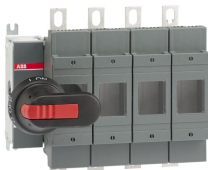




PRODUCT-DETAILS

OS200J04N2P

OS200J04N2P FUSIBLE DISCONNECT SWITCH



General Information	
Extended Product Type	OS200J04N2P
Product ID	1SCA022709R9840
EAN	6417019225913
Catalog Description	OS200J04N2P FUSIBLE DISCONNECT SWITCH
Long Description	Switch Fuses,Front Operated,4-pole,04 (Left Side),Class J,200 A,Handle and shaft included,Switched - With Solid Link

Circular Value	
Conflict Minerals Reporting Template (CMRT)	9AKK108467A5658
Environmental Product Declaration - EPD	1SCC311197D0201
REACH Declaration	1SCC011021D0201
RoHS Information	1SCC011020D0201
Toxic Substances Control Act - TSCA	1SCC011025D0201

Eco Transparency

Environmental Product Declaration - EPD	1SCC311197D0201
---	-----------------

Ordering

Minimum Order Quantity	1 piece
Customs Tariff Number	85365080
Country of Origin	Finland (FI)

Popular Downloads

Data Sheet, Technical Information	1SCC311013C0201
Instructions and Manuals	1SCC311012M0219
Environmental Product Declaration - EPD	1SCC311197D0201

Dimensions

Product Net Width	228 mm
Product Net Height	218 mm
Product Net Depth / Length	132 mm
Product Net Weight	4 kg 8.8 lb

Technical

Rated Operational Current AC-21A (I _e)	(500 V) 200 A (690 V) 200 A
Rated Operational Current AC-22A (I _e)	(380 ... 415 V) 200 A (500 V) 200 A (690 V) 200 A
Rated Operational Current AC-23A (I _e)	(380 ... 415 V) 200 A (500 V) 200 A (690 V) 200 A
Rated Operational Power AC-23A (P _e)	(220 ... 240 V) 60 kW (400 V) 110 kW (415 V) 110 kW (500 V) 132 kW (690 V) 200 kW
Conventional Free-air Thermal Current (I _{th})	Θ = 40 °C 200 A
Conventional Thermal Current (I _{the})	Fully Enclosed 200 A
Rated Impulse Withstand Voltage (U _{imp})	12 kV
Rated Insulation Voltage (U _i)	1000 V
Rated Operational Voltage	Main Circuit 690 V AC
Rated Short-time Withstand Current Low	for 1 s 8 kiloampere rms

Voltage (I _{cw})	
Rated Conditional Short-Circuit Current (I _{nc})	(690 V) 80 kA
Power Loss	at Rated Operating Conditions per Pole 17 W
Pollution Degree	3
Handle Type	Pistol handle and shaft included
Fourth Pole Position	Right Side
Fourth Pole Type	Switched - With Solid Link
Switches Operating Mechanism	04 (Left Side)
Position of Line Terminals	Top In - Bottom Out, Bottom In - Top Out
Fuse Size	200 A
Fuse System	Class J
Operating Mode	Front Operated
Standards	UL98 IEC 60947-3
Mounting Type	Base mounting
Number of Poles	4
Terminal Type	Lug terminals
Terminal Width	20 mm
Tightening Torque	15 ... 22 N·m
Rated Current (I _N)	Main Circuit 200 A

Technical UL/CSA

Ampere Rating	200 A
Horsepower Rating UL/CSA	(acc. to UL 240 V) 60 Hp (acc. to UL 480 V) 125 Hp (acc. to UL 600 V) 150 Hp
Tightening Torque	15 ... 22 N·m
Tightening Torque UL/CSA	Wire-Clamp 275 in·lb Cable Lug 72 in·lb

Environmental

RoHS Status	Following EU Directive 2011/65/EU and Amendment 2015/863 July 22, 2019
Toxic Substances Control Act - TSCA	1SCC011025D0201

Certificates and Declarations

CCC Certificate	CCC OS200-250 2016
Declaration of Conformity - CE	1SCC311091D2704
DNV GL Certificate	1SCC311123D0203
REACH Declaration	1SCC011021D0201

Container Information

Package Level 1 Units	box 1 piece
Package Level 1 Width	230 mm 9.1 in
Package Level 1 Depth / Length	270 mm 10.6 in

Package Level 1 Height	170 mm 6.7 in
Package Level 1 Gross Weight	4.3 kg 9.4 lb
Package Level 1 EAN	6417019225913

Classifications

Object Classification Code	Q
ETIM 7	EC001040 - Fuse switch disconnecter
ETIM 8	EC001040 - Fuse switch disconnecter
ETIM 9	EC001040 - Fuse switch disconnecter
UNSPSC	39122233
IDEA Granular Category Code (IGCC)	5291 >> Fuse switch disconnecter
eClass	V11.1 : 27371401
WEEE Category	5. Small Equipment (No External Dimension More Than 50 cm)

Categories

Low Voltage Products and Systems → Switches → Switch Fuses

