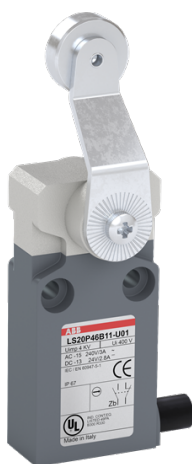




 PRODUCT-DETAILS

LS20P46B11-U01

LS20P46B11-U01 Limit Switch



General Information

Extended Product Type	LS20P46B11-U01
Product ID	1SBV015946R3801
EAN	3471522640918
Catalog Description	LS20P46B11-U01 Limit Switch
Long Description	LS20P46B11-U01 is a 30 mm wide, compact Limit Switch made of fiber-glass reinforced UL-V0 material, with 2 mounting holes at the top, a prewired UL62 - PVC cable (1 m) on the side, bent steel roller lever (Ø18 mm) actuator and 1 N.O + 1 N.C snap action (Zb type) contacts

Ordering

Minimum Order Quantity	1 piece
Customs Tariff Number	85364900

Popular Downloads

Data Sheet, Technical Information	1SBC141160C0201
-----------------------------------	-----------------

Dimensions

Product Net Width	30 mm
Product Net Height	102 mm
Product Net Depth / Length	29 mm
Product Net Weight	0.181 kg

Technical

Action Type of the Contact Element (acc. to IEC 60947-5-1)	Snap Action Simultaneous
Actuator Type	overhead steel roller lever (Ø18 mm)
B10d Value	Operations 20 Millions
Conventional Free-air Thermal Current (I_{th})	acc. to IEC 60947-5-1, $\Theta = 40\text{ °C}$ 10 A
Degree of Protection	acc. to IEC 60529 IP67
Housing Material	Plastic
Maximum Electrical Switching Frequency	(AC-15) 3600 cycles per hour (DC-13) 3600 cycles per hour
Maximum Mounted Auxiliary Contacts	1 NO, 1 NC
Mechanical Durability	10 million
Mounting Type	30 mm
Number and Type of Bottom Cable Glands	Side (Prewired UL/IEC cable)
Rated Impulse Withstand Voltage (U_{imp})	4 kV
Rated Operational Current AC-15 (I_e)	(24 V) 10 A (130 V) 5.5 A (240 V) 3 A
Rated Insulation Voltage (U_i)	acc. to IEC 60947-5-1 and VDE 0110 (Gr. C) 400 V
Rated Operational Current DC-13 (I_e)	(24 V) 2.8 A (125 V) 0.55 A (250 V) 0.27 A

Environmental

Ambient Air Temperature	Operation -25 ... +70 °C Storage -40 ... +70 °C
----------------------------	--

Material Compliance

Conflict Minerals Reporting Template (CMRT)	9AKK108467A5658
REACH Declaration	1SBD251097E1000
RoHS Information	1SBD251097E1000
RoHS Status	Following EU Directive 2002/95/EC August 18, 2005 and amendment
WEEE B2C / B2B	Business To Business

WEEE Category

5. Small Equipment (No External Dimension More Than 50 cm)

Certificates and Declarations

CQC Certificate	CQC2004010305127663
cUL Certificate	9AKK107991A7379
Declaration of Conformity - CCC	2020980305001785
Declaration of Conformity - CE	1SBD250883U1000
Declaration of Conformity - UKCA	1SBD250886U1000

Container Information

Package Level 1 Units	bag 1 piece
Package Level 1 Width	29 mm
Package Level 1 Depth / Length	30 mm
Package Level 1 Height	102 mm
Package Level 1 Gross Weight	0.19 kg
Package Level 1 EAN	3471522640918

Classifications

Object Classification Code	B
ETIM 6	EC000030 - End switch
ETIM 7	EC000030 - End switch
ETIM 8	EC000030 - End switch
eClass	V11.0 : 27272601
UNSPSC	39121500

Categories

Low Voltage Products and Systems → Control Products → Sensors → Limit Switches

