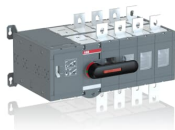




PRODUCT-DETAILS

# OTM800E4CM230C

## OTM800E4CM230C MOTORIZED C/O SWITCH



General Information	
Extended Product Type	OTM800E4CM230C
Product ID	1SCA022872R8340
EAN	6417019339344
Catalog Description	OTM800E4CM230C MOTORIZED C/O SWITCH
Long Description	Including a handle for manual operation, bolt kit with nut and washers for all terminals and male connectors for control circuits. Include a storage clip for the handle and spare fuses.

Circular Value	
Conflict Minerals Reporting Template (CMRT)	9AKK108467A5658
End of Life Instructions	1SCC303059M0201
Environmental Information	1SCC303036D0202
REACH Declaration	1SCC011021D0201
RoHS Information	1SCC011020D0201

Ordering

Minimum Order Quantity	1 piece
Customs Tariff Number	85365080
Country of Origin	Finland (FI)

Popular Downloads

Data Sheet, Technical Information	1SCC303003C0201
Instructions and Manuals	1SCC303002M0206
End of Life Instructions	1SCC303059M0201

Dimensions

Product Net Width	476 mm
Product Net Height	250 mm
Product Net Depth / Length	299 mm
Product Net Weight	25 kg

Technical

Rated Operational Current AC-21A (I <sub>e</sub> )	(380 ... 415 V) 800 A (500 V) 800 A (690 V) 800 A
Rated Operational Current AC-22A (I <sub>e</sub> )	(380 ... 415 V) 800 A (500 V) 800 A (690 V) 800 A
Rated Operational Current AC-23A (I <sub>e</sub> )	(380 ... 415 V) 800 A (500 V) 800 A (690 V) 800 A
Rated Operational Current AC-31B (I <sub>e</sub> )	(380 ... 415 V) 720 A
Rated Operational Current AC-33B (I <sub>e</sub> )	(380 ... 415 V) 650 A
Rated Operational Power AC-23A (P <sub>e</sub> )	(380 ... 415 V) 450 kW (500 V) 560 kW (690 V) 800 kW
Conventional Free-air Thermal Current (I <sub>th</sub> )	Θ = 40 °C 800 A
Conventional Thermal Current (I <sub>the</sub> )	Fully Enclosed 800 A
Rated Impulse Withstand Voltage (U <sub>imp</sub> )	12 kV
Rated Insulation Voltage (U <sub>i</sub> )	1000 V
Rated Operational Voltage	1000 V
Rated Short-time Withstand Current Low Voltage (I <sub>cw</sub> )	for 1 s 20 kiloampere rms
Motor Operational Voltage	220 ... 240 V AC
Power Loss	40 W
Pollution Degree	3

Handle Color	Black
Handle Type	Direct mounted handle
Fourth Pole Position	Right Side
Fourth Pole Type	Switched - Simultaneous Function
Switches Operating Mechanism	Mechanism at the End of the Switch
Distance Between Phases	Standard
Position of Line Terminals	Top In - Bottom Out, Bottom In - Top Out
Operating Mode	Front operated
Mounting Type	Base mounting
Number of Poles	4
Degree of Protection	Front IP20
Transition Type	Open

**Environmental**

RoHS Status	Following EU Directive 2011/65/EU and Amendment 2015/863 July 22, 2019
Environmental Information	1SCC303036D0202

**Certificates and Declarations**

Declaration of Conformity - CE	1SCC303018D0201
REACH Declaration	1SCC011021D0201

**Container Information**

Package Level 1 Units	1 piece
Package Level 1 Width	310 mm
Package Level 1 Depth / Length	560 mm
Package Level 1 Height	330 mm
Package Level 1 Gross Weight	25.19 kg
Package Level 1 EAN	6417019339344

**Classifications**

Object Classification Code	Q
ETIM 7	EC000216 - Switch disconnecter
ETIM 8	EC000216 - Switch disconnecter
ETIM 9	EC000216 - Switch disconnecter (low voltage)
eClass	V11.1 : 27371403
WEEE Category	5. Small Equipment (No External Dimension More Than 50 cm)
E-Number (Finland)	3650303

---

## Categories

---

Low Voltage Products and Systems → Switches → Change-over and Transfer Switches → Motorized Change-over Switches

