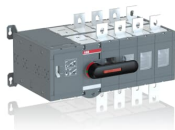




PRODUCT-DETAILS

OTM630E4CM24D

OTM630E4CM24D MOTORIZED C/O SWITCH



| General Information | |
|-----------------------|---|
| Extended Product Type | OTM630E4CM24D |
| Product ID | 1SCA022873R2020 |
| EAN | 6417019339719 |
| Catalog Description | OTM630E4CM24D MOTORIZED C/O SWITCH |
| Long Description | Including a handle for manual operation, bolt kit with nut and washers for all terminals and male connectors for control circuits. Include a storage clip for the handle and spare fuses. |

| Circular Value | |
|---|-----------------|
| Conflict Minerals Reporting Template (CMRT) | 9AKK108467A5658 |
| End of Life Instructions | 1SCC303059M0201 |
| Environmental Information | 1SCC303036D0202 |
| REACH Declaration | 1SCC011021D0201 |
| RoHS Information | 1SCC011020D0201 |

Ordering

| | |
|------------------------|--------------|
| Minimum Order Quantity | 1 piece |
| Customs Tariff Number | 85365080 |
| Country of Origin | Finland (FI) |

Popular Downloads

| | |
|-----------------------------------|-----------------|
| Data Sheet, Technical Information | 1SCC303003C0201 |
| Instructions and Manuals | 1SCC303002M0204 |
| End of Life Instructions | 1SCC303059M0201 |

Dimensions

| | |
|----------------------------|--------|
| Product Net Width | 476 mm |
| Product Net Height | 250 mm |
| Product Net Depth / Length | 299 mm |
| Product Net Weight | 25 kg |

Technical

| | |
|---|--|
| Rated Operational Current AC-21A (I_e) | (380 ... 415 V) 630 A (500 V) 630 A (690 V) 630 A |
| Rated Operational Current AC-22A (I_e) | (380 ... 415 V) 630 A (500 V) 630 A (690 V) 630 A |
| Rated Operational Current AC-23A (I_e) | (380 ... 415 V) 630 A (500 V) 630 A (690 V) 630 A |
| Rated Operational Current AC-31B (I_e) | (380 ... 415 V) 630 A |
| Rated Operational Current AC-33B (I_e) | (380 ... 415 V) 630 A |
| Rated Operational Power AC-23A (P_e) | (380 ... 415 V) 355 kW (500 V) 400 kW (690 V) 630 kW |
| Conventional Free-air Thermal Current (I_{th}) | $\Theta = 40^\circ\text{C}$ 630 A |
| Conventional Thermal Current (I_{the}) | Fully Enclosed 630 A |
| Rated Impulse Withstand Voltage (U_{imp}) | 12 kV |
| Rated Insulation Voltage (U_i) | 1000 V |
| Rated Operational Voltage | 1000 V |
| Rated Short-time Withstand Current Low Voltage (I_{cw}) | for 1 s 20 kiloampere rms |
| Motor Operational Voltage | 24 V DC |
| Power Loss | 25 W |
| Pollution Degree | 3 |

| | |
|------------------------------|--|
| Handle Color | Black |
| Handle Type | Direct mounted handle |
| Fourth Pole Position | Right Side |
| Fourth Pole Type | Switched - Simultaneous Function |
| Switches Operating Mechanism | Mechanism at the End of the Switch |
| Distance Between Phases | Standard |
| Position of Line Terminals | Top In - Bottom Out, Bottom In - Top Out |
| Operating Mode | Front operated |
| Mounting Type | Base mounting |
| Number of Poles | 4 |
| Degree of Protection | Front IP20 |
| Transition Type | Open |

Environmental

| | |
|---------------------------|--|
| RoHS Status | Following EU Directive 2011/65/EU and Amendment 2015/863 July 22, 2019 |
| Environmental Information | 1SCC303036D0202 |

Certificates and Declarations

| | |
|--------------------------------|-----------------|
| Declaration of Conformity - CE | 1SCC303033D0201 |
| REACH Declaration | 1SCC011021D0201 |

Container Information

| | |
|--------------------------------|---------------|
| Package Level 1 Units | 1 piece |
| Package Level 1 Width | 310 mm |
| Package Level 1 Depth / Length | 560 mm |
| Package Level 1 Height | 330 mm |
| Package Level 1 Gross Weight | 25.19 kg |
| Package Level 1 EAN | 6417019339719 |

Classifications

| | |
|----------------------------|--|
| Object Classification Code | Q |
| ETIM 7 | EC000216 - Switch disconnecter |
| ETIM 8 | EC000216 - Switch disconnecter |
| ETIM 9 | EC000216 - Switch disconnecter (low voltage) |
| eClass | V11.1 : 27371403 |
| WEEE Category | 5. Small Equipment (No External Dimension More Than 50 cm) |
| E-Number (Finland) | 3641765 |

Categories

Low Voltage Products and Systems → Switches → Change-over and Transfer Switches → Motorized Change-over Switches

