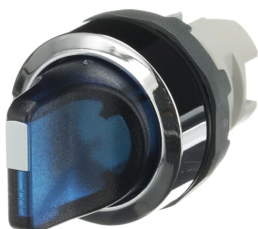




 PRODUCT-DETAILS

M3SS1-31L

M3SS1-31L Selector Switch



General Information

Extended Product Type	M3SS1-31L
Product ID	1SFA611210R3104
EAN	7320500293591
Catalog Description	M3SS1-31L Selector Switch

Long Description	<p>The M3SS1-31L Selector Switch is: 3-position - Momentary - Short handle - Blue - Illuminated - Chrome Metal - No contact block</p> <p>This Selector Switch is part of ABB's modular plastic range, the most versatile range with a high level of flexibility and market-leading electrical ratings. Engineered for total reliability, longer lifetime, and highest mechanical durability. Self-cleaning contacts ensure reliable operation without the need for maintenance, increasing uptime. A high degree of protection guarantees reliability in extreme environments. The innovative design simplifies the entire process, from selection to easy and quick, tool-free installation. The perfect solution for every application.</p>
------------------	---

Ordering

Minimum Order Quantity	10 piece
Customs Tariff Number	8536501999

Popular Downloads

Data Sheet, Technical Information	1SFC151007C02__
Instructions and Manuals	1SFC151011M0201

Dimensions

Product Net Width	0.048 m
Product Net Height	0.03 m
Product Net Depth / Length	0.05 m
Product Net Weight	0.027 kg

Technical

Ambient Air Temperature	Operation -25 ... +70 °C Storage -40 ... +85 °C
Color	Blue
Actuator Type	Short handle
Bezel Material	Chrome Metal
Illumination	Illuminated
Function	Maintained
Sub-Function	3-position
Maintained Positions	A, B, C
Enclosure Type NEMA	Type1 Type12 Type13 Type3R Type4 Type4X
Mechanical Durability	0.5 million

Environmental

Degree of Protection	Front IP66
----------------------	------------

Material Compliance

Conflict Minerals Reporting Template (CMRT)	9AKK108467A5658
REACH Declaration	2CMT2022-006479
RoHS Information	2CMT2022-006498
RoHS Status	Following EU Directive 2011/65/EU and Amendment 2015/863 July 22, 2019
Toxic Substances Control Act - TSCA	2CMT2023-006523
WEEE Category	Product Not in WEEE Scope

Certificates and Declarations

cULus Certificate	9AKK107046A9925
Declaration of	2CMT2015-005452

Conformity - CE	
Declaration of Conformity - UKCA	2CMT2020-006121
DNV GL Certificate	E-14107

Container Information

Package Level 1 Units	bag 1 piece
Package Level 1 Width	0.11 m
Package Level 1 Depth / Length	0.15 m
Package Level 1 Height	0.03 m
Package Level 1 Gross Weight	0.027 kg
Package Level 1 EAN	7320500293591

Classifications

Object Classification Code	S
ETIM 6	EC000222 - Front element for selector switch
ETIM 7	EC000222 - Front element for selector switch
ETIM 8	EC000222 - Front element for selector switch
eClass	V11.0 : 27371213
UNSPSC	39122217
IDEA Granular Category Code (IGCC)	5215 >> Selector Switch Complete Assemblies
E-Number (Sweden)	3716054

Categories

Low Voltage Products and Systems → Control Products → Pilot Devices → Modular Plastic Range → MSS Modular Selector Switches



360°