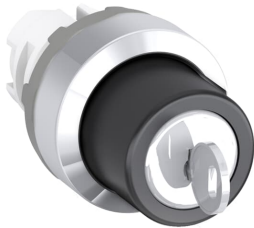




PRODUCT-DETAILS

M2SSK2-303

M2SSK2-303 Selector Switch



General Information	
Extended Product Type	M2SSK2-303
Product ID	1SFA611281R3003
EAN	7320500313862
Catalog Description	M2SSK2-303 Selector Switch
Long Description	<p>The M2SSK2-303 Selector Switch is: 2-position - Maintained - Key - Black/Key - Non-illuminated - Chrome Metal - No contact block</p> <p>This Selector Switch is part of ABB's modular plastic range, the most versatile range with a high level of flexibility and market-leading electrical ratings. Engineered for total reliability, longer lifetime, and highest mechanical durability. Self-cleaning contacts ensure reliable operation without the need for maintenance, increasing uptime. A high degree of protection guarantees reliability in extreme environments. The innovative design simplifies the entire process, from selection to easy and quick, tool-free installation. The perfect solution for every application.</p>

Ordering	
Minimum Order Quantity	10 piece
Customs Tariff Number	8536501999

Popular Downloads	
Data Sheet, Technical Information	1SFC151007C02__
Instructions and Manuals	1SFC151011M0201

Dimensions	
Product Net Width	0.03 m
Product Net Height	0.03 m
Product Net Depth / Length	0.063 m
Product Net Weight	0.054 kg

Technical	
Ambient Air Temperature	Operation -25 ... +70 °C Storage -40 ... +85 °C
Color	Black/Key
Actuator Type	Key
Bezel Material	Chrome Metal
Illumination	Non-illuminated
Function	Maintained
Sub-Function	2-position
Maintained Positions	B, C
Key Removal Positions	Position B Only
Key Code	Ronis 3433-E, Key code 73
Enclosure Type NEMA	Type1 Type12 Type3R Type4 Type4X
Mechanical Durability	0.5 million

Environmental	
Degree of Protection	Front IP66

Material Compliance	
Conflict Minerals Reporting Template (CMRT)	9AKK108467A5658
REACH Declaration	2CMT2022-006479
RoHS Information	2CMT2022-006498
RoHS Status	Following EU Directive 2011/65/EU and Amendment 2015/863 July 22, 2019
Toxic Substances Control Act - TSCA	2CMT2023-006523
WEEE B2C / B2B	Business To Business
WEEE Category	Product Not in WEEE Scope

Certificates and Declarations	
-------------------------------	--

cULus Certificate	9AKK107046A9925
Declaration of Conformity - CE	2CMT2015-005452
Declaration of Conformity - UKCA	2CMT2020-006121
DNV GL Certificate	E-14107

Container Information

Package Level 1 Units	bag 1 piece
Package Level 1 Width	0.11 m
Package Level 1 Depth / Length	0.15 m
Package Level 1 Height	0.03 m
Package Level 1 Gross Weight	0.057 kg
Package Level 1 EAN	7320500313862

Classifications

Object Classification Code	S
ETIM 6	EC000222 - Front element for selector switch
ETIM 7	EC000222 - Front element for selector switch
ETIM 8	EC000222 - Front element for selector switch
eClass	V11.0 : 27371213
UNSPSC	39122217
IDEA Granular Category Code (IGCC)	5215 >> Selector Switch Complete Assemblies

Categories

Low Voltage Products and Systems → Control Products → Pilot Devices → Modular Plastic Range → MSS Modular Selector Switches

