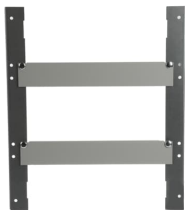




PRODUCT-DETAILS

SR2

SR2 Metallic enclosure SR2



General Information	
Extended Product Type	SR2
Product ID	KD5040K
EAN	8015646736024
Catalog Description	SR2 Metallic enclosure SR2
Long Description	Supports for assembly of DIN panels (14 DIN mod. x 2 rows) 500x400mm (HxW)

Technical	
Suitable For	SR2 Enclosures
Suitable for Product Class	SR2 SR2 EMC
Model Number	Monitor frame
Accessory Type	Frame for DIN rail
Material	Metal
RAL Number	RAL 7035 - Light Grey
Color	Grey

Material Compliance

RoHS Information	9AKK108468A2382
RoHS Status	Following EU Directive 2011/65/EU and Amendment 2015/863 July 22, 2019
RoHS Date	20221015
Conflict Minerals Reporting Template (CMRT)	9AKK108468A3363

Environmental

Environmental Information	1STC804013D0203
---------------------------	-----------------

Dimensions

Product Net Width	400 mm
Product Net Height	500 mm
Product Net Depth / Length	480 mm
Product Net Weight	1.66 kg

Ordering

Package Level 1 Units	box 1 piece
Package Level 1 Gross Weight	1.690 kg

Certificates and Declarations

Declaration of Conformity - CE	9AKK108468A2382
--------------------------------	-----------------

Installation

Instructions and Manuals	1STM6041230001
--------------------------	----------------

Popular Downloads

Data Sheet, Technical Information	1STC804013D0203
-----------------------------------	-----------------

Classifications

ETIM 8	EC002620 - Components for installation (enclosure/cabinet)
ETIM 9	EC002620 - Components for installation (enclosure/cabinet)
WEEE Category	Product Not in WEEE Scope
eClass	V11.0 : 27182811
Object Classification Code	U

Categories

Low Voltage Products and Systems → Enclosures → General Purpose Enclosures → Metal Enclosures → SR2

