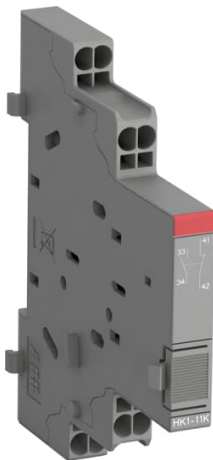




PRODUCT-DETAILS

HK1-11K

HK1-11K Aux.-contact 1 NO + 1 NC with Push-In terminals



General Information

Extended Product Type	HK1-11K
Product ID	1SAM201902R1201
EAN	4013614523311
Catalog Description	HK1-11K Aux.-contact 1 NO + 1 NC with Push-In terminals
Long Description	Auxiliary contacts HK1-K with Push-in Spring terminals change position with the main contacts of the manual motor starter. They are mounted laterally on the right side of manual motor starters MS116, MS132 or MS165. Auxiliary contacts HK1-K are available as normally open or normally closed contacts and provide fast connection by tool-free wiring thanks to the innovative Push-in Spring technology.

Ordering

Minimum Order Quantity	1 piece
Customs Tariff Number	85365080

Popular Downloads

Data Sheet, Technical Information	1SBC100212C0201
Instructions and Manuals	2CDC131120M6801

CAD Dimensional Drawing	2CDC001079B0201
Marketing Video	2CDC131130V0201

Dimensions

Product Net Width	9 mm
Product Net Height	90 mm
Product Net Depth / Length	74.5 mm
Product Net Weight	0.035 kg

Technical

Terminal Type	Push-in Spring Terminals
Rated Operational Voltage	690 V AC 600 V DC
Rated Operational Current AC-15 (I _e)	(24 V) 6 A (240 V) 4 A (690 V) 1 A (380 / 400 V) 3 A
Rated Operational Current DC-13 (I _e)	(24 V) 2 A (125 V) 0.55 A (250 V) 0.27 A (440 V) 0.15 A (600 V) 0.15 A
Rated Impulse Withstand Voltage (U _{imp})	Auxiliary Circuit 6 kV
Rated Insulation Voltage (U _i)	690 V
Degree of Protection	IP20
Electrical Durability	100000 cycle
Mechanical Durability	100000 cycle
Connecting Capacity Auxiliary Circuit	Flexible with Ferrule 1/2x 0.5 ... 2.5 mm² Flexible with Insulated Ferrule 1/2x 0.5 ... 1.5 mm² Flexible 1/2x 0.5 ... 2.5 mm² Rigid 1/2x 0.5 ... 2.5 mm²
Wire Stripping Length	Auxiliary Circuit 10 mm
Recommended Screw Driver	M3
Number of Auxiliary Contacts NO	1
Number of Auxiliary Contacts NC	1
Number of Auxiliary Contacts CO (SPDT)	0
Standards	CSA 22.2 No. 14 IEC/EN 60947-1 IEC/EN 60947-5-1 UL 508 UL 60947-1 UL 60947-5-1
Product Name	Auxiliary Contact
Suitable For	MS116 MS132 MO132 MS165 MO165
Suitable for Product Class	Manual Motor Starter
Accessory Group	Electrical
Accessory Type	Auxiliary Contact

Technical UL/CSA

Maximum Operating Voltage UL/CSA	Main Circuit 600 V AC
Connecting Capacity Auxiliary Circuit UL/CSA	Rigid 1/2x 20-14 AWG Stranded 1/2x 20-14 AWG
Contact Rating UL/CSA	B600 Q600

Environmental

Ambient Air Temperature	Operation -25 ... +60 °C Storage -50 ... +80 °C
Resistance to Shock acc. to IEC 60068-2-27	11 ms Pulse 25g
Resistance to Vibrations	5g 3 ... 150 Hz

Material Compliance

Conflict Minerals Reporting Template (CMRT)	9AKK108467A5658
REACH Declaration	1SAA963005-4502
RoHS Information	1SAA963006-4502
RoHS Status	Following EU Directive 2011/65/EU and Amendment 2015/863 July 22, 2019
Toxic Substances Control Act - TSCA	2CMT2023-006539
WEEE B2C / B2B	Business To Business
WEEE Category	5. Small Equipment (No External Dimension More Than 50 cm)

Certificates and Declarations

ABS Certificate	1SAA963001-0101
CB Certificate	1SAA963004-2002
CQC Certificate	CQC2017010304032778
Declaration of Conformity - CCC	2020980304001252
Declaration of Conformity - CE	1SAD101100-3410
Declaration of Conformity - UKCA	1SAD201100-3410
RINA Certificate	1SAA963002-0802

Container Information

Package Level 1 Width	25 mm
Package Level 1 Depth / Length	80 mm
Package Level 1 Height	93 mm
Package Level 1 Gross Weight	0.08 kg
Package Level 1 EAN	4013614523250
Package Level 1 Units	box 2 piece
Package Level 2 Width	280 mm
Package Level 2 Depth / Length	395 mm
Package Level 2 Height	210 mm
Package Level 2 Gross Weight	6.41 kg
Package Level 2 EAN	4013614523427
Package Level 2 Units	carton 160 piece

Classifications	
Object Classification Code	Q
ETIM 5	EC000041 - Auxiliary contact block
ETIM 6	EC000041 - Auxiliary contact block
ETIM 7	EC000041 - Auxiliary contact block
ETIM 8	EC000041 - Auxiliary contact block
eClass	V11.0 : 27371302
UNSPSC	39121522
IDEA Granular Category Code (IGCC)	4743 >> Auxiliary contact block
E-Number (Finland)	3707824
E-Number (Sweden)	3110465

Categories

Low Voltage Products and Systems → Circuit Breakers → Manual Motor Starters
Low Voltage Products and Systems → Control Products → Manual Motor Starters → Manual Motor Starters

