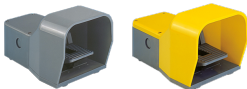




PRODUCT-DETAILS

IPSY2A11

IPSY2A11 Foot Switch



General Information	
Extended Product Type	IPSY2A11
Product ID	1SBV002205R1111
EAN	3471522009708
Catalog Description	IPSY2A11 Foot Switch
Long Description	IPSY2A11 is a Covered Foot Switch with grey base and yellow ABS cover. The pedal movement is maintained and locked in neutral (up) position and the switch is equipped with 1 Pg16 cable entry and 1 N.O + 1 N.C snap action (Za type) contacts.

Ordering	
Minimum Order Quantity	1 piece
Customs Tariff Number	85364900

Popular Downloads	
Data Sheet, Technical Information	1SBC141157C0202
Instructions and	1SBC141157C0202

Manuals

Dimensions	
Product Net Width	140 mm
Product Net Height	138 mm
Product Net Depth / Length	280 mm
Product Net Weight	1.2 kg

Technical	
Action Type of the Contact Element (acc. to IEC 60947-5-1)	Snap action contacts
Actuation Torque	acc. to IEC 60947-5-1 Min. 0.25 N·m
Climatic Withstand	according to IEC 68-2-3 and salty mist according to IEC 68-2-11
Conventional Free-air Thermal Current (I _{th})	acc. to IEC 60947-5-1, $\Theta = 40\text{ °C}$ 10 A
Connecting Capacity	Bar AWG 20 ... AWG 14 mm ² Bar 0.5 ... 2.5 mm ²
Contact Element Form (acc. to IEC 60947-5-1)	Za
Connecting Terminals (delivered in open position)	M3.5 (+,-) screw Phillips head n ^o 1 with captive cable gland
Degree of Protection	acc. to IEC 60529 IP65
Electrical Shock Protection acc. to IEC 536	Double insulation - Class II
Flammability According to UL94	V-0
Mechanical Durability	30 million
Number of Auxiliary Contacts NC	1
Number of Auxiliary Contacts NO	1
Number and Type of Bottom Cable Glands	Pg 16 Cable Gland
Pilot Duty UL/CSA	A600 Q600
Positive Opening Operation of NC Contact (s)	Yes
Rated Impulse Withstand Voltage (U _{imp})	6 kV
Rated Operational Current AC-15 (I _e)	(400 V) NC 4 (24 V) 10 A (130 V) 5.5 A
Rated Frequency (f)	Supply Circuit 50 / 60 Hz
Rated Insulation Voltage (U _i)	acc. to IEC 60947-5-1 and VDE 0110 (Gr. C) 690 V acc. to UL/CSA 600 V
Rated Operational Current DC-13 (I _e)	(24 V) 6 A (110 V) 0.6 / 66 A (125 V) 0.55 A (250 V) 0.4 A
Resistance Between Contacts	25 E45

Short-Circuit Protective Devices	gG Type Fuses 10 A
Terminal Marking	according to EN 50013

Environmental

Ambient Air Temperature	Operation -10 ... +70 °C Storage -25 ... +80 °C
Resistance to Shock acc. to IEC 60068-2-27	Half-sine Pulse for 11 ms, No Change in Contact Position 50 m/s²
Resistance to Vibrations	No Change in Position of Contacts Greater than 100 µs: 25g 10 ... 500 Hz

Material Compliance

Conflict Minerals Reporting Template (CMRT)	9AKK108467A5658
REACH Declaration	1SBD251097E1000
RoHS Information	1SBD251097E1000
RoHS Status	Following EU Directive 2011/65/EU
WEEE B2C / B2B	Business To Business
WEEE Category	5. Small Equipment (No External Dimension More Than 50 cm)

Certificates and Declarations

CQC Certificate	CQC2004010305127663
cUL Certificate	9AKK107991A7379
Declaration of Conformity - CCC	2020980305001785
Declaration of Conformity - CE	1SBD250881U1000
Declaration of Conformity - UKCA	1SBD250885U1000

Container Information

Package Level 1 Units	box 1 piece
Package Level 1 Width	160 mm
Package Level 1 Depth / Length	300 mm
Package Level 1 Height	160 mm
Package Level 1 Gross Weight	1.37 kg
Package Level 1 EAN	3471522009708

Classifications

ETIM 6	EC001258 - Foot switch
ETIM 7	EC001258 - Foot switch
ETIM 8	EC001258 - Foot switch
eClass	V11.1 : 27371218
UNSPSC	39121500
IDEA Granular Category Code (IGCC)	5275 >> Foot switch

Categories

Low Voltage Products and Systems → Control Products → Sensors → Limit Switches

