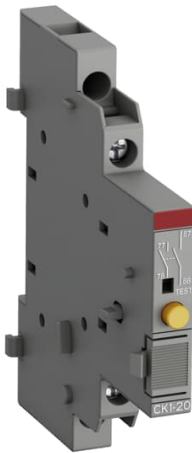




 PRODUCT-DETAILS

CK1-20

CK1-20 Short-Circuit Signaling Contact 2 NO



General Information

Extended Product Type	CK1-20
Product ID	1SAM301901R1002
EAN	4013614403934
Catalog Description	CK1-20 Short-Circuit Signaling Contact 2 NO
Long Description	<p>Signaling contacts CK1 with screw terminals signal the tripping of the manual motor starter in case it was caused by a short-circuit. For CK1 the indication on the device itself is done with a protruding orange button. The contact positions of CK1 need to be manually reset after a tripping event by pushing the orange button. They are attached on the right side of the manual motor starter MS116, MS132 or MS165.</p> <p>Signaling contacts CK1 are available as normally open or normally closed contacts.</p>

Ordering

Minimum Order Quantity	2 piece
Customs Tariff Number	85365080

Popular Downloads

Data Sheet, Technical Information	1SBC100214C0202
Instructions and Manuals	2CDC131027M6802 2CDC131081M6801
Instructions and Manuals (Part 3)	1SBC100214C0202
CAD Dimensional Drawing	2CDC001079B0201

Dimensions

Product Net Width	9 mm
Product Net Height	90 mm
Product Net Depth / Length	78 mm
Product Net Weight	0.035 kg

Technical

Terminal Type	Screw Terminals
Rated Operational Voltage	690 V AC 600 V DC Main Circuit 690 V
Rated Operational Current AC-15 (I_e)	(24 V) 6 A (240 V) 4 A (690 V) 1 A (380 / 400 V) 3 A
Rated Operational Current DC-13 (I_e)	(24 V) 2 A (125 V) 0.55 A (250 V) 0.27 A (440 V) 0.15 A (600 V) 0.15 A
Rated Impulse Withstand Voltage (U_{imp})	Auxiliary Circuit 6 kV
Rated Insulation Voltage (U_i)	690 V
Degree of Protection	IP20
Electrical Durability	10000 cycle
Mechanical Durability	10000 cycle
Connecting Capacity Auxiliary Circuit	Flexible with Ferrule 1/2x 0.75 ... 1.5 mm ² Flexible with Insulated Ferrule 1/2x 0.75 ... 1.5 mm ² Flexible 1/2x 0.75 ... 1.5 mm ² Rigid 1/2x 1 ... 1.5 mm ²
Tightening Torque	Auxiliary Circuit 0.8 ... 1.2 N·m
Wire Stripping Length	Auxiliary Circuit 8 mm
Recommended Screw Driver	M3 Pozidriv 2
Number of Auxiliary Contacts NO	2
Number of Auxiliary Contacts NC	0
Standards	CSA 22.2 No. 14 IEC/EN 60947-1 IEC/EN 60947-5-1 UL 508 UL 60947-1 UL 60947-5-1
Product Name	Short Circuit Signaling Contact
Suitable For	MS132

MS165

Suitable for Product Class	Manual Motor Starter
Accessory Group	Electrical
Accessory Type	Short Circuit Signaling Contact

Technical UL/CSA

Maximum Operating Voltage UL/CSA	Main Circuit 600 V AC
Connecting Capacity Auxiliary Circuit UL/CSA	Flexible 1/2x 16-14 AWG Stranded 1/2x 16-14 AWG
Tightening Torque UL/CSA	Auxiliary Circuit 7 in-lb
Contact Rating UL/CSA	B600 Q600

Environmental

Ambient Air Temperature	Operation -25 ... +60 °C Storage -50 ... +80 °C
Resistance to Shock acc. to IEC 60068-2-27	11 ms Pulse 25g
Resistance to Vibrations	5g 3 ... 150 Hz

Material Compliance

Conflict Minerals Reporting Template (CMRT)	9AKK108467A5658
REACH Declaration	1SAA963005-4502
RoHS Information	1SAA963006-4502
RoHS Status	Following EU Directive 2011/65/EU and Amendment 2015/863 July 22, 2019
Toxic Substances Control Act - TSCA	2CMT2023-006539
WEEE B2C / B2B	Business To Business
WEEE Category	5. Small Equipment (No External Dimension More Than 50 cm)

Certificates and Declarations

ABS Certificate	1SAA963001-0101
BV Certificate	1SAA963002-0201
CB Certificate	1SAA963004-2002
CQC Certificate	CQC2017010304032778
cUL Certificate	cUL_E137861
Declaration of Conformity - CCC	2020980304001252
Declaration of Conformity - CE	1SAD101100-3410
Declaration of Conformity - UKCA	1SAD201100-3410
DNV GL Certificate	1SAA963001-0304
LR Certificate	1SAA963001-0502 1SAA918001-0501
RINA Certificate	1SAA963002-0802

Container Information

Package Level 1 Width	25 mm
Package Level 1 Depth / Length	80 mm
Package Level 1 Height	93 mm
Package Level 1 Gross Weight	0.08 kg
Package Level 1 EAN	4013614481536
Package Level 1 Units	2 piece
Package Level 2 Width	280 mm
Package Level 2 Depth / Length	395 mm
Package Level 2 Height	210 mm
Package Level 2 EAN	4013614526022
Package Level 2 Units	160 piece

Classifications

Object Classification Code	Q
ETIM 4	EC002498 - Accessories for low-voltage switch technology
ETIM 5	EC000041 - Auxiliary contact block
ETIM 6	EC000041 - Auxiliary contact block
ETIM 7	EC000041 - Auxiliary contact block
ETIM 8	EC000041 - Auxiliary contact block
eClass	V11.0 : 27371302
UNSPSC	39121522
IDEA Granular Category Code (IGCC)	4743 >> Auxiliary contact block
E-Number (Finland)	3706161
E-Number (Sweden)	3110146

Categories

Low Voltage Products and Systems → Circuit Breakers → Manual Motor Starters
 Low Voltage Products and Systems → Control Products → Manual Motor Starters → Manual Motor Starters

