

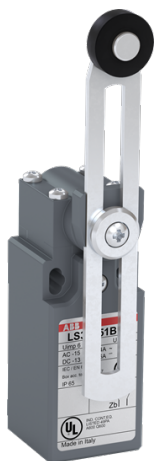



---

 PRODUCT-DETAILS

# LS30P51B11

## LS30P51B11 Limit Switch




---

**General Information**

Extended Product Type	LS30P51B11
Product ID	1SBV010251R1211
EAN	3471522007513
Catalog Description	LS30P51B11 Limit Switch
Long Description	LS30P51B11 is a 30 mm wide, standard Limit Switch made of fiber-glass reinforced UL-V0 material, with 2 mounting holes at the top, 1 Pg13.5 cable entry on the bottom, adjustable plastic roller lever (Ø18 mm) actuator and 1 N.O + 1 N.C snap action (Zb type) contacts

---

**Ordering**

Minimum Order Quantity	10 piece
Customs Tariff Number	85364900

---

**Popular Downloads**

Data Sheet, Technical Information	1SBC141157C0202
-----------------------------------	-----------------

## Dimensions

Product Net Width	30 mm
Product Net Height	98.5 mm
Product Net Depth / Length	45.5 mm
Product Net Weight	0.092 kg

## Technical

Action Type of the Contact Element (acc. to IEC 60947-5-1)	Snap action contacts
Actuation Speed	acc. to IEC 60947-5-1 Max. 1.5 m/s acc. to IEC 60947-5-1 Min. 0 m/s
Actuation Torque	acc. to IEC 60947-5-1 Min. 0.1 N·m
Actuator Type	adjustable Ø 18 mm polyamide roller lever
Angular Head Adjustment	adjustable head every 90°
Angular Lever Adjustment	10° in 10°
B10d Value	Operations 30 Millions
Climatic Withstand	according to IEC 68-2-3 and salty mist according to IEC 68-2-11
Conventional Free-air Thermal Current (I <sub>th</sub> )	acc. to IEC 60947-5-1, Θ = 40 °C 10 A
Connecting Capacity	Bar AWG 20 ... AWG 14 mm <sup>2</sup> Bar 0.5 ... 2.5 mm <sup>2</sup>
Consistency (Measured over 1 Million Operations)	0.1 mm
Contact Element Form (acc. to IEC 60947-5-1)	Zb
Connecting Terminals (delivered in open position)	M3.5 (+,-) pozidriv 2 screw with cable clamp
Degree of Protection	acc. to IEC 60529 IP65
Electrical Shock Protection acc. to IEC 536	Double insulation - Class II
Flammability According to UL94	V-0
Maximum Electrical Switching Frequency	3600 cycles per hour (AC-15) 3600 cycles per hour (DC-13) 3600 cycles per hour
Mechanical Durability	0 cycle
Mounting by Screws (not supplied)	2 x M4 screws
Movement to be Detected	30° Cam Translation Movement
Number of Auxiliary Contacts NC	1
Number of Auxiliary Contacts NO	1
Number and Type of Bottom Cable Glands	Pg 13,5 Cable Gland
Pilot Duty UL/CSA	A600

	Q600
Positive Opening Operation of NC Contact (s)	No
Rated Impulse Withstand Voltage ( $U_{imp}$ )	6 kV
Rated Operational Current AC-15 ( $I_e$ )	(230 V AC) 3.1 A (400 V) NC 4 (24 V) 10 A (130 V) 5.5 A (240 V) 3 A
Rated Frequency (f)	Supply Circuit 50 / 60 Hz
Rated Insulation Voltage ( $U_i$ )	acc. to IEC 60947-5-1 and VDE 0110 (Gr. C) 500 V acc. to UL/CSA 600 V
Rated Operational Current DC-13 ( $I_e$ )	(24 V) 6 A (110 V) 0.6 A (125 V) 0.55 A (250 V) 0.4 A
Resistance Between Contacts	25 E45
Short-Circuit Protective Devices	gG Type Fuses 10 A
Terminal Marking	according to EN 50013

## Environmental

Ambient Air Temperature	Operation -25 ... +70 °C Storage -30 ... +80 °C
Resistance to Shock acc. to IEC 60068-2-27	Half-sine Pulse for 11 ms, No Change in Contact Position 50 m/s <sup>2</sup>
Resistance to Vibrations	No Change in Position of Contacts Greater than 100 $\mu$ s: 25g 10 ... 500 Hz

## Material Compliance

Conflict Minerals Reporting Template (CMRT)	9AKK108467A5658
REACH Declaration	1SBD251097E1000
RoHS Information	1SBD251097E1000
RoHS Status	Following EU Directive 2011/65/EU
WEEE B2C / B2B	Business To Business
WEEE Category	5. Small Equipment (No External Dimension More Than 50 cm)

## Certificates and Declarations

CQC Certificate	CQC2004010305127663
cUL Certificate	9AKK107991A7379
Declaration of Conformity - CCC	2020980305001785
Declaration of Conformity - CE	1SBD250883U1000
Declaration of Conformity - UKCA	1SBD250886U1000

## Container Information

Package Level 1 Units	box 1 piece
Package Level 1 Width	54 mm
Package Level 1 Depth / Length	32 mm
Package Level 1 Height	118 mm
Package Level 1 Gross Weight	0.106 kg
Package Level 1 EAN	3471522007513

---

## Classifications

---

Object Classification Code	B
ETIM 6	EC000030 - End switch
ETIM 7	EC000030 - End switch
ETIM 8	EC000030 - End switch
eClass	V11.1 : 27270601
UNSPSC	39121500

---

## Categories

---

Low Voltage Products and Systems → Control Products → Sensors → Limit Switches

