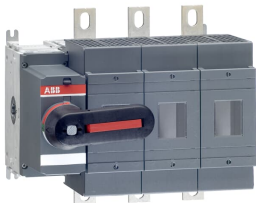




PRODUCT-DETAILS

OS400D03K
OS400D03K SWITCH FUSE



General Information	
Extended Product Type	OS400D03K
Product ID	1SCA022779R5410
EAN	6417019253787
Catalog Description	OS400D03K SWITCH FUSE
Long Description	Switch Fuses,Front Operated,3-pole,03 (Left Side),DIN,0.1,2,Direct mounted handle,

Circular Value	
Conflict Minerals Reporting Template (CMRT)	9AKK108467A5658
Environmental Product Declaration - EPD	1SCC311198D0201
REACH Declaration	1SCC011021D0201
RoHS Information	1SCC011020D0201
Toxic Substances Control Act - TSCA	1SCC011025D0201

Eco Transparency

Environmental Product Declaration - EPD	1SCC311198D0201
---	-----------------

Ordering

Minimum Order Quantity	1 piece
Customs Tariff Number	85365080
Country of Origin	Finland (FI)

Popular Downloads

Data Sheet, Technical Information	1SCC311013C0201
Instructions and Manuals	1SCC311015M0215
Environmental Product Declaration - EPD	1SCC311198D0201

Dimensions

Product Net Width	325 mm
Product Net Height	230 mm
Product Net Depth / Length	236 mm
Product Net Weight	6.61 kg 14.57 lb

Technical

Rated Operational Current AC-21A (I_e)	(500 V) 400 A (690 V) 400 A
Rated Operational Current AC-22A (I_e)	(380 ... 415 V) 400 A (500 V) 400 A (690 V) 400 A
Rated Operational Current AC-23A (I_e)	(380 ... 415 V) 400 A (500 V) 400 A (690 V) 400 A
Rated Operational Power AC-23A (P_e)	(220 ... 240 V) 132 kW (400 V) 220 kW (415 V) 230 kW (500 V) 280 kW (690 V) 400 kW
Conventional Free-air Thermal Current (I_{th})	$\Theta = 40\text{ }^{\circ}\text{C}$ 400 A
Conventional Thermal Current (I_{the})	Fully Enclosed 400 A
Rated Impulse Withstand Voltage (U_{imp})	12 kV
Rated Insulation Voltage (U_i)	1000 V
Rated Operational Voltage	Main Circuit 690 V AC
Rated Short-time Withstand Current Low Voltage (I_{cw})	for 1 s 14 kiloampere rms
Rated Conditional Short-Circuit Current (I_{nc})	(690 V) 80 kA
Power Loss	at Rated Operating Conditions per Pole 45 W
Pollution Degree	3
Handle Type	Direct mounted handle included
Switches Operating Mechanism	03 (Left Side)

Position of Line Terminals	Top In - Bottom Out, Bottom In - Top Out
Fuse Size	NH0 NH1 NH2
Fuse System	DIN
Operating Mode	Front Operated
Standards	IEC 60947-3
Mounting Type	Base mounting
Number of Poles	3
Terminal Type	Lug terminals
Terminal Width	25 mm
Tightening Torque	30 ... 44 N·m
Rated Current (I _n)	Main Circuit 400 A

Technical UL/CSA

Tightening Torque	30 ... 44 N·m
-------------------	---------------

Environmental

RoHS Status	Following EU Directive 2011/65/EU and Amendment 2015/863 July 22, 2019
Toxic Substances Control Act - TSCA	1SCC011025D0201

Certificates and Declarations

CCC Certificate	CCC OS315-400 2016
Declaration of Conformity - CE	1SCC311099D2704
DNV GL Certificate	1SCC311131D0202
REACH Declaration	1SCC011021D0201

Container Information

Package Level 1 Units	box 1 piece
Package Level 1 Width	365 mm 14.37 in
Package Level 1 Depth / Length	360 mm 14.17 in
Package Level 1 Height	175 mm 6.89 in
Package Level 1 Gross Weight	7.634 kg 16.83 lb
Package Level 1 EAN	6417019253787

Classifications

Object Classification Code	Q
ETIM 7	EC001040 - Fuse switch disconnecter
ETIM 8	EC001040 - Fuse switch disconnecter
ETIM 9	EC001040 - Fuse switch disconnecter
UNSPSC	39122233
IDEA Granular Category Code (IGCC)	5291 >> Fuse switch disconnecter
eClass	V11.1 : 27371401
WEEE Category	5. Small Equipment (No External Dimension More Than 50 cm)

Categories

Low Voltage Products and Systems → Switches → Switch Fuses

