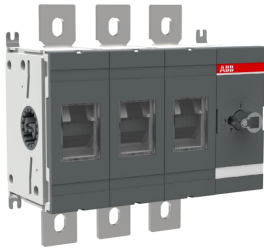




 PRODUCT-DETAILS

OT800E30

OT800E30 SWITCH-DISCONNECTOR



General Information

Extended Product Type	OT800E30
Product ID	1SCA022753R6140
EAN	6417019245218
Catalog Description	OT800E30 SWITCH-DISCONNECTOR
Long Description	3-pole, front operated, base mounted switch-d disconnector, handle and shaft are not included, terminal bolt kit included

Circular Value

Conflict Minerals Reporting Template (CMRT)	9AKK108467A5658
End of Life Instructions	1SCC301119M0201
Environmental Information	1SCC301232D0201
Environmental Product Declaration - EPD	1SCC301284D0201
REACH Declaration	1SCC011021D0201
RoHS Information	1SCC011020D0201
Toxic Substances Control Act - TSCA	1SCC011025D0201

Eco Transparency

Environmental Product Declaration - EPD	1SCC301284D0201
---	-----------------

Ordering

Minimum Order Quantity	1 piece
Customs Tariff Number	85365080
Country of Origin	Finland (FI)

Popular Downloads

Data Sheet, Technical Information	1SCC301020C0201
Instructions and Manuals	1SCC301042M0211
Mechanical Drawings	1SCC301334F0001 1SCC301333F0001 OT600_800E30.iqs
Environmental Product Declaration - EPD	1SCC301284D0201
End of Life Instructions	1SCC301119M0201

Dimensions

Product Net Width	266 mm
Product Net Height	250 mm
Product Net Depth / Length	140 mm
Product Net Weight	6.1 kg

Technical

Rated Operational Current AC-21A (I_e)	(380 ... 415 V) 800 A (500 V) 800 A (690 V) 800 A (1000 V) 800 A
Rated Operational Current AC-22A (I_e)	(380 ... 415 V) 800 A (500 V) 800 A (690 V) 800 A
Rated Operational Current AC-23A (I_e)	(380 ... 415 V) 800 A (500 V) 800 A (690 V) 800 A
Rated Operational Power AC-23A (P_e)	(220 ... 240 V) 250 kW (400 ... 415 V) 450 kW (500 V) 560 kW (690 V) 800 kW
Conventional Free-air Thermal Current (I_{th})	$\Theta = 40 \text{ }^\circ\text{C}$ 800 A
Conventional Thermal Current (I_{the})	Fully Enclosed 800 A
Rated Impulse Withstand Voltage (U_{imp})	12 kV
Rated Insulation Voltage (U_i)	acc. to IEC/EN 60664-1 1000 V
Rated Operational Voltage	Main Circuit 1000 V
Rated Short-Circuit Making Capacity (I_{cm})	(690 V) 80 kA
Rated Short-time Withstand Current Low	for 1 s 20 kA

Voltage (I _{cw})	
Power Loss	at Rated Operating Conditions per Pole 40 W
Pollution Degree	3
Handle Type	Handle and shaft not included
Switches Operating Mechanism	Mechanism at the End of the Switch 30 (Right Side)
Distance Between Phases	Standard
Position of Line Terminals	Top In - Bottom Out Bottom In - Top Out
Operating Mode	Front operated
Standards	IEC 60947-3
Special Functions	No
Mounting Type	Base mounting
Number of Poles	3
Degree of Protection	Front IP00
Terminal Type	Lug terminals
Tightening Torque	acc. IEC 60947-1 50 ... 75 N·m
Mechanical Durability	10000
Lock Type	No

Technical UL/CSA

Tightening Torque	acc. IEC 60947-1 50 ... 75 N·m
-------------------	--------------------------------

Environmental

RoHS Status	Following EU Directive 2011/65/EU and Amendment 2015/863 July 22, 2019
Environmental Information	1SCC301232D0201
Toxic Substances Control Act - TSCA	1SCC011025D0201

Certificates and Declarations

Declaration of Conformity - CE	1SCC301140D2704
DNV GL Certificate	1SCC301184D0203
REACH Declaration	1SCC011021D0201

Container Information

Package Level 1 Units	box 1 piece
Package Level 1 Width	260 mm
Package Level 1 Depth / Length	335 mm
Package Level 1 Height	152 mm
Package Level 1 Gross Weight	6.5 kg
Package Level 1 EAN	6417019245218

Classifications

Object Classification Code	Q
ETIM 7	EC000216 - Switch disconnecter
ETIM 8	EC000216 - Switch disconnecter
ETIM 9	EC000216 - Switch disconnecter (low voltage)
eClass	V11.1 : 27371403

Categories

Low Voltage Products and Systems → Switches → Switch Disconnectors

